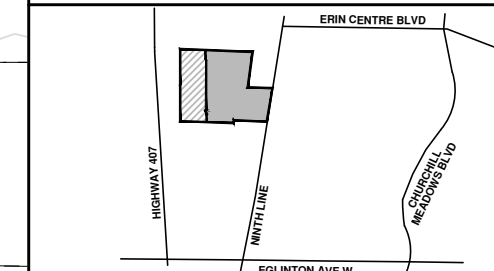


**DRAFT PLAN OF SUBDIVISION  
FILE 21T-**

**5150 Ninth Line**

**PART OF LOT 1,  
CONCESSION 9, NEW SURVEY  
(GEOGRAPHIC TOWNSHIP OF TRAFALGAR)  
CITY OF MISSISSAUGA  
REGIONAL MUNICIPALITY OF PEEL**



**Key Plan  
N.T.S.**

■ Subject Lands  
▨ Additional Lands Owned by Applicant

**OWNER'S AUTHORIZATION**

I HEREBY AUTHORIZE KORSIAK URBAN PLANNING TO PREPARE AND SUBMIT THIS DRAFT PLAN OF SUBDIVISION TO THE CITY OF MISSISSAUGA FOR APPROVAL.

SIGNED  DATE **October 29, 2019**  
Tim Warner

MATTAMY (5150 NINTH LINE) LIMITED  
7880 KEELE STREET, SUITE 900  
VAUGHAN, ON L4K 4G7

**SURVEYOR'S CERTIFICATE**

I HEREBY CERTIFY THAT THE BOUNDARIES OF THE LANDS TO BE SUBDIVIDED AS SHOWN ON THIS PLAN AND THEIR RELATIONSHIP TO ADJACENT LANDS ARE CORRECTLY AND ACCURATELY SHOWN.

SIGNED  DATE **October 29, 2019**  
Sunil Perera, O.L.S. Project Supervisor



**ADDITIONAL INFORMATION (UNDER SECTION 51 (17) OF THE PLANNING ACT)**


- A) SHOWN ON PLAN
- B) SHOWN ON PLAN
- C) SHOWN ON PLAN
- D) SHOWN ON PLAN
- E) SHOWN ON PLAN
- F) SHOWN ON PLAN
- G) SHOWN ON PLAN
- H) MUNICIPAL AND PIPED WATER TO BE PROVIDED
- I) CLAYEY SILT TO SANDY SILT
- J) SHOWN ON PLAN
- K) SANITARY AND STORM SEWERS TO BE PROVIDED
- L) SHOWN ON PLAN

**LAND USE SCHEDULE**

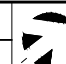
Land Use	Blocks	Block Total	Area (ha)	Units
Townhouses	1-5	5	2.87	119
0.3m Reserve	6	1	0.00	
20.0m ROW (175m)			0.35	
<b>Total</b>	<b>6</b>	<b>6</b>	<b>3.22</b>	<b>119</b>

10/10/19	Original Submission	A	EC
DATE [D.M.Y]	REVISION	DWG	

**NOTES:**  
\* Local/Arterial corner triangle = 5m  
\* Pavement illustration is diagrammatic

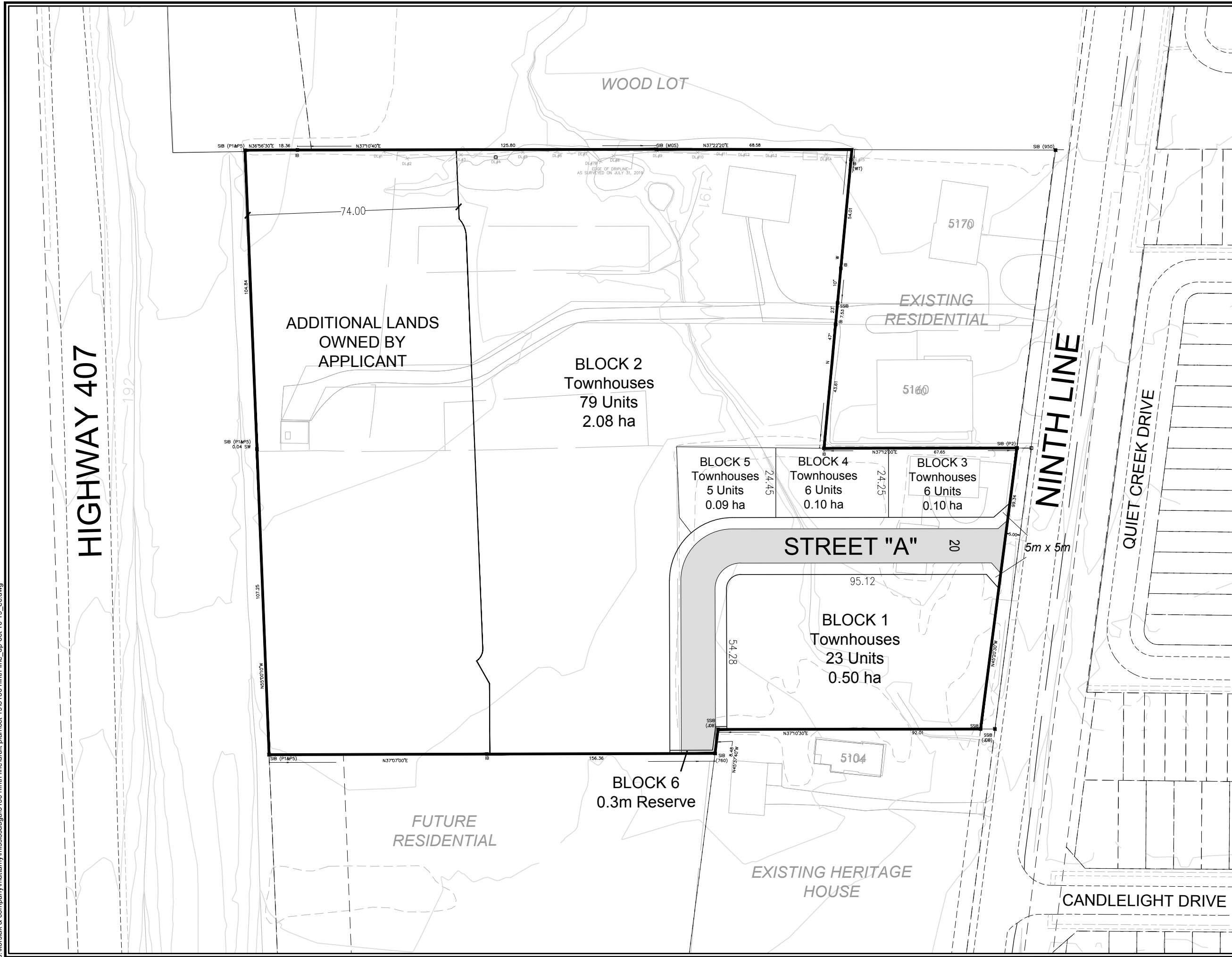


SCALE 1:1250      October 10, 2019

DRAWN BY: EC      CHECKED BY: KC       **A**



206-277 Lakeshore Road East  
Oakville, Ontario L6J 1H9  
T: 905-257-6327  
info@korsiak.com



s:\korsiak & company\mattamy\mississauga\5150\_ninth\_line\draft\_plan\oct\_19\5150\_ninth\_line\_dp-oct-10-19\_ec.dwg