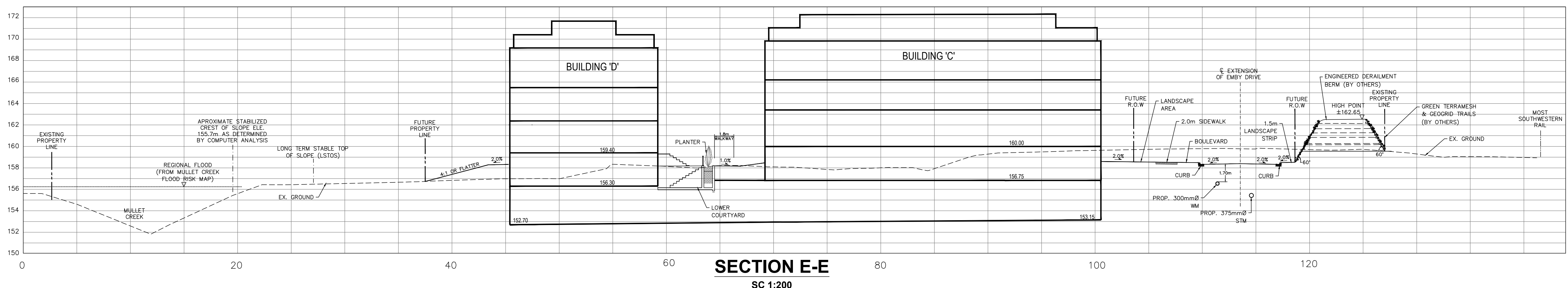
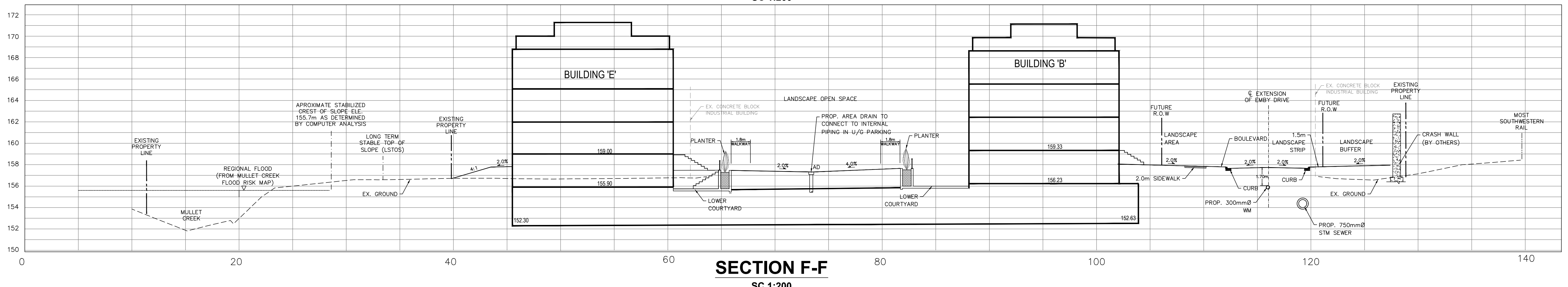


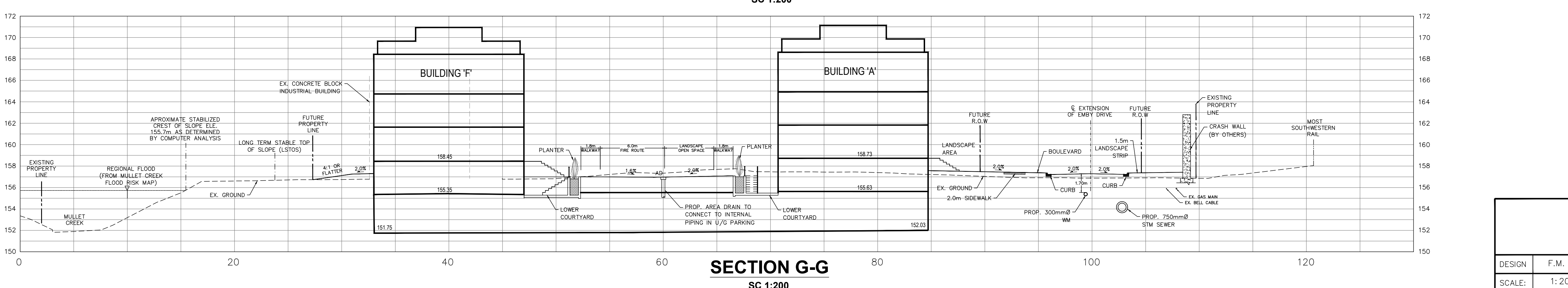
SECTION D-D
SC 1:200



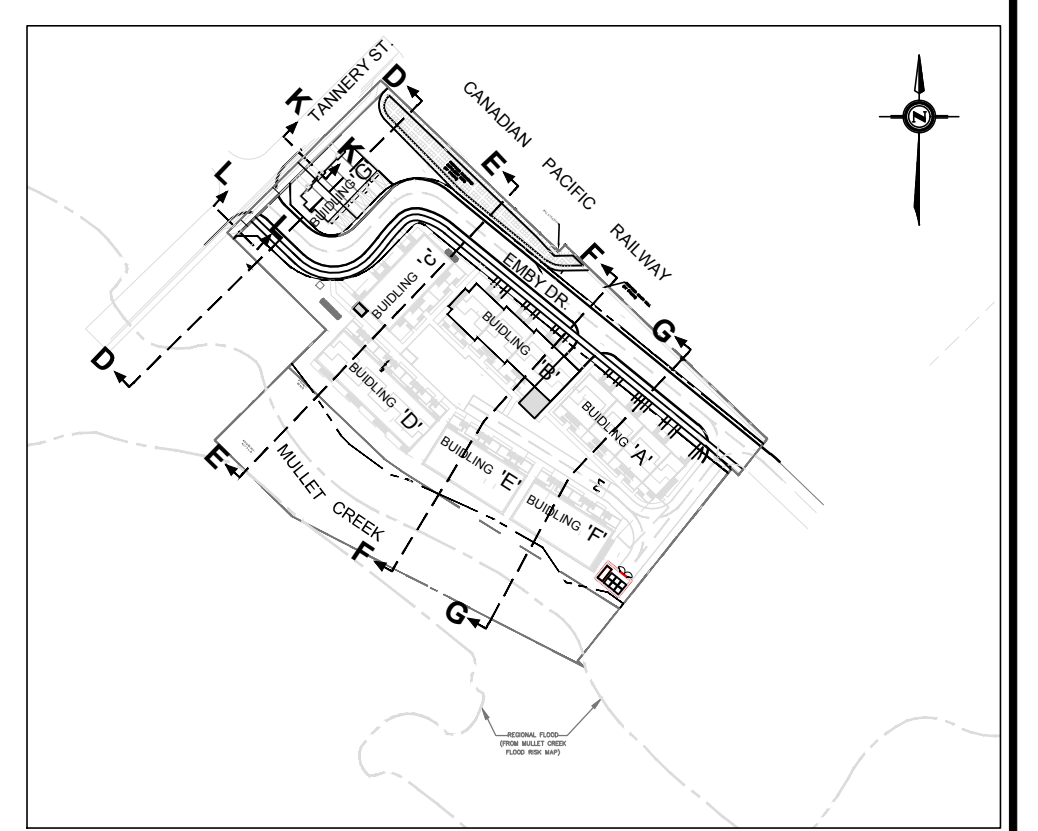
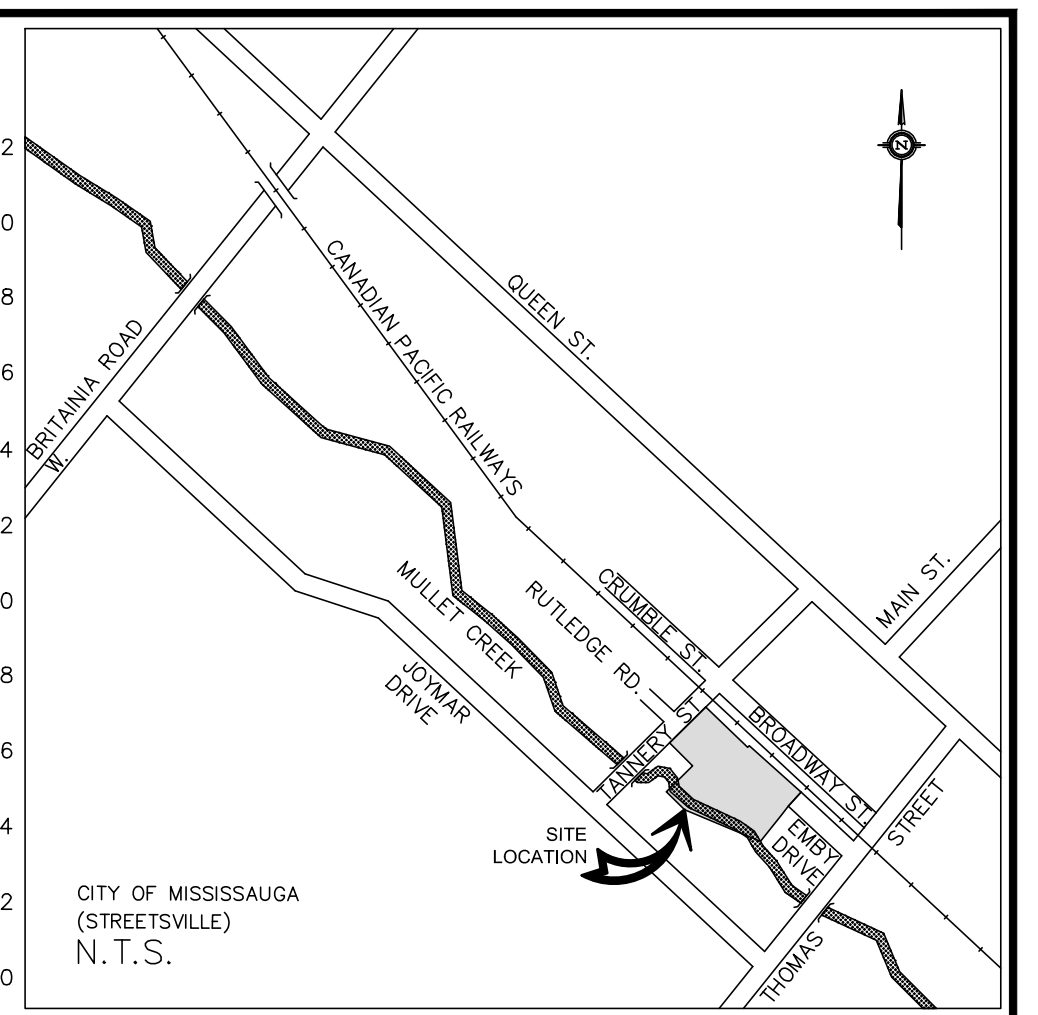
SECTION E-E
SC 1:200



SECTION F-F
SC 1:200



SECTION G-G
SC 1:200



- GENERAL NOTES:**
- REFER TO DWG. C-100 FOR PROPOSED GRADING PLAN.
 - REFER TO DWG. C-101 FOR PROPOSED SEWERS AND WATERMAIN.
 - REFER TO DWG. C-106 FOR PROPOSED BERM AND CRASH WALL CROSS SECTIONS.

CITY OF MISSISSAUGA
REGIONAL MUNICIPALITY OF PEEL

No.	DATE	DESCRIPTION
1	2019/08/27	ISSUED FOR ZBA RESUBMISSION
2	2020/08/07	ISSUED FOR ZBA RESUBMISSION

625 Cochrane Drive, Suite 900
Markham, Ontario
L3R 9S9, Canada
Tel: (905)470-0015 Fax: (905)470-0030

LEA Consulting Ltd.
Consulting Engineers
and Planners
www.LEA.ca

Professional Engineer
F. APPROVED
18020269
AUG. 07
2020

51-57 TANNERY STREET DEVELOPMENT
EAST - WEST CROSS SECTIONS

DESIGN	F.M.	DRAWN	M.N.	CHECKED	R.B.	CONTRACT No.	18038	
SCALE:	1:200 (FULL SIZE)						DRAWING NUMBER	C-103
DATE:	JULY, 2020							

DRAWING NAME: F:\18038\Drawing\Contract Drawings\C-103_103_Cross Sections.dwg Aug 06, 2020 12:55pm