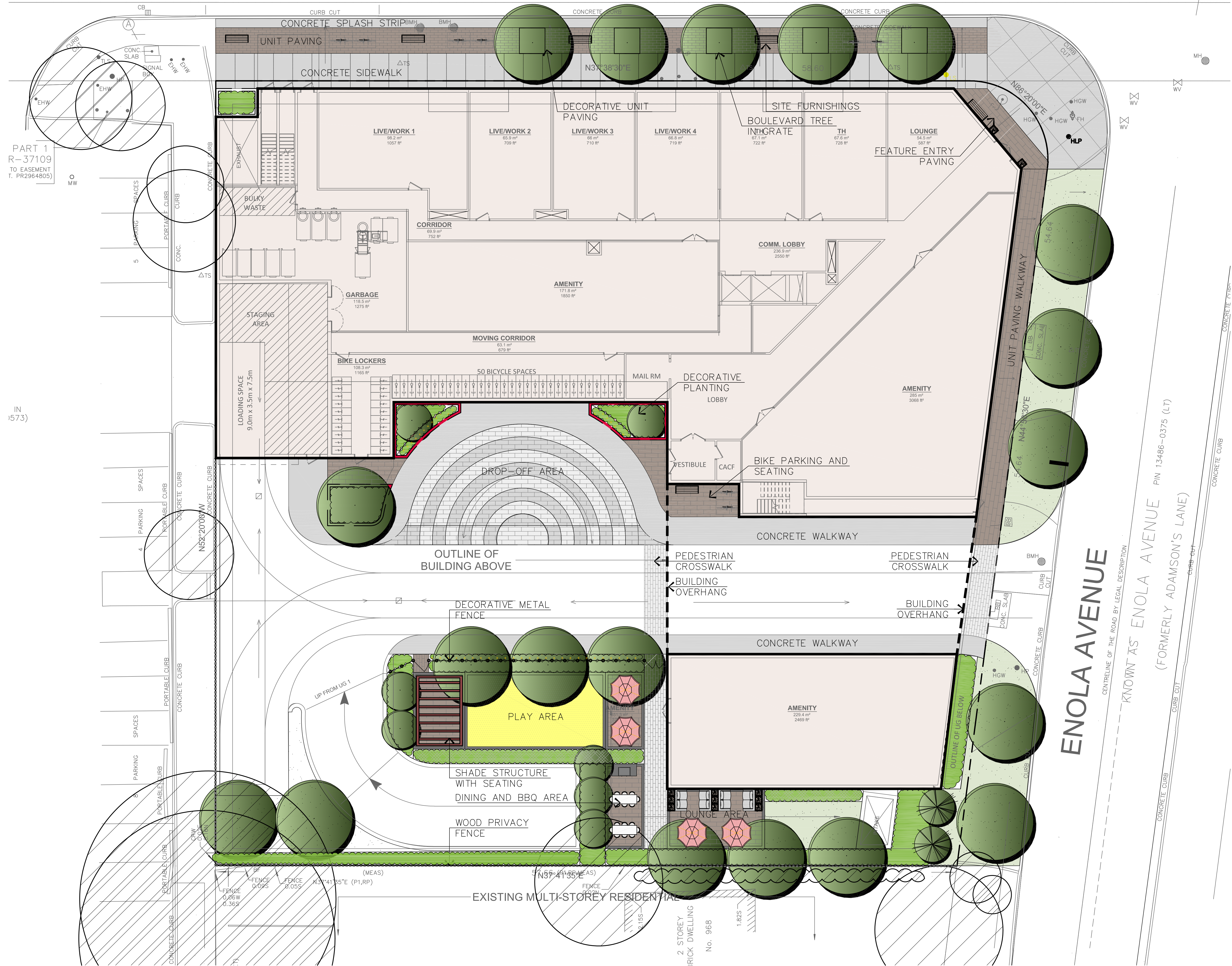


# LAKESHORE ROAD EAST



PART 1  
R-37109  
TO EASEMENT  
T. PR29648053

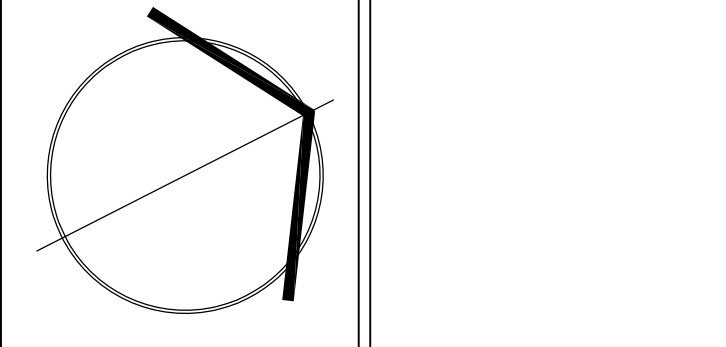
IN  
1573)

- ### GENERAL NOTES
- VERIFY ALL DIMENSIONS.
  - DO NOT SCALE DRAWINGS.
  - REPORT ANY DISCREPANCIES, DISCOVERED ERRORS, OR OMISSIONS TO THE LANDSCAPE ARCHITECT BEFORE PROCEEDING.
  - IT IS ADVISED THAT CONTRACTORS CONTACT THE LANDSCAPE ARCHITECT PRIOR TO CONSTRUCTION TO ENSURE THE USE OF THE LATEST REVISED DRAWINGS.
  - DRAWINGS AND SPECIFICATIONS ARE THE PROPERTY OF THE LANDSCAPE ARCHITECT.

- ### LEGEND
- EXISTING TREES TO BE PRESERVED
  - PROPOSED DECIDUOUS TREE
  - PROPOSED LARGE DECIDUOUS SHRUB
  - DECIDUOUS SHRUBS
  - ORNAMENTAL GRASS AND PERENNIAL PLANTING
  - SODDING
  - DECORATIVE UNIT PAVING
  - CONCRETE SIDEWALK
  - WOOD PRIVACY FENCE
  - DECORATIVE METAL FENCE WITH GATE
  - PRECAST CONCRETE PLANTER WALL
  - BENCH
  - BIKE RING
  - TABLE SEATING
  - UMBRELLA
  - BBQ
  - DECORATIVE PLANTER
  - SHADE STRUCTURE

No.	DATE	REVISION	BY
X	X	X	X

It is the responsibility of the Contractor and/or Owner to ensure that the drawings with the latest revisions are used for construction.



**SBK** 5770 HURONTARIO STREET, SUITE 320  
MISSISSAUGA, ONTARIO, L5R 3G5  
T: 416.695.4949 F: 905.712.3101  
WWW.STRYBOS.COM

**STRYBOS BARRON KING**  
LANDSCAPE ARCHITECTURE

PROJECT:  
**PLAZACORP MIXED-USE DEVELOPMENT**  
420 LAKESHORE RD  
MISSISSAUGA, ON

DRAWING TITLE:  
**Landscape Plan—Ground Floor**

SCALE: 1 : 250	PROJECT No. 20-5470
DATE: MAY 2020	DRAWING No. L100
DRAWN BY: SS	CHECKED BY: SM/AG

2020-06-16  
ISSUED FOR REVIEW

**ENOLA AVENUE**  
CENTRELINE OF THE ROAD BY LEGAL DESCRIPTION  
KNOWN AS ENOLA AVENUE PIN 13486-0375 (LT)  
(FORMERLY ADAMSON'S LANE)

EXISTING MULTI-STOREY RESIDENTIAL

2 STOREY  
BRICK DWELLING  
No. 968