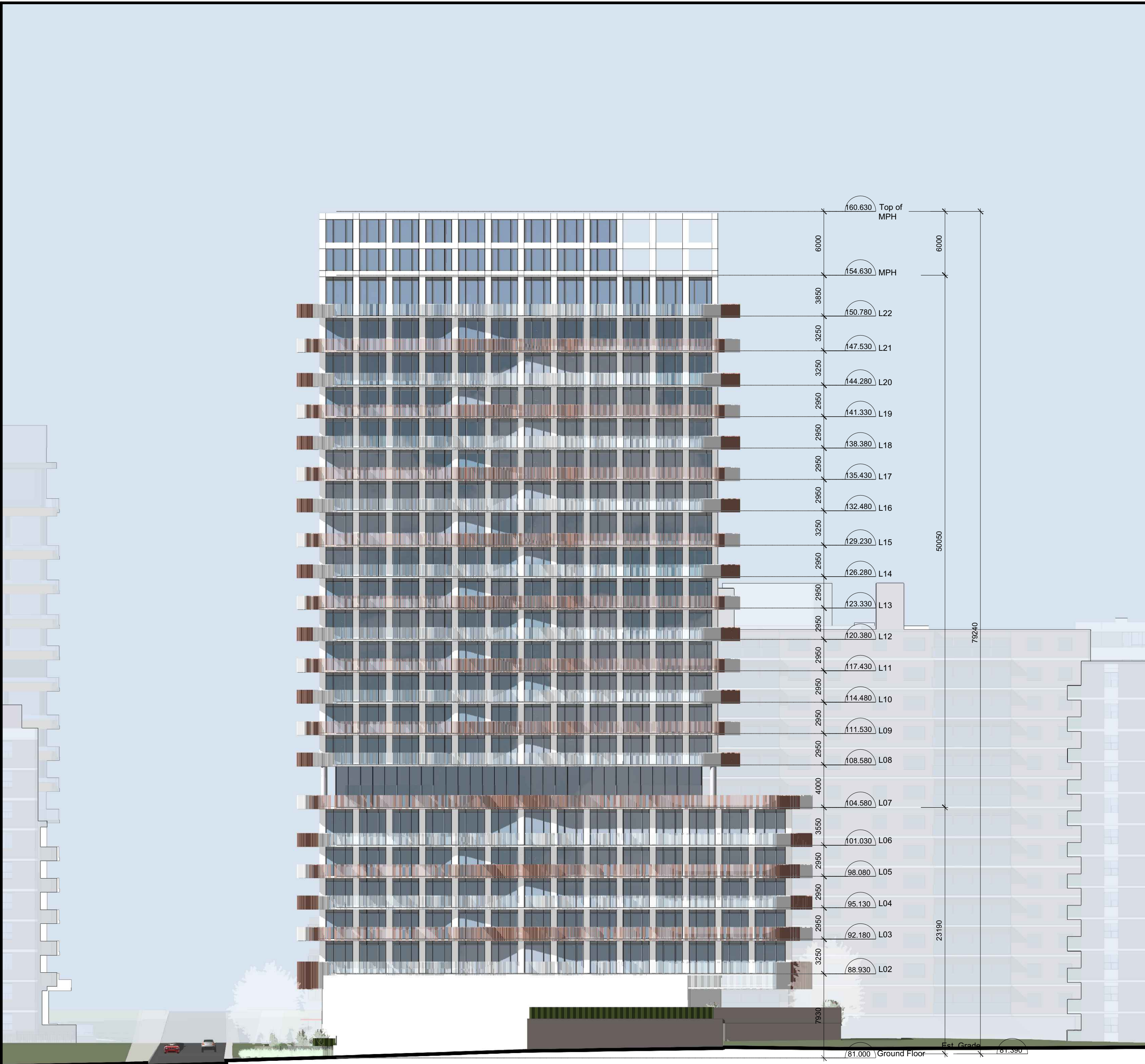


NORTH



EAST

<div>CLIENT</div> <div>EDENSHAW ELIZABETH DEVELOPMENTS LIMITED</div> <div></div> <div>EDENSHAW</div> <div>129 Lakeshore Rd E. Suite 201, 2nd Floor Mississauga, ON</div>	<div>COPYRIGHT</div> <div>This drawing has been prepared solely for the intended use, thus any reproduction or distribution for any purpose other than authorized by IBI Group is forbidden. Written dimensions shall have precedence over scaled dimensions. Contractors shall verify and be responsible for all dimensions and conditions on the job, and IBI Group shall be informed of any variations from the dimensions and conditions shown on the drawing. Shop drawings shall be submitted to IBI Group for general conformance before proceeding with fabrication.</div> <div>is a member of the IBI Group of companies</div>	<div>ISSUES</div> <table><thead><tr><th>No.</th><th>DESCRIPTION</th><th>DATE</th></tr></thead><tbody><tr><td>01</td><td>REZONING SUBMISSION</td><td>2020-05-01</td></tr></tbody></table>	No.	DESCRIPTION	DATE	01	REZONING SUBMISSION	2020-05-01	<div>SEAL</div>	<div>PROJECT</div> <div>42-46 PARK ST. EAST AND 23 ELIZABETH STREET PORT CREDIT, MISSISSAUGA, ONTARIO</div>	<div>PRIME CONSULTANT</div> <div> IBI GROUP ARCHITECTS 7th Floor-55 St. Clair Avenue West Toronto ON M4V 2Y7 Canada tel 416 596 1930 fax 416 596 0644 ibigroup.com</div>
			No.	DESCRIPTION	DATE						
			01	REZONING SUBMISSION	2020-05-01						
			<div>PROJECT NO:</div> <div>121643</div>	<div>SHEET TITLE</div> <div>ELEVATION - NORTH AND EAST</div>							
<div>DRAWN BY:</div> <div>CHECKED BY:</div>	<div>SHEET NUMBER</div> <div>A3.01</div>										
<div>PROJECT MGR:</div> <div>APPROVED BY:</div>	<div>ISSUE</div>										