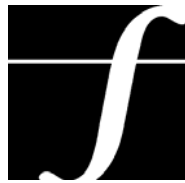


TREE REMOVAL INVENTORY

1840-1850 Bloor Street
Mississauga, Ontario



Ferris + Associates Inc.
Landscape Architecture and Urban Design

July 23, 2019

Arborist Report for Development Applications

Municipal Address of Property:
1840-1850 Bloor Street
Mississauga, Ontario

Section 1 - Arborist Report

Name of Consulting Arborist:

Paul Ferris

T. 416.366.6800

Ferris + Associates Inc. 11 Church Street, Suite 302, Toronto, Ontario M5E 1W1

Date of Inspection: June 17, 2019

Tree No. & Tag No.	Tree Species	DBH (cm) *	Crown Diameter (m)	Plant Condition ** Health & Structure Elements	Observations & Comments	Direction
Subject Site Trees						
1	Basswood <i>Tilia americana</i>	37.5, 44, 47	10	Fair	A 3-stemmed tree located near sidewalk and Enbridge & Hydro corridor; diverging trunk stems with cavities in trunk section; crown with epicormic shoots.	RETAIN
2	Green ash <i>Fraxinus pennsylvanica</i>	28.5		Dead		
3	Green ash <i>Fraxinus pennsylvanica</i>	36	2	Extremely poor	Tree infected by EAB and new growth is developing from epicormic shoots; most of tree is dead.	RETAIN
4	Austrian pine <i>Pinus nigra</i>	39	10	Fair	Trunk with no visible defects; lower crown pruned; thinning crown condition.	RETAIN
5	Austrian pine <i>Pinus nigra</i>	36	8	Poor	Trunk with no visible defects; trunk lean; lower crown pruned; thinning crown condition.	RETAIN
6	Austrian pine <i>Pinus nigra</i>	46	8	Fair	Lower crown pruned; balanced crown form; <5% deadwood present; incipient stage of Diplodia Tip Blight present.	RETAIN
7	Austrian pine <i>Pinus nigra</i>	49	11	Poor	Crooked trunk form; lower crown pruned; thinning crown.	RETAIN
8	Cherry sp. <i>Prunus sp.</i>	35.5	8	Poor	Large white-faced scar on trunk section – possible internal rot; <5% crown mortality; vertical crack present in trunk section; crown pruned; oozing in trunk section.	RETAIN

Tree No. & Tag No.	Tree Species	DBH (cm) *	Crown Diameter (m)	Plant Condition ** Health & Structure Elements	Observations & Comments	Direction
Subject Site Trees						
9	Cherry sp. <i>Prunus sp.</i>	42.5	8	Very poor	Trunk with internal rot; trunk with cracks and oozing formation; crown with deadwood.	RETAIN
10	Austrian pine <i>Pinus nigra</i>	44	13	Fair	Crown thinning; crown vigour conditions declining; lower crown pruned.	RETAIN
11	Austrian pine <i>Pinus nigra</i>	37.5	8	Poor	Short stunted tree; Crown thinning; crown vigour conditions declining; lower crown pruned.	RETAIN
12	Austrian pine <i>Pinus nigra</i>	35	8	Very poor	Crown thinning; crown vigour conditions declining; lower crown pruned.	RETAIN
13	Austrian pine <i>Pinus nigra</i>	46.5	9	Poor	Crown thinning; crown vigour conditions declining; lower crown pruned; poor crown form – competing with adjacent tree.	RETAIN
14	Austrian pine <i>Pinus nigra</i>	56	11	Fair	Trunk with no visible defects; void of most side branches facing adjacent tree – poor crown form.	RETAIN
15	Austrian pine <i>Pinus nigra</i>	49.5	11	Poor to fair	Poor crown form; lower crown pruned; some deadwood present.	RETAIN
16	Black locust <i>Robinia pseudoacacia</i>	24.5, 25.5, 27.5	12	Poor	A 3-stemmed tree with diverging trunk stems; lower crown pruned; low live crown volume; deadwood present; poor crown form.	RETAIN
17	Austrian pine <i>Pinus nigra</i>	43.5	9	Poor	Poor crown form – asymmetrical form competing with adjacent tree; deadwood present.	RETAIN
18	Austrian pine <i>Pinus nigra</i>	39	7	Poor	Poor crown form – asymmetrical form competing with adjacent tree; deadwood present; declining crown vigour.	RETAIN
19	Austrian pine <i>Pinus nigra</i>	47	10	Poor to fair	Trunk splits at 2m into 2 upright stems at approx. 1.45m; poor crown form; sapsucker holes in trunk section; deadwood present.	RETAIN
20	White spruce <i>Picea glauca</i>	25.5	7	Fair	Straight trunk form; surface roots present; lower crown pruned.	RETAIN
21	Austrian pine <i>Pinus nigra</i>	36	9	Poor	Crown volume low; competing tree with adjacent crown; deadwood present; poor crown form.	RETAIN
22	Austrian pine <i>Pinus nigra</i>	56.5	10	Poor to fair	Trunk splits at 1.6m into 2 upright trunk stems; poor crown volume – competing with adjacent tree; deadwood present.	RETAIN
23	Austrian pine <i>Pinus nigra</i>	33.5	8	Poor	Poor crown form (asymmetrical crown form) – competing with adjacent tree; deadwood present.	RETAIN
24	Austrian pine <i>Pinus nigra</i>	33.5	8	Poor	Slight trunk lean; poor form crown (asymmetrical crown form) – competing with adjacent tree; deadwood present.	RETAIN
25	Austrian pine <i>Pinus nigra</i>	40.5	10	Very poor	Stunted tree; poor crown form; crown pruned; declining crown vigour.	RETAIN

Tree No. & Tag No.	Tree Species	DBH (cm) *	Crown Diameter (m)	Plant Condition ** Health & Structure Elements	Observations & Comments	Direction
Subject Site Trees						
26	Austrian pine <i>Pinus nigra</i>	38.5	10	Poor to fair	Short stunted tree form to diameter ratio; tree 1.5m to parking curb; crown pruned; declining vigour.	RETAIN
27	Austrian pine <i>Pinus nigra</i>	44.5	11	Fair	Dense and balanced crown conditions; possible incipient stage of Diplodia tip blight (DTB).	RETAIN
28	Austrian pine <i>Pinus nigra</i>	33.5	6	Poor	Short stunted tree; crown pruned; possible incipient stage of DTB.	RETAIN
29	Thornless honey locust <i>Gleditsia triacanthos</i>	33	8	Fair	A 3-stemmed tree at 2.5m; generally balanced crown form; small amount of <i>deadwood</i> .	RETAIN
30	Thornless honey locust <i>Gleditsia triacanthos</i>	26	6	Poor to fair	Partially suppressed tree – poor crown form (imbalanced); epicormic shoots present.	RETAIN
31	Thornless honey locust <i>Gleditsia triacanthos</i>	37.5	10	Fair	Partially suppressed tree – poor crown form (imbalanced), competing with adjacent tree; epicormic shoots present.	RETAIN
32	Thornless honey locust <i>Gleditsia triacanthos</i>	33.5	9	Poor	Poor formed crown (imbalanced); crown pruned.	RETAIN
33	Thornless honey locust <i>Gleditsia triacanthos</i>	28.5	8	Poor	Poor formed crown; crown pruned to avoid bldg.; epicormic shoots present; white faced scar at trunk base.	RETAIN
34	Thornless honey locust <i>Gleditsia triacanthos</i>	29.5	7	Poor	Trunk splits at 2.5m into 2 upright stems; one stem broken with rot site; poor crown form; crown pruned to avoid building.	RETAIN
35	Thornless honey locust <i>Gleditsia triacanthos</i>	36	9	Poor	Crooked trunk form; poor crown form; crown pruned to avoid building.	RETAIN
36	Thornless honey locust <i>Gleditsia triacanthos</i>	29	9	Poor	Poor crown form; epicormic shoots present; <i>deadwood</i> present.	RETAIN
37	Thornless honey locust <i>Gleditsia triacanthos</i>	24.5	9	Poor	Poor crown form; epicormic shoots present; <i>deadwood</i> present; crown pruned to avoid building.	RETAIN
38	Thornless honey locust <i>Gleditsia triacanthos</i>	27.5	9	Very poor	Poor crown form; epicormic shoots present; <i>deadwood</i> present; crown pruned to avoid building.	RETAIN
39	Thornless honey locust <i>Gleditsia triacanthos</i>	30	9	Poor	Poor crown form; epicormic shoots present; <i>deadwood</i> present; crown pruned to avoid building.	RETAIN

Tree No. & Tag No.	Tree Species	DBH (cm) *	Crown Diameter (m)	Plant Condition ** Health & Structure Elements	Observations & Comments	Direction
Subject Site Trees						
40	Thornless honey locust <i>Gleditsia triacanthos</i>	27	10	Fair to poor	Tree near hydrant; balanced crown form; epicormic shoots present; some <i>deadwood</i> in crown section.	RETAIN
41	Thornless honey locust <i>Gleditsia triacanthos</i>	33.5	10	Fair	Surface roots present; normal foliage colour and size; some <i>deadwood</i> in crown.	RETAIN
42	Thornless honey locust <i>Gleditsia triacanthos</i>	29.5	8	Fair	Balanced crown form; minimal <i>deadwood</i> present; normal foliage colour and size.	RETAIN
43	Thornless honey locust <i>Gleditsia triacanthos</i>	49	14	Fair	Crown pruned; balanced crown form; some <i>deadwood</i> in crown section.	RETAIN
44	Austrian pine <i>Pinus nigra</i>	43.5	11	Poor to fair	Poor crown form – competing with adjacent tree; crown pruned.	RETAIN
45	Austrian pine <i>Pinus nigra</i>	46	10	Poor to fair	Poor crown form – competing with adjacent tree; crown pruned; some <i>deadwood</i> present.	RETAIN
46	Thornless honey locust <i>Gleditsia triacanthos</i>	25.5	10	Poor	Poor crown form – competing with adjacent tree; crown pruned; some <i>deadwood</i> present.	RETAIN
47	Thornless honey locust <i>Gleditsia triacanthos</i>	24.5	8	Poor	Trunk with lean; poor crown form – competing with adjacent tree; crown pruned; some <i>deadwood</i> present.	RETAIN
48	Thornless honey locust <i>Gleditsia triacanthos</i>	30.5	11	Poor to fair	Trunk with lean; poor crown form – competing with adjacent trees; crown pruned; some <i>deadwood</i> present.	RETAIN
49	Thornless honey locust <i>Gleditsia triacanthos</i>	23.5	8	Poor	Trunk with lean; poor crown form – competing with adjacent tree; crown pruned; partially suppressed tree.	RETAIN
50	Colorado spruce <i>Picea pungens</i>	18.5	5	Fair	Tree located near building; balanced crown form.	RETAIN
51	Austrian pine <i>Pinus nigra</i>	43.5	9	Poor	Thinning crown condition; lower crown pruned; DTP present.	RETAIN
52	Austrian pine <i>Pinus nigra</i>	44.5	10	Poor to fair	Thinning crown condition; lower crown pruned; possible DTP present; some <i>deadwood</i> present.	RETAIN
53	Austrian pine <i>Pinus nigra</i>	28	6	Very poor	Tree located near building; crown pruned; thinning crown condition – imbalanced for.	REMOVE (development)
54	Austrian pine <i>Pinus nigra</i>	43.5	8	Poor	Tree near building; thinning crown condition; crown pruned; evidence of possible DTB.	REMOVE (development)
55	Austrian pine <i>Pinus nigra</i>	36	6	Very poor	Thinning crown condition; crown pruned; low live crown volume.	REMOVE (development)
56	Thornless honey locust <i>Gleditsia triacanthos</i>	27.5	11	Poor	Poor crown and trunk forms; crown competing with adjacent tree; some <i>deadwood</i> present.	REMOVE (development)

Tree No. & Tag No.	Tree Species	DBH (cm) *	Crown Diameter (m)	Plant Condition ** Health & Structure Elements	Observations & Comments	Direction
Subject Site Trees						
57	Willow sp. <i>Salix sp.</i>	87.5	19	Poor	Large tree with surface roots; crown pruned; multiple epicormic shoots present; minimal <i>deadwood</i> present; crown damaged during Dec 2013 ice storm event; white faced scar on trunk section.	REMOVE (development)
58	Austrian pine <i>Pinus nigra</i>	45	12	Poor	Trunk with wire embedded mark at approx. 2m; trunk with sweep form; crown pruned.	REMOVE (development)
59	Austrian pine <i>Pinus nigra</i>	39.5	9	Poor to fair	Trunk with no visible defects; some crown <i>deadwood</i> ; evidence of possible DTB.	RETAIN
60	Austrian pine <i>Pinus nigra</i>	33	6	Very poor	Trunk with no visible defects; low live crown volume; some crown <i>deadwood</i> present.	RETAIN
61	Austrian pine <i>Pinus nigra</i>	28.5	5	Very poor	Trunk with no visible defects; low live crown volume; some crown <i>deadwood</i> present.	RETAIN
62	Austrian pine <i>Pinus nigra</i>	31.5	6	Poor	Trunk with no visible defects; low live crown volume; some crown <i>deadwood</i> present.	RETAIN
63	Austrian pine <i>Pinus nigra</i>	32	5	Poor	Trunk with no visible defects; very low live crown volume; some crown <i>deadwood</i> present; crown competing with adjacent tree.	RETAIN
64	Austrian pine <i>Pinus nigra</i>	32	6	Poor	Tree located near path; trunk with no visible defects; very low live crown volume; some crown <i>deadwood</i> present; crown competing with adjacent tree.	RETAIN
65	Austrian pine <i>Pinus nigra</i>	25.5	4	Very poor	Trunk with sweep form and is leaning; very low live crown volume; some <i>deadwood</i> present.	RETAIN
66	Scots pine <i>Pinus sylvestris</i>	25.5	5	Poor	Low crown ratio; crown competing with adjacent tree; some <i>deadwood</i> present; crown pruned.	RETAIN
67	Austrian pine <i>Pinus nigra</i>	33	8	Fair	Trunk with lean; crown competing with adjacent tree resulting in a poor form; crown pruned.	RETAIN
68	Austrian pine <i>Pinus nigra</i>	26.5	6	Poor	Low live crown ratio; some <i>deadwood</i> present; poor form crown – competing with adjacent tree.	RETAIN
69	Austrian pine <i>Pinus nigra</i>	26.5	6	Poor	Tree located at edge of a group of pines resulting in a poor formed crown; some <i>deadwood</i> present.	RETAIN
70	White birch <i>Betula papyrifera</i>	21.5	6	Fair	Trunk splits at 3m into 2 upright stems; surface roots present; normal foliage colour and size; crown pruned.	RETAIN
71	White birch <i>Betula papyrifera</i>	27.5	8	Fair	Trunk with lean; surface roots present; crown pruned; normal foliage colour and size.	RETAIN

Tree No. & Tag No.	Tree Species	DBH (cm) *	Crown Diameter (m)	Plant Condition ** Health & Structure Elements	Observations & Comments	Direction
Subject Site Trees						
72	Thornless honey locust <i>Gleditsia triacanthos</i>	28.5	10	Fair	Crown with a balanced form; some <i>deadwood</i> present; minimal epicormic shoots present.	REMOVE (development)
73	Thornless honey locust <i>Gleditsia triacanthos</i>	27.5	7	Poor	Crooked trunk form; poor crown form – competing with adjacent tree; some <i>deadwood</i> .	REMOVE (development)
74	Thornless honey locust <i>Gleditsia triacanthos</i>	38.5	12	Poor	Crooked trunk form; poor crown form – competing with adjacent tree; some <i>deadwood</i> .	REMOVE (development)
75	White birch <i>Betula papyrifera</i>	25.5	8	Fair	Trunk with lean; normal foliage colour and size; crown pruned.	REMOVE (development)
76	White birch <i>Betula papyrifera</i>	22, 23	11	Fair	Surface roots present; trunk with sweep form; normal foliage colour and size; trunk splits at 0.75m into 2 stems.	RETAIN
77	Thornless honey locust <i>Gleditsia triacanthos</i>	35	11	Fair	Girdling root present; poor form crown – competing with adjacent tree; some <i>deadwood</i> present.	REMOVE (development)
78	White birch <i>Betula papyrifera</i>	26.5	10	Fair	Girdling root present; poor form crown – competing with adjacent tree; some <i>deadwood</i> present.	RETAIN
79	Thornless honey locust <i>Gleditsia triacanthos</i>	38.5	11	Fair	Trunk splits at 2.5m into 2 stems; dense crown condition; minimal <i>deadwood</i> present; crown competing with adjacent tree.	REMOVE (development)
80	Thornless honey locust <i>Gleditsia triacanthos</i>	26.5	9	Poor	Tree crown is suppressed by adjacent tree; poor form crown; some <i>deadwood</i> present.	REMOVE (development)
81	Thornless honey locust <i>Gleditsia triacanthos</i>	30	9	Poor	Tree crown is suppressed by adjacent tree; poor form crown; some <i>deadwood</i> present.	REMOVE (development)
82	Thornless honey locust <i>Gleditsia triacanthos</i>	39	13	Poor to fair	Surface roots present; poor form crown – competing with adjacent tree; epicormic shoots present.	REMOVE (development)
83	Thornless honey locust <i>Gleditsia triacanthos</i>	41	12	Fair	Defined root flare; dense crown form; crown pruned; some <i>deadwood</i> present; epicormic shoots present.	REMOVE (development)
84	Siberian elm <i>Ulmus pumila</i>	40.5	8	Very poor	Trunk with oozing caused by slime flux (bacteria origin); crown is declining in vigour with epicormic shoots and some <i>deadwood</i> ; crown has been pruned.	RETAIN
85	Siberian elm <i>Ulmus pumila</i>	51.5	12	Very poor	Trunk with oozing caused by slime flux (bacteria origin); crown is declining in vigour with epicormic shoots and some <i>deadwood</i> ; crown has been pruned.	RETAIN

Tree No. & Tag No.	Tree Species	DBH (cm) *	Crown Diameter (m)	Plant Condition ** Health & Structure Elements	Observations & Comments	Direction
Subject Site Trees						
86	Siberian elm <i>Ulmus pumila</i>	32.5	9	Very poor	Trunk with oozing caused by slime flux (bacteria origin); crown is declining in vigour with epicormic shoots and some <i>deadwood</i> ; crown has been pruned.	RETAIN
87	Siberian elm <i>Ulmus pumila</i>	43.5	8	Very poor	Trunk with oozing caused by slime flux (bacteria origin); crown is declining in vigour with epicormic shoots and some <i>deadwood</i> ; crown has been pruned.	RETAIN
88	Austrian pine <i>Pinus nigra</i>	40.5	10	Poor	Declining crown vigour; stunted tree condition; trunk with sweep form; crown pruned.	REMOVE (development)
89	Austrian pine <i>Pinus nigra</i>	51	12	Fair	Trunk with 2 upright stems at 3.5m; balanced crown condition; evidence of possible DTB.	REMOVE (development)
90	Austrian pine <i>Pinus nigra</i>	44	8	Fair	Trunk with sweep form; crown pruned with some <i>deadwood</i> present.	REMOVE (development)
91	Austrian pine <i>Pinus nigra</i>	42	10	Poor	Thinning crown condition; crown pruned; crown void of most live branches on SE side.	REMOVE (development)
92	Austrian pine <i>Pinus nigra</i>	47.5	11	Very poor	Trunk with lean; crown pruned; thinning crown condition: evidence of DTB.	REMOVE (development)
93	Austrian pine <i>Pinus nigra</i>	34	9	Fair	Poor formed crown – competing with adjacent tree; evidence of DTB.	RETAIN
94	Austrian pine <i>Pinus nigra</i>	46.5	9	Fair	Crown competing with adjacent tree, somewhat poor crown form; evidence of DTB.	RETAIN
95	Austrian pine <i>Pinus nigra</i>	34.5	9	Poor to fair	Crown competing with adjacent tree; somewhat balanced crown form.	RETAIN
96	Austrian pine <i>Pinus nigra</i>	25	6	Poor	Trunk with sweep form; low live crown volume; crown competing with adjacent tree; evidence of DTB.	RETAIN
97	Austrian pine <i>Pinus nigra</i>	38.5	7	Poor	Crown competing with adjacent tree; crown pruned; some <i>deadwood</i> present; evidence of possible DTB.	RETAIN
98	Austrian pine <i>Pinus nigra</i>	39	6	Fair	Crown competing with adjacent tree; crown pruned; some <i>deadwood</i> present; evidence of possible DTB.	RETAIN
99	Austrian pine <i>Pinus nigra</i>	38.5	9	Fair	Crown competing with adjacent tree; sapsucker holes in trunk section; edge tree with heavy crown growth on outside.	RETAIN
100	Austrian pine <i>Pinus nigra</i>	42	9	Fair	Crown competing with adjacent tree; crown pruned.	REMOVE (development)
101	Austrian pine <i>Pinus nigra</i>	43.5	9	Fair	Crown competing with adjacent tree; crown pruned; early evidence of DTB.	REMOVE (development)

Tree No. & Tag No.	Tree Species	DBH (cm) *	Crown Diameter (m)	Plant Condition ** Health & Structure Elements	Observations & Comments	Direction
Subject Site Trees						
102	Austrian pine <i>Pinus nigra</i>	38.5	9	Poor	Crown competing with adjacent tree; crown pruned; early evidence of DTB; thinning crown condition.	REMOVE (development)
103	Austrian pine <i>Pinus nigra</i>	40	9	Poor to fair	Crown competing with adjacent tree; crown pruned; early evidence of DTB; thinning crown condition.	REMOVE (development)
104	Austrian pine <i>Pinus nigra</i>	38.5	10	Poor to fair	Crown competing with adjacent tree; crown pruned; early evidence of DTB; thinning crown condition.	REMOVE (development)
105	Carolina poplar <i>Populus canadensis</i>	25 est.	6	Fair	Trunk with lean; balanced crown form.	RETAIN
106	Carolina poplar <i>Populus canadensis</i>	30	7	Poor to fair	Trunk with straight form; crown with <i>deadwood</i> present.	RETAIN
107	Carolina poplar <i>Populus canadensis</i>	40	9	Very poor	Major crown dieback, very low live crown volume.	REMOVE (development)
108	Austrian pine <i>Pinus nigra</i>	39	8	Poor	Thinning crown condition; some <i>deadwood</i> present; crown pruned; evidence of DTB.	REMOVE (development)
109	Austrian pine <i>Pinus nigra</i>	35	8	Poor to fair	Thinning crown condition; some <i>deadwood</i> present; crown pruned; evidence of DTB.	REMOVE (development)
110	Austrian pine <i>Pinus nigra</i>	28.5	6	Poor	Trunk with sweep form; thinning crown condition; some <i>deadwood</i> present; crown pruned; evidence of DTB.	REMOVE (development)
111	Austrian pine <i>Pinus nigra</i>	39	9	Poor to fair	Thinning crown condition; some <i>deadwood</i> present; crown pruned; evidence of DTB.	REMOVE (development)
112	Austrian pine <i>Pinus nigra</i>	39	8	Poor	Thinning crown condition; some <i>deadwood</i> present; crown pruned; evidence of DTB.	REMOVE (development)
113	Austrian pine <i>Pinus nigra</i>	38	8	Poor to fair	Crown competing with adjacent tree;	REMOVE (development)
114	Austrian pine <i>Pinus nigra</i>	43.5	8	Poor to fair	Crown competing with adjacent tree; some <i>deadwood</i> present; early DTB present; trunk with lean.	REMOVE (development)
115	Austrian pine <i>Pinus nigra</i>	41.5	8	Poor	Crown competing with adjacent tree; some <i>deadwood</i> present; early DTB present; trunk with sweep form.	REMOVE (development)
116	Austrian pine <i>Pinus nigra</i>	41	9	Poor to fair	Crown competing with adjacent tree; some <i>deadwood</i> present; evidence of DTB; crown pruned.	REMOVE (development)
117	Austrian pine <i>Pinus nigra</i>	35	6	Poor	Crown competing with adjacent tree; some <i>deadwood</i> present; evidence of DTB; crown pruned; very poor crown form.	REMOVE (development)
118	Austrian pine <i>Pinus nigra</i>	44	8	Poor	Crown competing with adjacent tree; some <i>deadwood</i> present; evidence of DTB; crown pruned; very poor crown form.	REMOVE (development)

Tree No. & Tag No.	Tree Species	DBH (cm) *	Crown Diameter (m)	Plant Condition ** Health & Structure Elements	Observations & Comments	Direction
Subject Site Trees						
119	Austrian pine <i>Pinus nigra</i>	49	8	Very poor	Crown competing with adjacent tree; some <i>deadwood</i> present; evidence of DTB; crown pruned; very poor crown form; 2 stems start at 3m diverging trunk stems.	REMOVE (development)
120	Austrian pine <i>Pinus nigra</i>	41	9	Poor	Crown competing with adjacent tree; some <i>deadwood</i> present; evidence of DTB; crown pruned; very poor crown form; trunk with lean.	REMOVE (development)
121	Austrian pine <i>Pinus nigra</i>	32.5	9	Very poor	Crown competing with adjacent tree; some <i>deadwood</i> present; evidence of DTB; crown pruned; very poor crown form.	REMOVE (development)
122	Austrian pine <i>Pinus nigra</i>	42	10	Poor	Crown competing with adjacent tree; some <i>deadwood</i> present; evidence of DTB; crown pruned.	REMOVE (development)
123	Austrian pine <i>Pinus nigra</i>	43	9	Poor to fair	Crown competing with adjacent tree; some <i>deadwood</i> present; evidence of possible DTB; crown pruned.	REMOVE (development)
124	Austrian pine <i>Pinus nigra</i>	44	9	Extremely poor	Very low live crown volume; crown pruned.	REMOVE (development)
125	Austrian pine <i>Pinus nigra</i>	40.5	9	Poor	Balanced crown form; crown pruned; trunk with lean; evidence of DTB.	REMOVE (development)
126	Austrian pine <i>Pinus nigra</i>	36.5	8	Fair	Balanced crown form; crown pruned; trunk with sweep form.	REMOVE (development)
127	Silver maple <i>Acer saccharinum</i>	66	15	Fair	Crown pruned; defined trunk flare; thinning crown condition.	REMOVE (development)
128	Austrian pine <i>Pinus nigra</i>	32	8	Poor	Crown competing with adjacent tree; partially suppressed tree.	REMOVE (development)
129	Austrian pine <i>Pinus nigra</i>	29	6	Poor	Crown competing with adjacent tree; crown pruned; partially suppressed tree.	REMOVE (development)
130	Silver maple <i>Acer saccharinum</i>	22.5, 25, 35	12	Fair	Defined root flare; trunk with no visible defects; generally balanced crown form; minimal <i>deadwood</i> present.	REMOVE (development)
131	Silver maple <i>Acer saccharinum</i>	43	14	Fair	Thinning crown condition; defined trunk flare; minimal <i>deadwood</i> present.	REMOVE (development)
132	Silver maple <i>Acer saccharinum</i>	31.5, 32.5	12	Fair	Thinning crown condition; defined trunk flare; minimal <i>deadwood</i> present.	REMOVE (development)
133	Silver maple <i>Acer saccharinum</i>	34	10	Poor to fair	Poor crown form; minimal <i>deadwood</i> present; thinning crown; defined trunk flare.	REMOVE (development)
134	Silver maple <i>Acer saccharinum</i>	34.5	9	Fair	Stunted tree form; trunk with 2 stems at 3.5m; balanced crown form.	REMOVE (development)
135	Austrian pine <i>Pinus nigra</i>	22.5	5	Very poor	Very low crown volume; trunk with sweep form; thinning crown condition.	REMOVE (development)

Tree No. & Tag No.	Tree Species	DBH (cm) *	Crown Diameter (m)	Plant Condition ** Health & Structure Elements	Observations & Comments	Direction
Subject Site Trees						
136	Austrian pine <i>Pinus nigra</i>	23	5	Very poor	Very low crown volume; trunk with sweep form; thinning crown condition.	REMOVE (development)
137	Silver maple <i>Acer saccharinum</i>	58.5	17	Poor to fair	Surface roots present; thinning crown condition; broken branches maybe as a result of Dec 2013 ice storm.	REMOVE (development)
138	Austrian pine <i>Pinus nigra</i>	47	9	Very poor	Crooked trunk form; crown pruned; very poor crown form – competing with adjacent tree.	REMOVE (development)
139	Silver maple <i>Acer saccharinum</i>	37	10	Fair	Poor crown form – competing with adjacent tree; trunk divides into 2 stems at 2.6m.	REMOVE (development)
140	Austrian pine <i>Pinus nigra</i>	33.5, 34	10	Poor	Poor crown form – competing with adjacent tree; trunk divides into 2 stems at 0.5m; some <i>deadwood</i> present.	REMOVE (development)
141	Silver maple <i>Acer saccharinum</i>	37.5	12	Fair	Crown competing with adjacent tree; minimal crown <i>deadwood</i> present.	REMOVE (development)
142	Silver maple <i>Acer saccharinum</i>	36	9	Fair	Straight trunk form; crown competing with adjacent tree.	REMOVE (development)
143	Austrian pine <i>Pinus nigra</i>	34.5	5	Very poor	Poor crown form – competing with adjacent tree; very low live crown volume; some <i>deadwood</i> present.	REMOVE (development)
144	Silver maple <i>Acer saccharinum</i>	49	13	Fair	Balanced crown condition; surface roots present.	REMOVE (development)
145	Austrian pine <i>Pinus nigra</i>	37	9	Very poor	Crown with terminal leader dead; early stage of DTB.	REMOVE (development)
146	Austrian pine <i>Pinus nigra</i>	45.5	9	Fair	Thinning crown condition; crown pruned; evidence of DTB.	REMOVE (development)
147	Thornless honey locust <i>Gleditsia triacanthos</i>	41.5	11	Fair	Surface roots present; defined trunk flare; crown competing with adjacent tree.	RETAIN
148	Thornless honey locust <i>Gleditsia triacanthos</i>	38.5	9	Poor to fair	Poor form crown - crown competing with adjacent trees; tree located between 2 other locust trees.	RETAIN
149	Thornless honey locust <i>Gleditsia triacanthos</i>	39	11	Poor to fair	Tree located near court and pool area; poor form crown – competing with adjacent tree with an asymmetrical crown form.	RETAIN
150	Austrian pine <i>Pinus nigra</i>	29.5	4	Extremely poor	Very low live crown volume; poor crown form – competing with adjacent tree.	RETAIN
151	Austrian pine <i>Pinus nigra</i>	42.5	9	Poor	Low live crown ratio; poor crown form – competing with adjacent tree; evidence of DTB.	RETAIN
152	Austrian pine <i>Pinus nigra</i>	35.5	8	Poor	Low live crown ratio; poor crown form – competing with adjacent tree; evidence of possible DTB; some <i>deadwood</i> present.	RETAIN
153	Austrian pine <i>Pinus nigra</i>	27.5	6	Poor	Thinning crown condition; early symptoms of DTB; crown pruned.	RETAIN

Tree No. & Tag No.	Tree Species	DBH (cm) *	Crown Diameter (m)	Plant Condition ** Health & Structure Elements	Observations & Comments	Direction
Subject Site Trees						
154	Austrian pine <i>Pinus nigra</i>	30	5	Poor	Low live crown volume; early symptoms of DTB; crown pruned.	RETAIN
155	Austrian pine <i>Pinus nigra</i>	55.5	16	Poor to fair	Poor crown form – competing with adjacent tree; early symptoms of DTB; crown pruned.	RETAIN
156	Austrian pine <i>Pinus nigra</i>	32.5	9	Poor	Poor crown form – competing with adjacent tree; early symptoms of DTB; crown pruned.	RETAIN
157	Austrian pine <i>Pinus nigra</i>	31.5	7	Very poor	Poor crown form – competing with adjacent tree; early symptoms of DTB; crown pruned.	RETAIN
158	Austrian pine <i>Pinus nigra</i>	41	9	Poor to fair	Poor crown form – competing with adjacent tree; early symptoms of DTB; crown pruned.	RETAIN
159	Austrian pine <i>Pinus nigra</i>	34	8	Poor	Poor crown form – competing with adjacent tree; early symptoms of DTB; crown pruned.	RETAIN
160	Thornless honey locust <i>Gleditsia triacanthos</i>	37.5	10	Fair	Defined root flare; crown pruned; some <i>deadwood</i> present.	RETAIN
161	Austrian pine <i>Pinus nigra</i>	33.5	8	Fair	Trunk with no visible defects; crown pruned; balanced crown condition; some <i>deadwood</i> present.	REMOVE (development)
162	Austrian pine <i>Pinus nigra</i>	33	8	Poor	Trunk with sweep form; crown pruned; some <i>deadwood</i> present; early stage of DTB.	REMOVE (development)
163	Austrian pine <i>Pinus nigra</i>	34	9	Poor	Crooked trunk form; crown pruned; some <i>deadwood</i> present; early stage of DTB.	REMOVE (development)
164	Austrian pine <i>Pinus nigra</i>	38	9	Poor	Crooked trunk form; crown pruned; some <i>deadwood</i> present; advanced stage of DTB.	RETAIN
165	Austrian pine <i>Pinus nigra</i>	31	7	Fair	Tree located beside building; balanced crown form; crown pruned.	RETAIN
166	Scots pine <i>Pinus sylvestica</i>	22	6	Poor	Poor crown form; - competing somewhat with adjacent tree; trunk with lean.	RETAIN
167	Scots pine <i>Pinus sylvestica</i>	32.5	7	Very poor	Very poor crown form – competing with adjacent tree; crooked trunk form.	RETAIN
168	Austrian pine <i>Pinus nigra</i>	31.5	8	Poor	Poor crown form – competing with adjacent crown; DTB symptoms present; crown pruned.	RETAIN
169	Austrian pine <i>Pinus nigra</i>	42	9	Poor	Tree located beside building; DTB symptoms; poor crown form – competing with adjacent tree.	RETAIN
170	Austrian pine <i>Pinus nigra</i>	37	9	Very poor	Trunk with sweep form; symptoms of DTB; poor crown form – competing with adjacent tree.	RETAIN
171	Austrian pine <i>Pinus nigra</i>	34.5	8	Poor to fair	Thinning crown condition; crown pruned; some <i>deadwood</i> present.	RETAIN

Tree No. & Tag No.	Tree Species	DBH (cm) *	Crown Diameter (m)	Plant Condition ** Health & Structure Elements	Observations & Comments	Direction
Subject Site Trees						
172	Silver maple <i>Acer saccharinum</i>	44	16	Poor to fair	Surface roots present; thinning crown condition; trunk with no visible defects.	REMOVE (development)
173	Silver maple <i>Acer saccharinum</i>	46.5	16	Poor to fair	Trunk divides at 2.7m into 3 stems; thinning crown condition; broken branches present.	REMOVE (development)
174	Silver maple <i>Acer saccharinum</i>	36	10	Poor to fair	White faced scar at trunk base – possible internal rot; <i>deadwood</i> present in crown with large cut branch at 2m.	REMOVE (development)
175	Silver maple <i>Acer saccharinum</i>	30.5	8	Poor to fair	Thinning crown; crown epicormic shoots; trunk with no visible defects.	REMOVE (development)
176	Silver maple <i>Acer saccharinum</i>	38.5	10	Fair	Trunk with no visible defects; large branch cut at 2.5m.	REMOVE (development)
177	Silver maple <i>Acer saccharinum</i>	28	9	Poor to fair	Thinning crown condition; trunk divides at 2.4m into 2 stems.	REMOVE (development)
178	Silver maple <i>Acer saccharinum</i>	38	9	Poor	Crooked trunk form; large branch cut at 2.2m; large scaffold branch located at 2m.	REMOVE (development)
179	Silver maple <i>Acer saccharinum</i>	47	16	Fair	Surface roots present; trunk divides at 3m into 2 stems; balanced crown condition.	REMOVE (development)
180	Silver maple <i>Acer saccharinum</i>	32.5	9	Poor	Trunk with basal scar; crown prune; crown competing with adjacent tree; epicormic shoots present.	REMOVE (development)
181	Silver maple <i>Acer saccharinum</i>	43	15	Fair	Surface roots present; balanced crown form; some <i>deadwood</i> present; trunk divides at 2.5m into 2 stems	REMOVE (development)
182	Thornless honey locust <i>Gleditsia triacanthos</i>	29	9	Poor	Poor crown form – competing with adjacent tree; epicormic shoots present; balanced crown form.	REMOVE (development)
183	Thornless honey locust <i>Gleditsia triacanthos</i>	23	8	Fair	Trunk with no visible defects; balanced crown form.	REMOVE (development)
184	Thornless honey locust <i>Gleditsia triacanthos</i>	30.5	12	Poor to fair	Low live crown volume; thinning crown condition.	REMOVE (development)
185	Thornless honey locust <i>Gleditsia triacanthos</i>	48.5	17	Fair	Balanced crown condition; some <i>deadwood</i> present; surface roots present.	REMOVE (development)
186	Austrian pine <i>Pinus nigra</i>	44	9	Poor to fair	Poor crown form – competing with adjacent tree; no apparent symptoms of DTB; bird house on trunk at 3.	REMOVE (development)
187	Austrian pine <i>Pinus nigra</i>	33.5	8	Poor	Poor crown form – competing with adjacent tree; some <i>deadwood</i> present.	REMOVE (development)

Tree No. & Tag No.	Tree Species	DBH (cm) *	Crown Diameter (m)	Plant Condition ** Health & Structure Elements	Observations & Comments	Direction
Subject Site Trees						
188	Austrian pine <i>Pinus nigra</i>	41	8	Poor to fair	Poor crown form – competing with adjacent tree; some <i>deadwood</i> present	REMOVE (development)
189	Austrian pine <i>Pinus nigra</i>	42	8	Poor to fair	Poor crown form – competing with adjacent tree; some <i>deadwood</i> present; crown pruned.	REMOVE (development)
190	Austrian pine <i>Pinus nigra</i>	48.5	9	Poor to fair	Poor crown form – competing with adjacent tree; some <i>deadwood</i> present; crown pruned; trunk divides at 2.6m into 2 stems; early stage of DTB.	REMOVE (development)
191	Silver maple <i>Acer saccharinum</i>	43.5	10	Fair	Poor crown form – competing with adjacent tree; thinning crown; crown pruned; surface roots present.	RETAIN
192	Silver maple <i>Acer saccharinum</i>	52	15	Fair	Balanced crown condition; trunk divides into 4 stems at 3m with strong union branch attachments.	REMOVE (development)
193	Silver maple <i>Acer saccharinum</i>	14, 18, 25.5	15	Fair	Poor crown form – competing with adjacent tree with an imbalanced form.	REMOVE (development)
194	Silver maple <i>Acer saccharinum</i>	35.5, 36, 40.5	10	Fair	Surface roots present; some <i>deadwood</i> present; balanced crown condition.	RETAIN
195	Austrian pine <i>Pinus nigra</i>	47.5	8	Poor	Crooked trunk form; poor crown form – competing with adjacent tree; some <i>deadwood</i> present.	REMOVE (development)
196	Austrian pine <i>Pinus nigra</i>	43.5	9	Poor	Crooked trunk form; poor crown form – competing with adjacent tree; some <i>deadwood</i> present; some symptoms of DTB.	REMOVE (development)
197	Austrian pine <i>Pinus nigra</i>	43	9	Poor	Straight trunk form; Crooked trunk form; poor crown form – competing with adjacent tree; some <i>deadwood</i> present; evidence of DTB.	REMOVE (development)
198	Carolina poplar <i>Populus x canadensis</i>	17, 13.5, 18, 36	9	Poor to fair	Trunk straight with no visible defects; some <i>deadwood</i> present; surface roots present.	RETAIN
199	Austrian pine <i>Pinus nigra</i>	40, 45 est.	12	Poor	Poor crown form – competing with adjacent tree; early symptoms of DTB.	REMOVE (development)
200	Austrian pine <i>Pinus nigra</i>	43.5	10	Poor	Large scaffold branch at 3.5m; poor crown form – competing with adjacent tree; symptoms of DTB.	REMOVE (development)
201	Austrian pine <i>Pinus nigra</i>	47	9	Poor to fair	Thinning crown condition; symptoms of DTB; trunk with no visible defects; poor crown form – competing with adjacent tree.	REMOVE (development)
202	Austrian pine <i>Pinus nigra</i>	46.5	10	Poor to fair	Thinning crown condition; symptoms of DTB; trunk with no visible defects; poor crown form – competing with adjacent tree.	RETAIN

Tree No. & Tag No.	Tree Species	DBH (cm) *	Crown Diameter (m)	Plant Condition ** Health & Structure Elements	Observations & Comments	Direction
Subject Site Trees						
203	Austrian pine <i>Pinus nigra</i>	35.5	9	Poor	Thinning crown condition; symptoms of DTB; trunk with no visible defects; poor crown form – competing with adjacent tree.	RETAIN
204	Norway maple <i>Acer platanoides</i>	28, 30.5	8	Fair	Trunk divides at into 2 stems below 1.4m; generally balanced crown form.	RETAIN
205	Cherry sp. <i>Prunus sp.</i>	29.5	8	Fair	Lower branches of crown dead; balanced crown condition.	RETAIN
206	Austrian pine <i>Pinus nigra</i>	34	7	Poor to fair	Trunk with sweep form; crown competing with adjacent tree; thinning crown.	REMOVE (development)
207	Austrian pine <i>Pinus nigra</i>	47	13	Fair	Straight trunk form; balanced crown condition.	RETAIN
208	Austrian pine <i>Pinus nigra</i>	44	8	Fair	Straight trunk form; balanced crown condition; somewhat competing with adjacent tree.	REMOVE (development)
209	Austrian pine <i>Pinus nigra</i>	40.5	9	Fair	Straight trunk form; balanced crown condition; somewhat competing with adjacent tree; early stage of DTB.	REMOVE (development)
210	Austrian pine <i>Pinus nigra</i>	44.5	11	Fair	Straight trunk form; balanced crown condition; somewhat competing with adjacent tree; early stage of DTB.	REMOVE (development)
211	Austrian pine <i>Pinus nigra</i>	30	10	Fair	Straight trunk form; balanced crown condition; somewhat competing with adjacent tree.	REMOVE (development)
212	Austrian pine <i>Pinus nigra</i>	39	8	Poor to fair	Poor crown form – competing with adjacent tree; symptoms of DTB present.	REMOVE (development)
213	Silver maple <i>Acer saccharinum</i> Silver maple	83	16	fair	Trunk divides into multiple stems at 2 to 3m; some <i>deadwood</i> present; generally balanced crown condition.	REMOVE (development)
214	Austrian pine <i>Pinus nigra</i>	37.5	8	Poor to fair	Crown somewhat imbalanced due to competing crowns with adjacent tree; some <i>deadwood</i> present; declining crown vigour.	REMOVE (development)
215	Austrian pine <i>Pinus nigra</i>	49	9	fair	Crown somewhat imbalanced due to competing crowns with adjacent tree; incipient stage DTB.	REMOVE (development)
216	Silver maple <i>Acer saccharinum</i>	19.5, 27.5, 30.5	12	Fair	Surface roots present; large spreading tree with 3 stems originating below 1.4m; generally balanced crown condition.	REMOVE (development)
217	Silver maple <i>Acer saccharinum</i>	56.5	11	Fair	Trunk divides at 2.5m into multiple stems; generally balanced crown; surface roots present.	REMOVE (development)
218	Silver maple <i>Acer saccharinum</i>	44	12	Fair	Trunk with no major observable defects; generally balanced crown condition; few broken branches present.	REMOVE (development)

Tree No. & Tag No.	Tree Species	DBH (cm) *	Crown Diameter (m)	Plant Condition ** Health & Structure Elements	Observations & Comments	Direction
Subject Site Trees						
219	Silver maple <i>Acer saccharinum</i>	20.5, 47	10	Fair	Surface roots present; trunk with no major observable defects; generally balanced crown condition; few broken branches present.	REMOVE (development)
220	Austrian pine <i>Pinus nigra</i>	33	7	Poor	Poor crown form – competing with adjacent tree; some <i>deadwood</i> present.	REMOVE (development)
221	Austrian pine <i>Pinus nigra</i>	39.5	8	Poor	Poor crown form – competing with adjacent tree; some <i>deadwood</i> present; symptoms of DTB present.	REMOVE (development)
222	Austrian pine <i>Pinus nigra</i>	40.5	8	Poor	Poor crown form – competing with adjacent tree; some <i>deadwood</i> present; symptoms of DTB present.	REMOVE (development)
223	Austrian pine <i>Pinus nigra</i>	40.5	6	Very poor	Very poor trunk and crown forms; competing crowns with adjacent tree; some <i>deadwood</i> present.	REMOVE (development)
224	Austrian pine <i>Pinus nigra</i>	47.5	8	Poor	Poor crown form – competing with adjacent tree; some <i>deadwood</i> present; symptoms of DTB present.	REMOVE (development)
225	Austrian pine <i>Pinus nigra</i>	48.5	8	Poor	Poor crown form – competing with adjacent tree; some <i>deadwood</i> present; symptoms of DTB present.	REMOVE (development)
226	Silver maple <i>Acer saccharinum</i>	45	10	Fair	Trunk divides into multiple stems at 2 to 3m; generally balanced crown condition.	REMOVE (development)
227	Silver maple <i>Acer saccharinum</i>	87	20	Fair	Very large spreading crown with some <i>deadwood</i> present; surface roots present, some damaged by grass mower machine; trunk divides at 2m into 2 upright stems and scaffold branches;	REMOVE (development)
228	Silver maple <i>Acer saccharinum</i>	52.5	10	Poor to fair	Poor crown and trunk forms; large branches pruned; epicormic shoots present.	REMOVE (development)
229	Silver maple <i>Acer saccharinum</i>	43.5	8	Fair	Somewhat poor crown form due to competition with adjacent tree.	REMOVE (development)
230	Silver maple <i>Acer saccharinum</i>	67.5	17	Poor to fair	Large scaffold branch present at 2m with strong union attachment; crown pruned; crown competing with adjacent tree; poor crown form; surface roots present with some damaged by grass mower machine.	REMOVE (development)

*Diameter at Breast Height measured at 1.4m above ground level.

** Plant Condition rating is determined based on International Society of Arboriculture (I.S.A.) protocol.

I verify that the information provided above is true, accurate and has been provided to the best of my ability.

Paul D. Ferris

*Name of Certified/Registered Consulting
Arborist or Registered Professional Forester*



*Signature of Certified/Registered Consulting
Arborist or Registered Professional Forester*

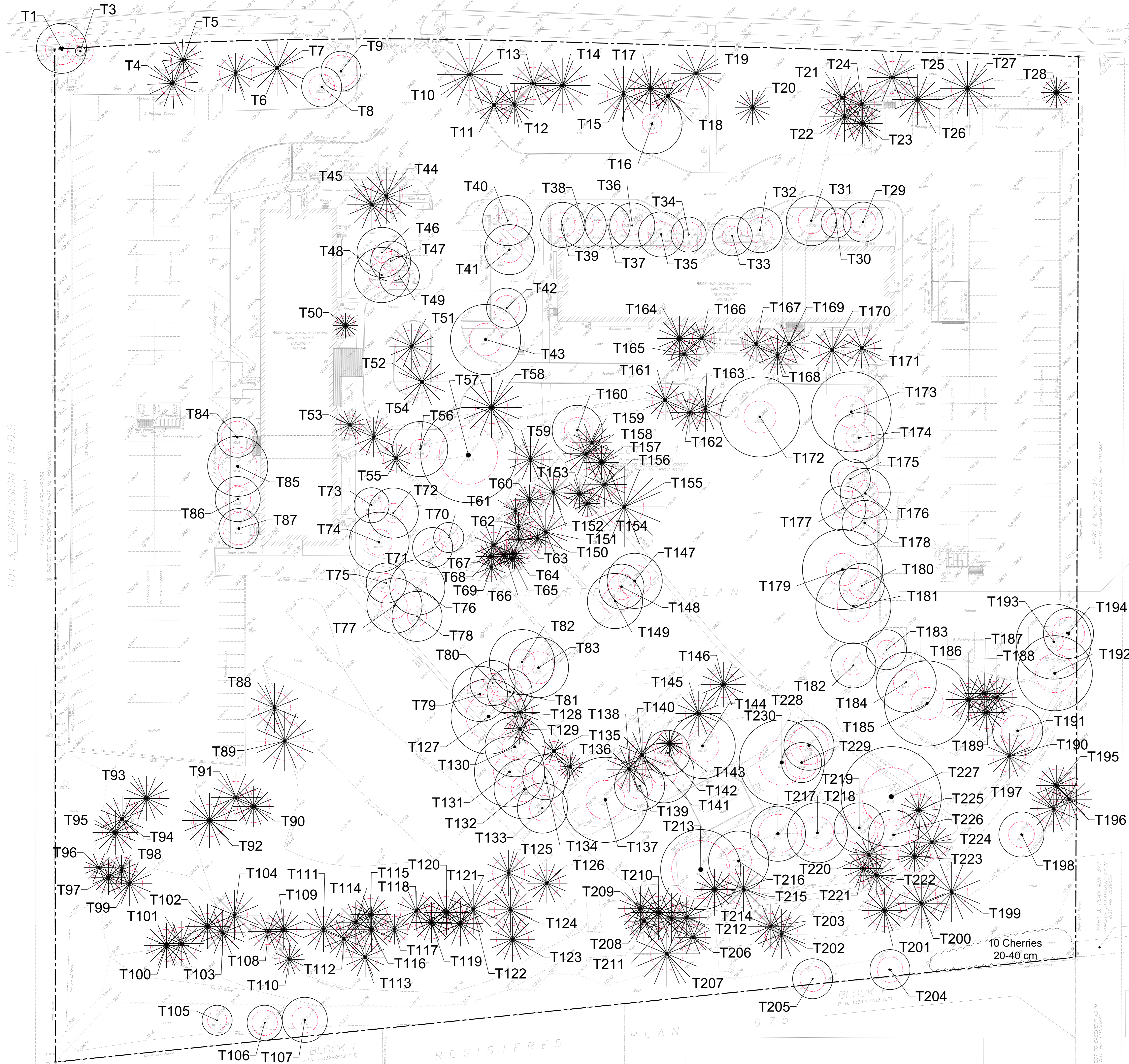
July 23, 2019

Date

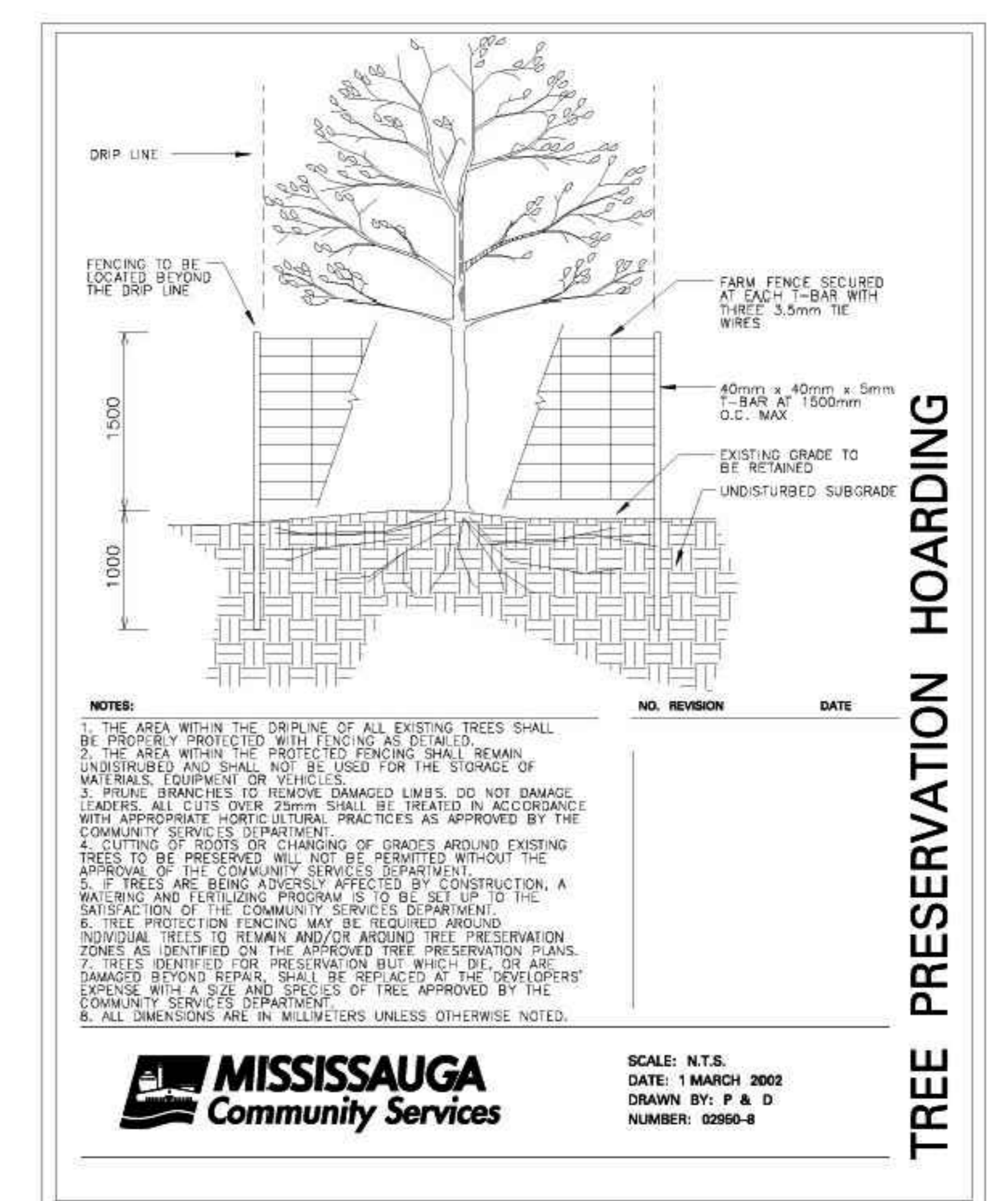
Section 2 – Declaration

Not Applicable

BLOOR STREET
(DEDICATED BY REG-10203 PLAN 1702
 P.I.N. 13331-0099 (L.D.)



- Notes**
- All existing trees which are to remain shall be fully protected with hoarding erected beyond the drip line to the satisfaction of the planning and building department prior to the issuance of the building permit. Groups of trees and other existing vegetation to be protected with hoarding around the entire area. Areas within the protective fencing shall remain undisturbed and shall not be used for the storage of building materials or equipment.
 - No rigging cables shall be wrapped around or installed in the trees and surplus soil, equipment, debris or material shall not be placed over the root systems of the trees within the protective fencing. No contaminants will be dumped or flushed where feeder roots of trees exist.
 - The developer or agents shall take every precaution necessary to prevent damage to the vegetation to be retained.
 - Where limbs or portions of trees are removed to accommodate construction, they will be removed in accordance with accepted arboricultural practice.
 - Where root systems of protected trees adjacent to construction are exposed or damaged they shall be neatly trimmed and the area backfilled with appropriate material to prevent desiccation.
 - Where necessary, vegetation will be given an overall pruning to restore the balance between roots and top growth, or to restore its appearance.
 - Trees that have died or have been damaged beyond repair shall be removed and replaced with a species approved by the Planning and Building Department.
 - If grades around trees to be protected are to change, the owner shall be required to take precautions such as dry welling, retaining wall, and root feeding to the satisfaction of the Planning and Building Department.



Legend

- T1: EXISTING DECIDUOUS TREE WITH TAG NUMBER - REFER TO TREE REMOVAL INVENTORY
- T0: EXISTING CONIFEROUS TREE TO REMAIN WITH TAG NUMBER - REFER TO TREE REMOVAL INVENTORY
- MINIMUM TREE PROTECTION ZONE
- TREE CROWN
- PROPERTY LINE

TREE LOCATIONS HAVE BEEN LOCATED IN FIELD AND ARE APPROXIMATE

No.	Date	Revision
1.	JUL 23-19	Issued for Tree Removal Inventory

Ferris + Associates Inc.
 Landscape Architecture and Urban Design
 11 Church Street
 Suite 305
 Toronto, Ontario
 M5E 1Y1
 Telephone: 416 366 6800
 www.ferrisassociates.com

Client: **Ranee Management**

Project: **1840-1850 Bloor Street**

Drawing Title: **Existing Tree Survey Plan**

Date Plotted: **JUNE 2019**

Scale: **1:300**

Drawn: **AD**

Checked: **PF**

Project No: **2588**

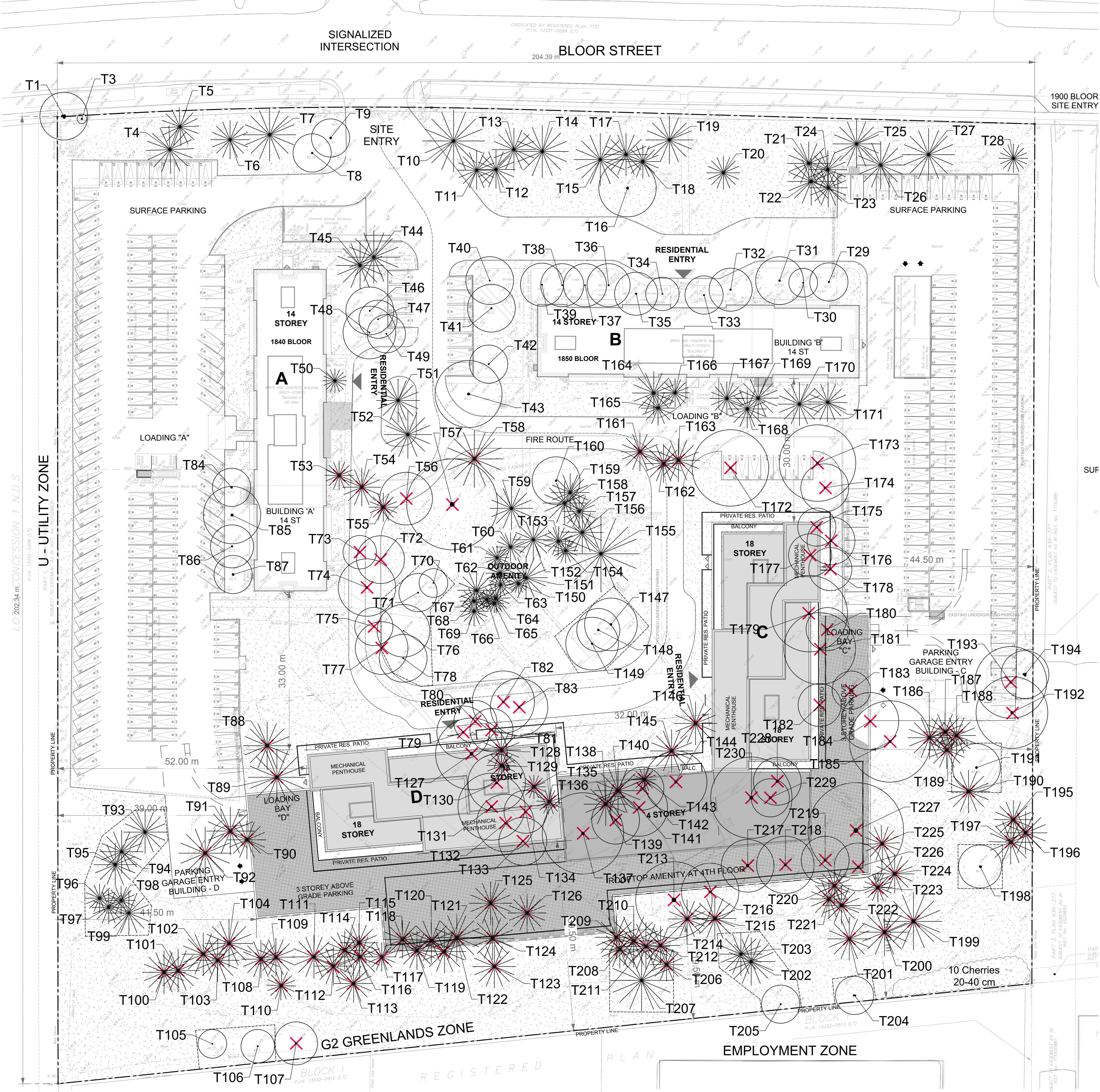
Drawing No: **TS-1**

LOT 3, CONCESSION 1 N.D.S
 P.I.N. 13332-0098 (L.D.)
 SUBJECT TO CASANOVA AS IN REG. PLAN 1770089

PART 2, PLAN 439-327
 SUBJECT TO CASANOVA AS IN REG. PLAN 1770089

PART 3, PLAN 439-377
 SUBJECT TO CASANOVA AS IN REG. PLAN 1770089

REGISTERED
 PLAN 13332-0013 (L.D.)
 SUBJECT TO CASANOVA AS IN REG. PLAN 1770089

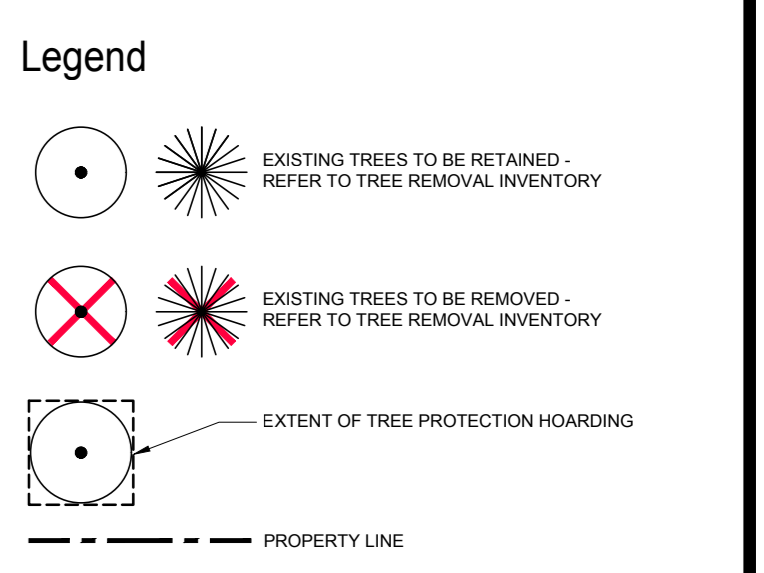


- Notes**
- All existing trees which are to remain shall be fully protected with hoarding erected beyond the drip line to the satisfaction of the planning and building department prior to the issuance of the building permit. Groups of trees and other existing vegetation to be protected with hoarding around the entire area. Areas within the protective fencing shall remain undisturbed and shall not be used for the storage of building materials or equipment.
 - No rigging cables shall be wrapped around or installed in the trees and surplus soil, equipment, debris or material shall not be placed over the root systems of the trees within the protective fencing. No contaminants will be dumped or flushed where feeder roots of trees exist.
 - The developer or agents shall take every precaution necessary to prevent damage to the vegetation to be retained.
 - Where limbs or portions of trees are removed to accommodate construction, they will be removed in accordance with accepted arboricultural practice.
 - Where root systems of protected trees adjacent to construction are exposed or damaged they shall be neatly trimmed and the area backfilled with appropriate material to prevent desiccation.
 - Where necessary, vegetation will be given an overall pruning to restore the balance between roots and top growth, or to restore its appearance.
 - Trees that have died or have been damaged beyond repair shall be removed and replaced with a species approved by the Planning and Building Department.
 - If grades around trees to be protected are to change, the owner shall be required to take precautions such as dry walling, retaining wall, and root feeding to the satisfaction of the Planning and Building Department.

Notes

BASE INFORMATION PROVIDED BY:
SPEIGHT, VAN NOSTRAND & GIBSON LIMITED
ONTARIO LAND SURVEYORS

BASED ON:
PLAN OF SURVEY WITH TOPOGRAPHY OF LOT 1
REGISTERED PLAN 775
CITY OF MISSISSAUGA
FORMER MUNICIPALITY OF PEEL



TREE LOCATIONS HAVE BEEN LOCATED IN FIELD AND ARE APPROXIMATE

No.	Date	Revision
1	JUL 23-19	Issued for Tree Removal Inventory

This drawing is to be used for construction unless signed by the Landscape Architect

Not to be used for construction unless signed by the Landscape Architect

Ferris + Associates Inc.
Landscape Architecture and Urban Design
11 Church Street
Suite 305
Toronto, Ontario
M5E 1Y1
Telephone: 416 366 6800
www.ferrisassociates.com

Client: **Ranee Management**

Project: **1840-1850 Bloor Street**

Mississauga, Ontario
Drawing Title: **Tree Removal and Preservation Plan**

Date Plotted: JUNE 2019
Scale: 1:300
Drawn: AD
Checked: PF
Project No: 2588
Drawing No: **TS-2**