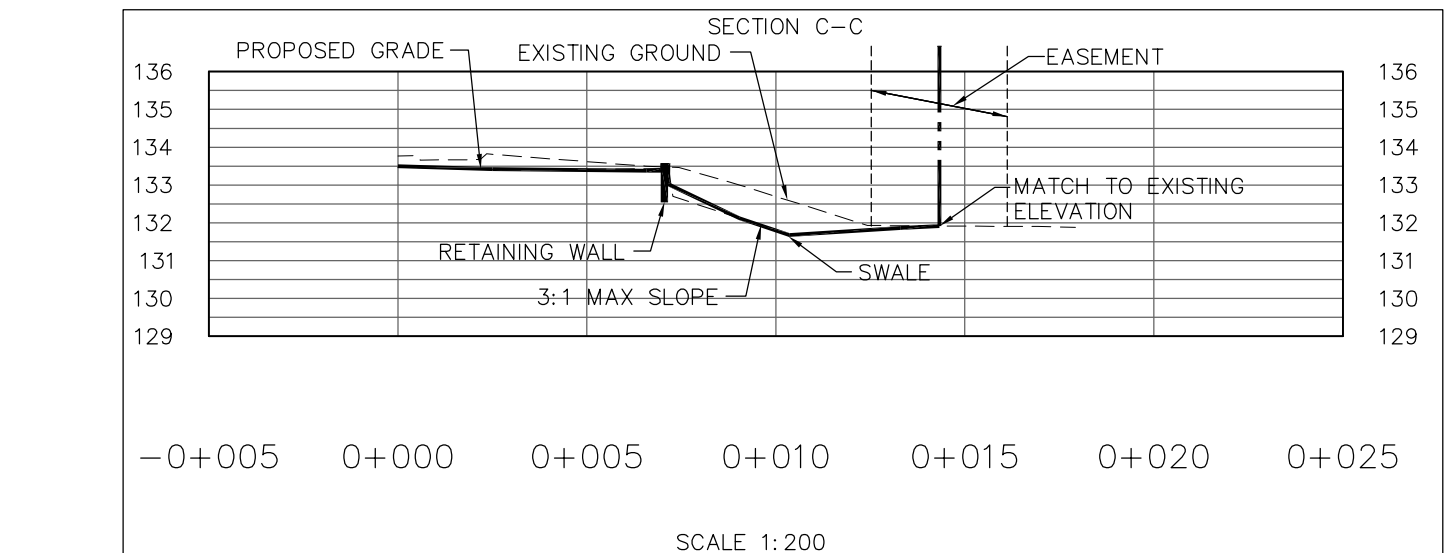
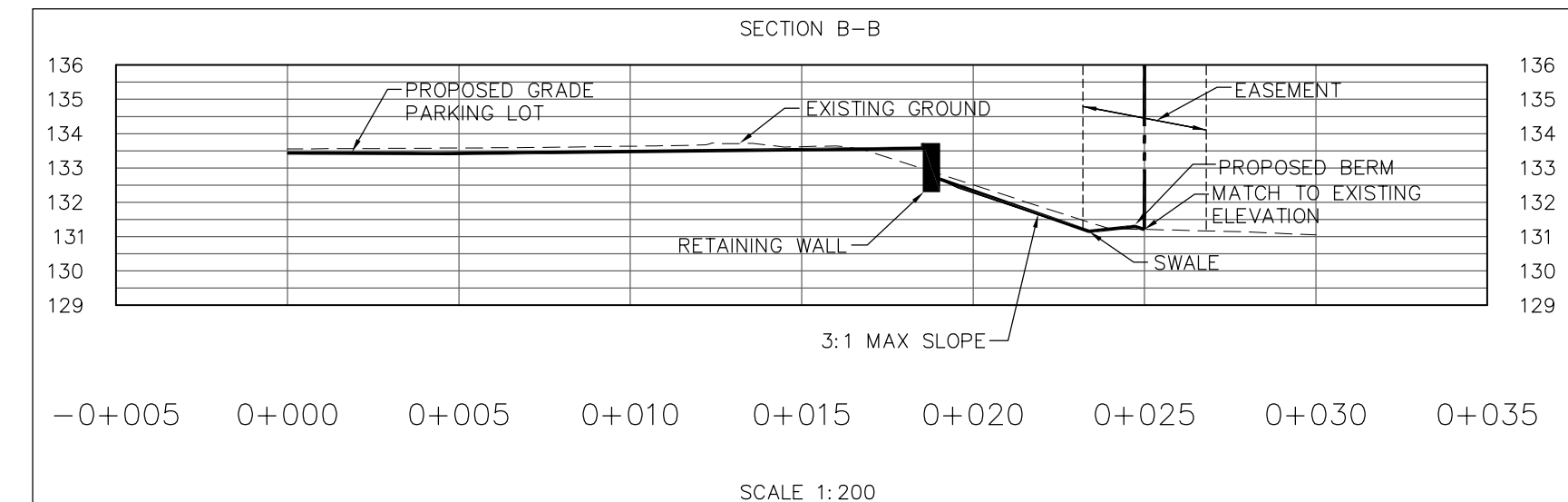
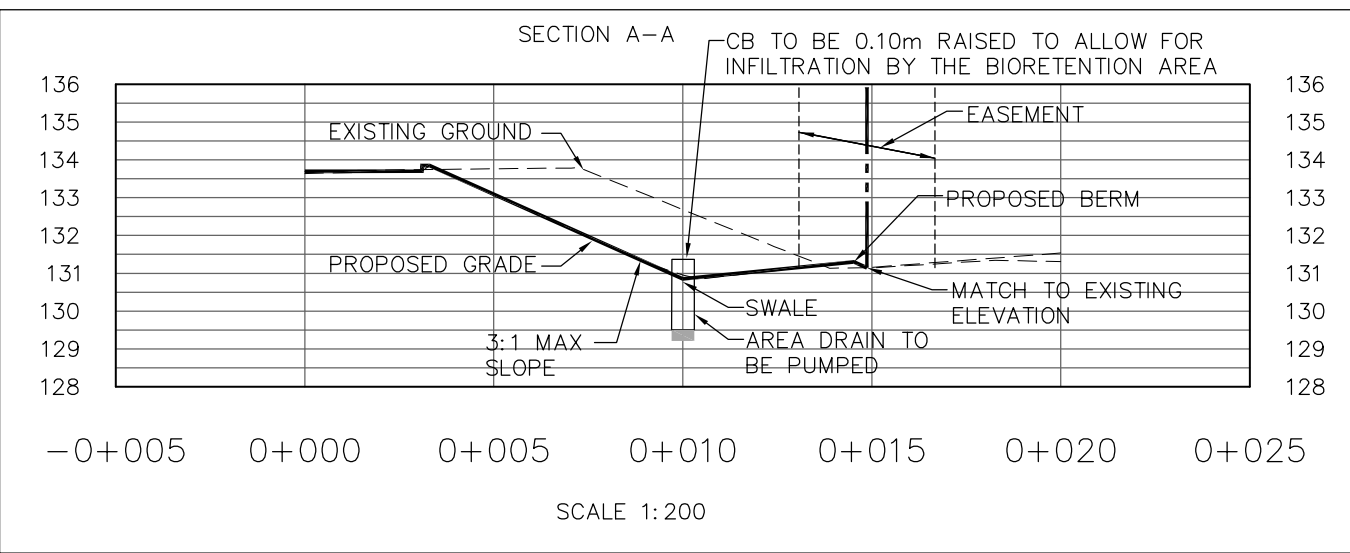


KEY PLAN

LEGEND

- × 133.22EX. EXISTING ELEVATION
- × 133.23 PROPOSED ELEVATION
- EMERGENCY OVERLAND FLOW
- PROPOSED VALVE AND BOX
- PROPOSED SANITARY MANHOLE
- PROPOSED STORM MANHOLE
- PROPOSED AREA DRAIN
- PROPERTY LINE
- ▣ LIMIT OF UNDERGROUND PARKING

7.	ISSUED FOR OPA & REZONING	APR 07, 2020	AKD
6.	ISSUED FOR OPA & REZONING	JUL 24, 2019	AKD
5.	ISSUED FOR OPA & REZONING	JAN 16, 2019	AKD
4.	ISSUED FOR OPA & REZONING	OCT 17, 2018	AKD
3.	ISSUED FOR BELL/HYDRO COORDINATION	SEPT 11, 2018	AKD
2.	ISSUED FOR OPA & REZONING	APR 18, 2018	AKD
1.	ISSUED FOR OPA & REZONING	OCT 31, 2017	AKD
No.	REVISIONS/ISSUED	DATE	BY CITY



**LEGAL & TOPOGRAPHY**  
 PROVIDED BY: SCHAEFFER DZALDOV BENNETT LTD  
 64 JARDIN DRIVE  
 CONCORD, ONTARIO, L4K3P3  
 PHONE: (416) 987-0101

**BENCHMARK**  
 NOTE:  
 ELEVATIONS SHOWN HEREON ARE  
 GEODETIC AND ARE REFERRED TO  
 CITY OF MISSISSAUGA BENCHMARK  
 No. 985, HAVING A PUBLISHED  
 ELEVATION OF 129.292 METRES.

**counterpoint** ENGINEERING  
 COUNTERPOINT ENGINEERING INC.  
 8395 Jane St., Suite 100, Vaughan, ON L4K 5Y2 Phone 905.326.1404 Fax 905.326.1405

APPLICANT:  
**TIMBERCREEK MANAGEMENT INC.**

SITE LOCATION:  
**1750 BLOOR STREET  
 RESIDENTIAL DEVELOPMENT  
 1750 BLOOR STREET  
 MISSISSAUGA, ONTARIO  
 SITE PLAN FILE No.:**

**GRADING PLAN**

DESIGNED BY: DC	CHECKED BY: JY	DATE: OCTOBER 2017
DRAWING BY: DC	CHECKED BY: JY	PROJECT NO. <b>17020</b>
SWM BY: TM	CHECKED BY: GP	DRAWING NO. <b>C100</b>

SCALE: 1:500m  
 0m 5m 10m 20m 30m