

1B	ISSUED FOR COORDINATION	2019/OCT/08
1A	ISSUED FOR COORDINATION	2018/OCT/31
1	ISSUED FOR FSR	2017/DEC/06
0	ISSUED FOR FSR (NOT SUBMITTED)	2017/SEP/14
No.	ISSUE / REVISION	YYYY/MM/DD

SITE PLAN NOTES:
 DESIGN ELEMENTS ARE BASED ON SITE PLAN BY KIRKOR ARCHITECTS + PLANNERS. DRAWING DATED SEPT 2019

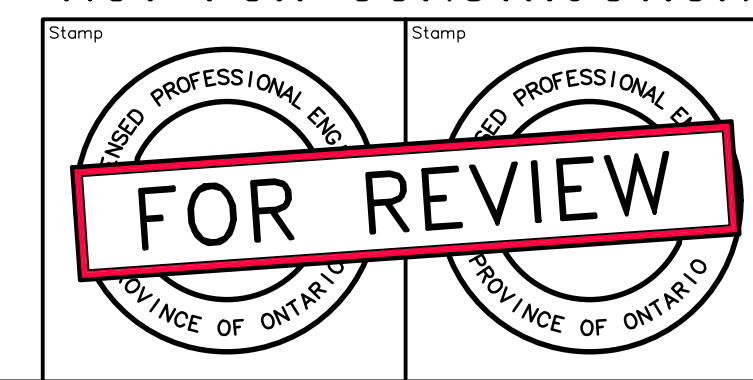
DRAWING NOTES:
 THIS DRAWING IS THE EXCLUSIVE PROPERTY OF C.F. CROZIER & ASSOCIATES INC. AND THE REPRODUCTION OF ANY PART OF IT WITHOUT PRIOR WRITTEN CONSENT OF THIS OFFICE IS STRICTLY PROHIBITED.
 THE CONTRACTOR SHALL VERIFY ALL DIMENSIONS, LEVELS, AND DATUMS ON SITE AND REPORT ANY DISCREPANCIES OR OMISSIONS TO THIS OFFICE PRIOR TO CONSTRUCTION.
 THIS DRAWING IS TO BE READ AND UNDERSTOOD IN CONJUNCTION WITH ALL OTHER PLANS AND DOCUMENTS APPLICABLE TO THIS PROJECT. DO NOT SCALE THIS DRAWING.
 ALL EXISTING UNDERGROUND UTILITIES TO BE VERIFIED IN THE FIELD BY THE CONTRACTOR PRIOR TO CONSTRUCTION.

Project
1575 HURONTARIO STREET
CITY OF MISSISSAUGA

Drawing
TRUCK TURNING PLAN



NOT FOR CONSTRUCTION



2800 High Point Drive
 Suite 100
 Milton, ON L9T 6P4
 905 875-0026 T
 905 875-4915 F
 www.cfcrozier.ca

Drawn	T.F.	Design	T.F.	Project No.	1110-4677	
Check	M.C.	Check	M.C.	Scale	1:250	
					Dwg.	C 03