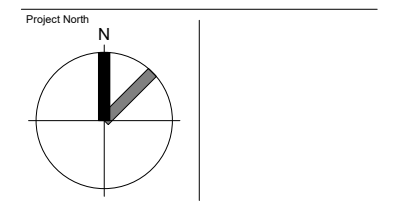
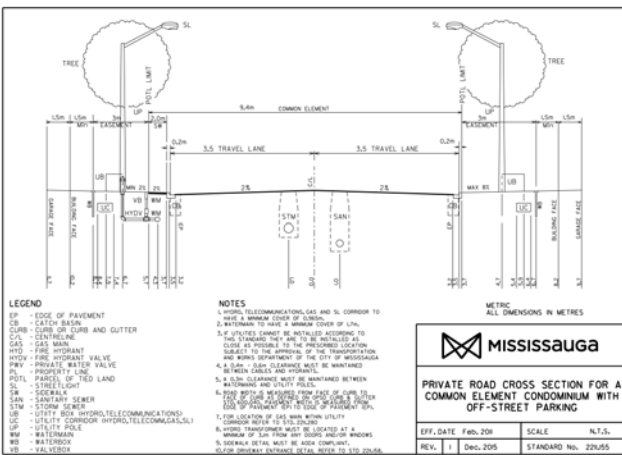
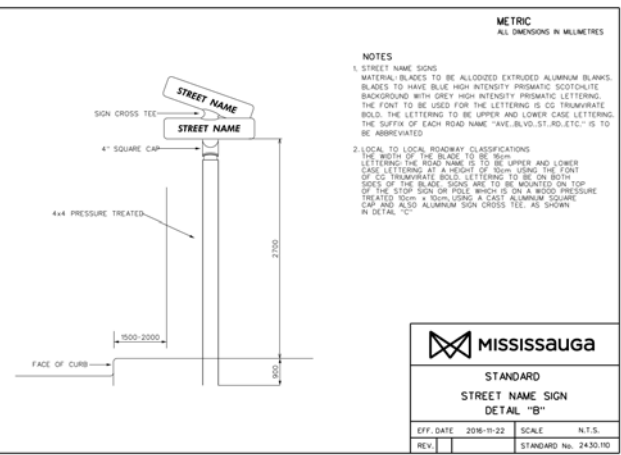
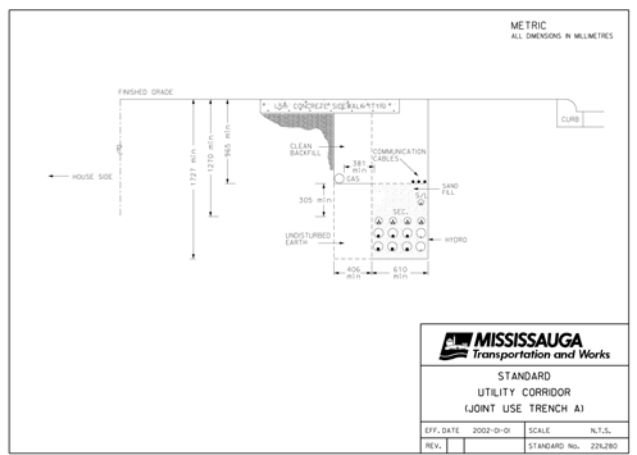
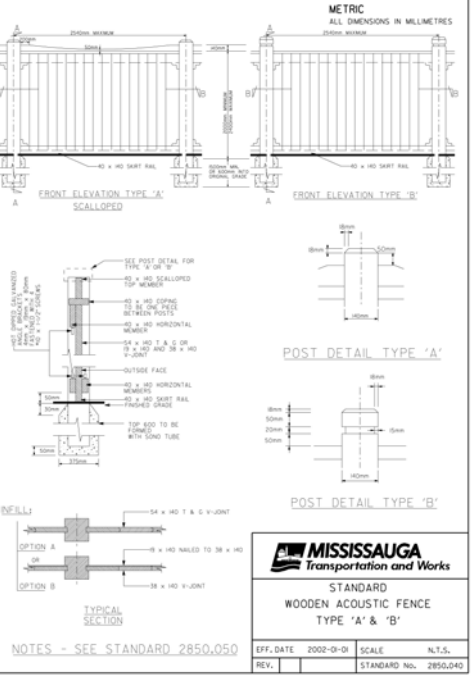
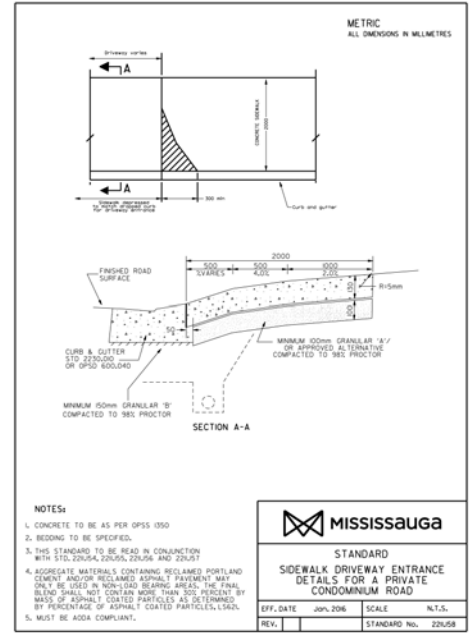
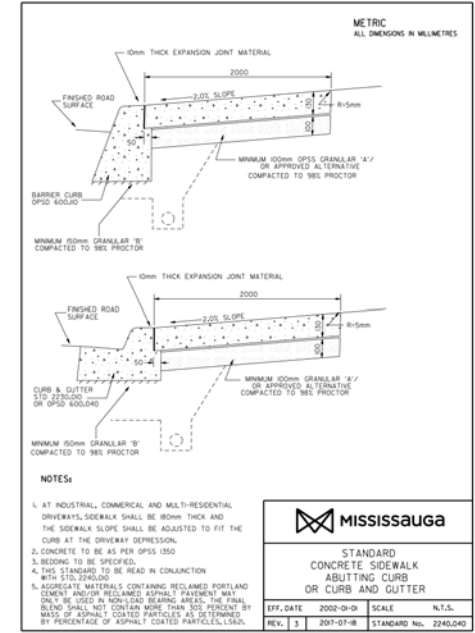
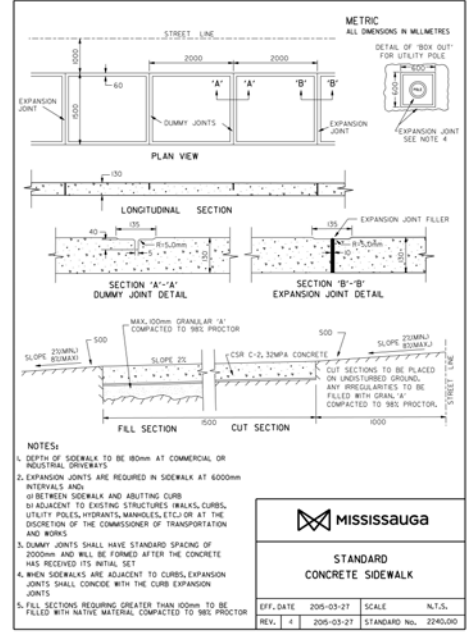
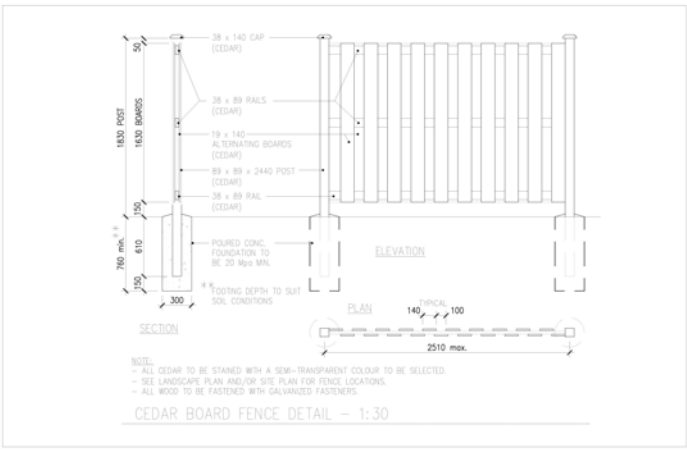


**1444
1458**

1444-1458 CAWTHRA ROAD
MISSISSAUGA, ON

© Copyright KFA Architects and Planners Inc., all rights reserved. No part of this document whether printed form or supplied as digital data may be reproduced, stored in a retrieval system or transmitted in any form or by any means, mechanical, photocopying, recording or otherwise without the prior written permission of KFA Architects and Planners Inc.. All dimensions to be checked on site by the contractor. Drawings are not to be scaled, and any discrepancies are to be reported to the Architect before proceeding with the work.

1	Issue to Consultants	2018.09.12
2	Issue for OPI/RZ	2018.09.28



Project No: 16071
Scale:
Date: 2017/04/05
Drawn by: N/A
Drawing Title

Typical Site Details

Drawing Number

A003