

NOTICE OF STUDY COMPLETION

Municipal Class Environmental Assessment Study for the Extension of Square One Drive

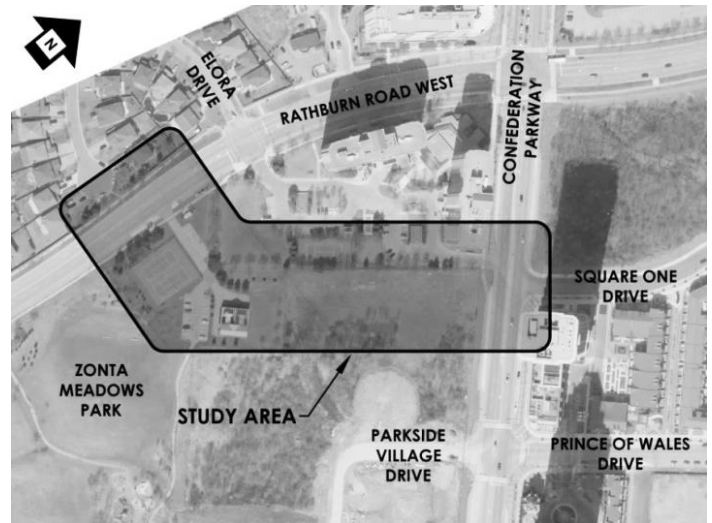
The City of Mississauga has completed a Municipal Class Environmental Study for the extension of Square One Drive, from Rathburn Road West to Confederation Parkway (the "Study"). This Study was conducted in accordance with the planning and design process for 'Schedule C' projects as outlined in the Municipal Engineers Association Municipal Class Environmental Assessment document, as amended in 2015, which is approved under the Ontario *Environmental Assessment Act*.

The Study was undertaken to investigate the need to:

- improve access to, from, and within downtown Mississauga, and areas beyond;
- support multi-modal transportation and encourage opportunities to travel by walking, cycling, and transit; and
- create a finer street grid in downtown Mississauga with an urban scale, more walkable blocks, new routing options for local trips, and better transit access.

Based on the findings of the Study, the Preferred Design for the extension of Square One Drive generally includes the following key elements:

- a sidewalk on the south side of the street and a multi-use trail on the north side of the street;
- on-street parking on the south side of the street;
- a roundabout where the extension of Square One Drive meets Rathburn Road West; and
- removal of the existing traffic signal at the intersection of Rathburn Road West and the east leg of Elora Drive (just west of Confederation Parkway) and construction of a raised median through the intersection to restrict it to right-turns in and out only.



The Environmental Study Report ("ESR") has been prepared to document the planning and decision-making process for this Study. By this Notice, the ESR is being placed on the public record for a thirty (30) day review period from and including November 6, 2017 to December 6, 2017 at the following locations:

The City of Mississauga
Office of the City Clerk
300 City Centre Drive, 2nd Floor
Mississauga, ON L5B 3C1
Telephone: (905) 615-4311
Monday-Friday: 8:30 am to 4:30 pm
Weekends: Closed

Courtneypark Branch Library
730 Courtneypark Drive West
Mississauga, ON L5W 1L9
Telephone: (905) 615-4745
Monday-Friday: 8:00 am to 9:00 pm
Saturday: 9:00 am to 5:00 pm
Sunday: 1:00 pm to 5:00 pm

A copy of the ESR is also available on the City of Mississauga website: www.mississauga.ca/squareoneclassea

Interested persons may provide written comments to the City of Mississauga's Project Manager, Dana Glofcheskie, P.Eng. (see contact information below). If concerns regarding this project cannot be resolved in discussions with the City of Mississauga, a person or party may request the Minister of the Environment and Climate Change to make an order (referred to as a Part II Order) for the project to comply with Part II of the Environmental Assessment Act which addresses Individual Environmental Assessments. The written request must be received by the Minister within the thirty (30) calendar day review period, with a copy to the Director, Environmental Approvals Branch and the City of Mississauga Project Manager.

Honorable Chris Ballard
Minister of Environment and Climate Change
77 Wellesley Street West, 11th Floor
Toronto, ON M7A 2T5
minister.moecc@ontario.ca

Director, Environmental Approvals Branch
Ministry of the Environment and Climate Change
135 St. Clair Avenue West, 1st Floor
Toronto, ON M4V 1P5

City of Mississauga Project Manager
Dana Glofcheskie, P. Eng.
201 City Centre Drive, Suite 800
Mississauga, ON L5B 2T4
Tel: (905) 615-3200, ext. 8243
dana.glofcheskie@mississauga.ca

Personal information is collected under the authority of the Environmental Assessment Act and will be used in the assessment process. With exception of personal information, all comments shall become part of the public records. Questions about this collection should be directed to the City of Mississauga Project Manager listed above.

This notice was first published on November 2, 2017.