

CITY OF MISSISSAUGA – NOTICE OF PUBLIC INFORMATION CENTRE

Municipal Class Environmental Assessment Study for the extension of Square One Drive

WHAT?

- The City of Mississauga is studying the extension of Square One Drive, from Rathburn Road West to Confederation Parkway, as part of a study called a Class Environmental Assessment (Class EA).

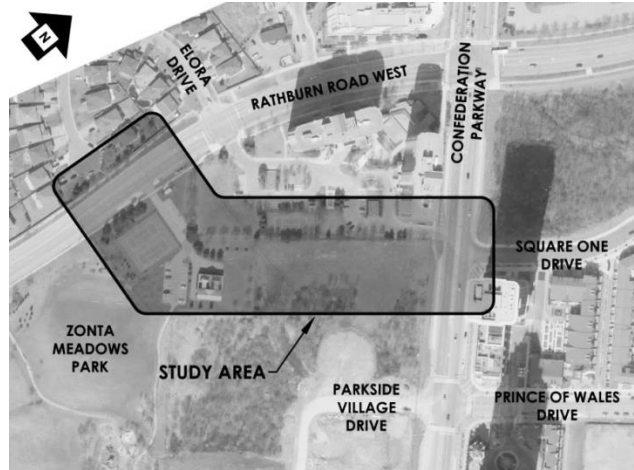
WHY?

- To improve access to, from, and within downtown Mississauga, and areas beyond.
- To support “multi-modal” transportation and encourage opportunities to travel by walking, cycling, and transit.
- To create a finer street grid in downtown Mississauga with an urban scale, more walkable blocks, new routing options for local trips, and better transit access.

HOW?

- By building the extension of Square One Drive as a two-lane local street between Confederation Parkway and Rathburn Road West, including:
 - a sidewalk on the south side of the street and a multi-use trail on the north side of the street
 - on-street parking
 - landscaping, streetscaping, and improved access to Zonta Meadows Park
- a roundabout where the Square One Drive extension meets Rathburn Road West
- removing the traffic signal at the intersection of Rathburn Road West and the east leg of Elora Drive (just west of Confederation Parkway) and extending a raised median through the intersection to restrict it to right-turns in and out only

WHERE?



GET INVOLVED!

- Consultation is an important part of the Class EA process. During the study, the Project Team will contact various agencies, as well as members of the community who live and/or work near the study area (called stakeholders). Their opinions will be considered as part of any decisions that are made.
- Two workshops (called Public Information Centres, or PICs) will take place during the study so that attendees can review progress, and discuss any questions or comments with the Project Team directly. PIC #1 took place on June 22, 2016.
- At PIC #2, the Project Team will present preliminary designs for the extension of Square One Drive, their evaluation of those designs, and upcoming study activities.

WE WANT TO HEAR FROM YOU – PLEASE ATTEND PUBLIC INFORMATION CENTRE #2!

6:00 – 8:00pm

Thursday, November 17, 2016

The Great Hall, Mississauga City Hall, 300 City Centre Dr, Mississauga, ON

To find out more about study announcements and other information, please visit the study website:

www.mississauga.ca/squareoneclassea

If you have any questions or comments regarding the study, or wish to be removed from the study mailing list, please contact:

squareoneclassea@stantec.com

(or complete a comment sheet after the PIC on our study website)

Dana Glofcheskie, P.Eng.
Project Manager
 City of Mississauga
 201 City Centre Dr, Suite 800
 Mississauga, ON L5B 2T4
 (905) 615-3200, ext. 8243

Travis Brown, PMP
Consultant Project Manager
 Stantec Consulting Ltd.
 300W – 675 Cochrane Dr
 Markham, ON L3R 0B8
 (905) 944-6866