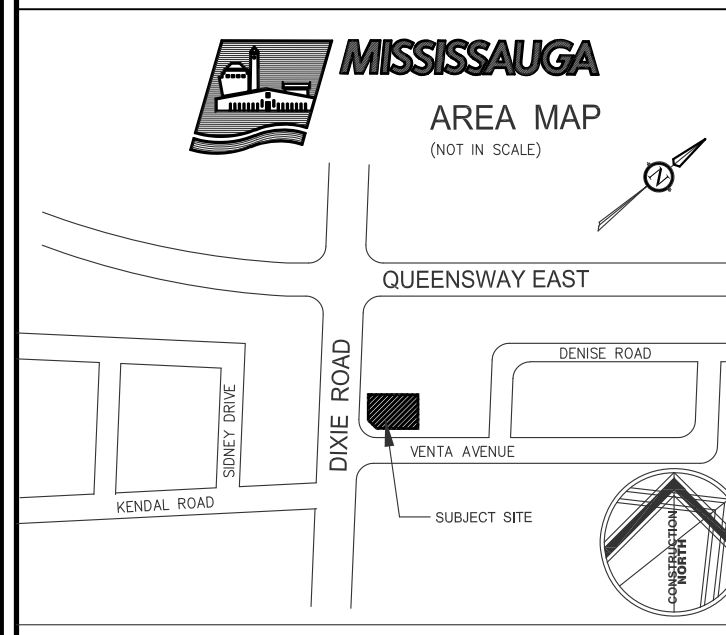
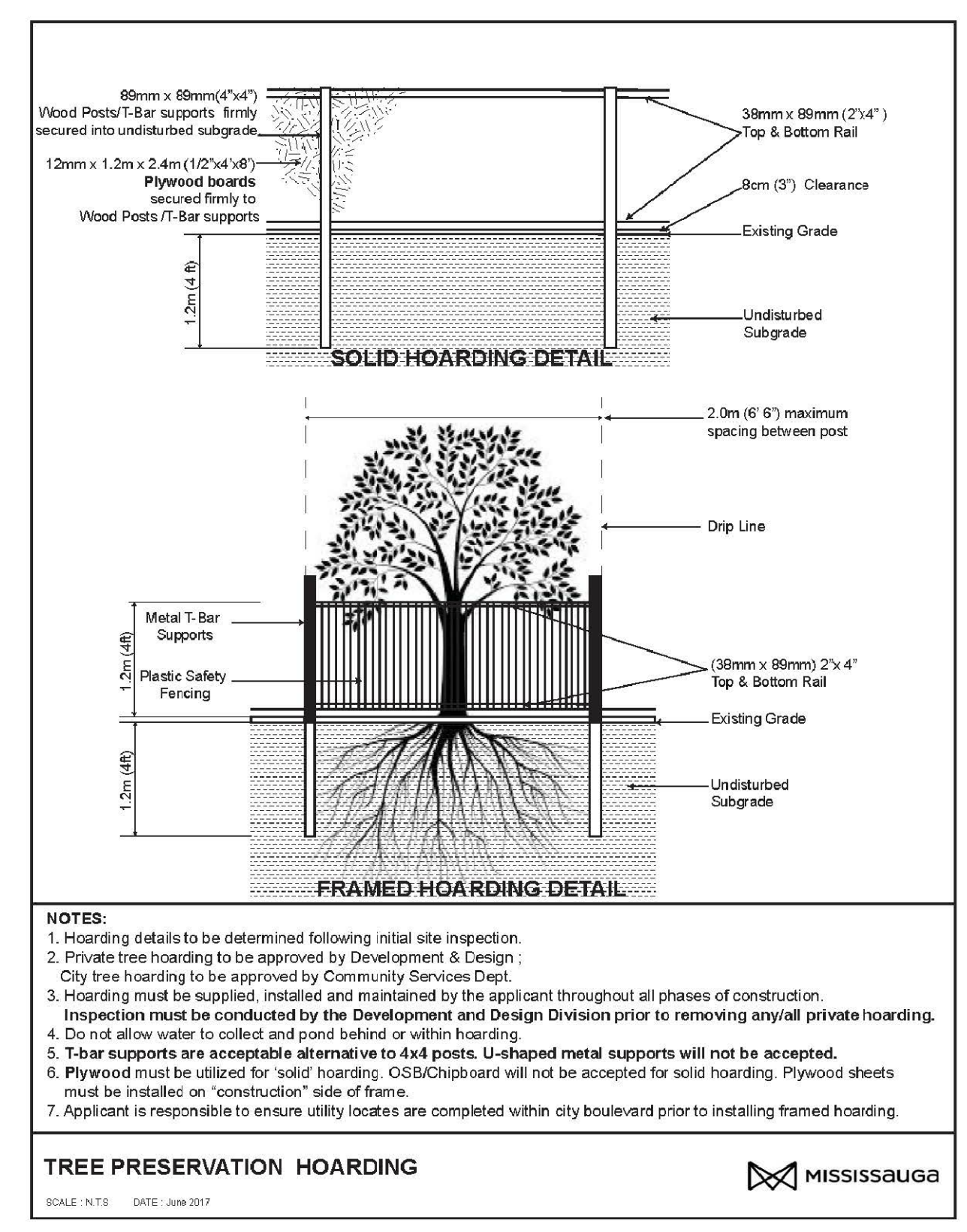
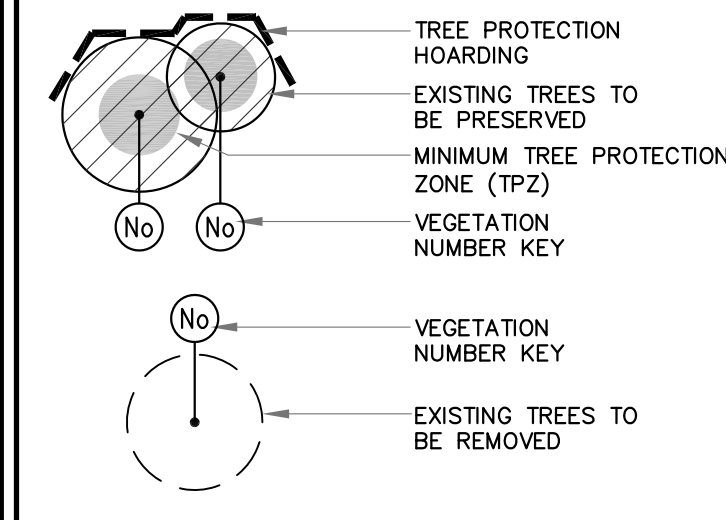


GENERAL NOTES

- VERIFY ALL DIMENSIONS.
- DO NOT SCALE DRAWINGS.
- REPORT ANY DISCREPANCIES, DISCOVERED ERRORS, OR OMISSIONS TO THE LANDSCAPE ARCHITECT BEFORE PROCEEDING.
- IT IS ADVISED THAT CONTRACTORS CONTACT THE LANDSCAPE ARCHITECT PRIOR TO CONSTRUCTION TO ENSURE THE USE OF THE LATEST REVISED DRAWINGS.
- DRAWINGS AND SPECIFICATIONS ARE THE PROPERTY OF THE LANDSCAPE ARCHITECT.



KEY MAP LEGEND

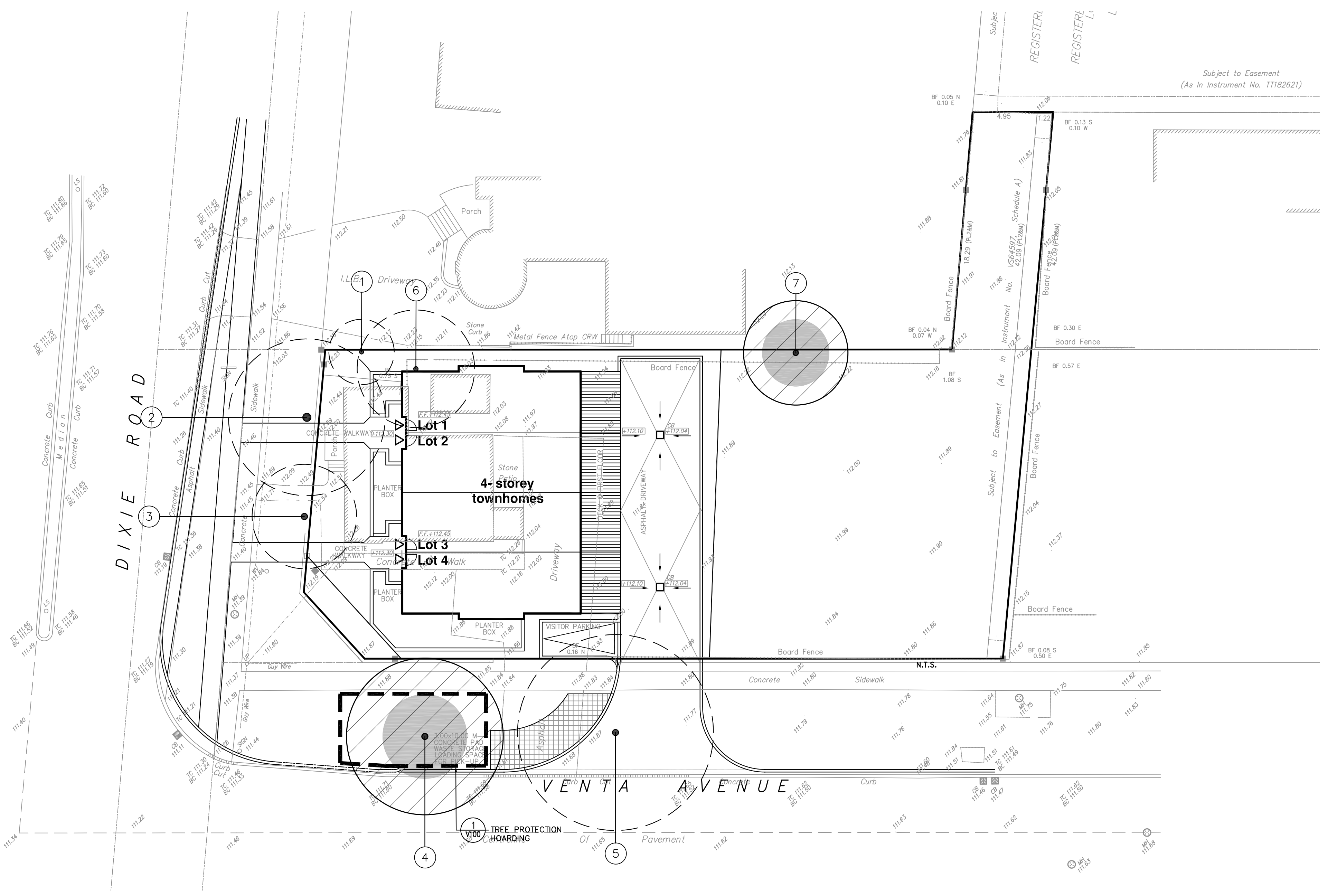


- NOTES**
- Hoarding details to be determined following initial site inspection.
 - Private tree hoarding to be approved by Development & Design.
 - City tree hoarding to be approved by Community Services Dept.
 - Hoarding must be supplied, installed and maintained by the applicant throughout all phases of construction.
 - Inspection must be conducted by the Development and Design Division prior to removing any/all private hoarding.
 - Do not allow water to collect and pond behind or within hoarding.
 - T-bar supports are acceptable alternative to 4x4 posts. U-shaped metal supports will not be accepted.
 - Plywood must be utilized for solid hoarding. OSB/Chipboard will not be accepted for solid hoarding. Plywood sheets must be installed on "construction" side of frame.
 - Applicant is responsible to ensure utility locates are completed within city boulevard prior to installing framed hoarding.
- TREE PRESERVATION HOARDING**

EXISTING TREE INVENTORY

KEY	SPECIES	CALIPER (IN (cm))	CROWN (IN (m))	HEALTH (G/F/P)	STRUCTURE	COMMENTS	PRESERVATION DIRECTION	MIN. TPZ	KEY
1	NORWAY SPRUCE	32	5.0	POOR-FAIR	GOOD FORM	ELEVATED CROWN, DEADWOOD AND DECLINE IN LEADER AND LOWER CROWN	REMOVE	2.4	1
2	DEBORAH NORWAY MAPLE	63	12.0	GOOD	GOOD FORM	OLD PRUNING WOUNDS ON STEM, UNBALANCED CROWN DUE TO OVERHEAD WIRES	REMOVE	4.2	2
3	CRIMSON KING NORWAY MAPLE	49	8.0	POOR	IRREGULAR FORM	DECLINING CROWN, EPICORMIC GROWTH THROUGHOUT	REMOVE	3	3
4	NORWAY MAPLE	46	12.0	GOOD	GOOD FORM	MINOR INTERNAL EPICORMIC GROWTH, SOME INTERNAL TWIG TIP DIEBACK	PRESERVE	3	4
5	NORWAY MAPLE	48	15.0	POOR-FAIR	BROAD FORM	GIRDLED ROOTS, WEST SIDE OF CROWN IN DECLINE, EPICORMIC GROWTH THROUGHOUT CROWN	REMOVE	3	5
6	WHITE MULBERRY	34	9.0	GOOD	DOUBLE STEM	ONE SIDED FORM, CROWDED BY ADJACENT TREE, INCLUDED BARK	REMOVE	2.4	6
7	NORWAY SPRUCE	40	8.0	GOOD	GOOD FORM	CROWN ELEVATED	PRESERVE	2.4	7

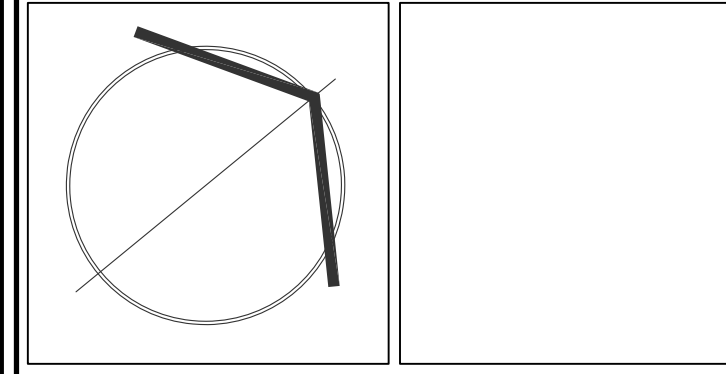
1 TREE PROTECTION HOARDING 2 EXISTING TREE INVENTORY N.T.S.



Matthew C. Giffes
MATTHEW C. GIFFES
 International Society of Arboriculture
 Certified Arborist #ON-1144
 Date: OCT 01, 2019

No.	DATE	REVISION	BY

It is the responsibility of the Contractor and/or Owner to ensure that the drawings with the latest revisions are used for construction.



SBK 5770 HURONTARIO STREET, SUITE 320
 MISSISSAUGA, ONTARIO, L5R 3G5
 T: 416.695.4949 F: 905.712.3101
 WWW.STRYBOS.COM

STRYBOS BARRON KING
 LANDSCAPE ARCHITECTURE

PROJECT:
4-UNIT TOWNHOMES
 2207 DIXIE ROAD
 Mississauga, Ontario

DRAWING TITLE:
EXISTING TREE INVENTORY AND PRESERVATION PLAN

SCALE: 1 : 200	PROJECT No. 19-5381
DATE: OCT 2019	DRAWING No. L100
DRAWN BY: SS	
CHECKED BY: MG	