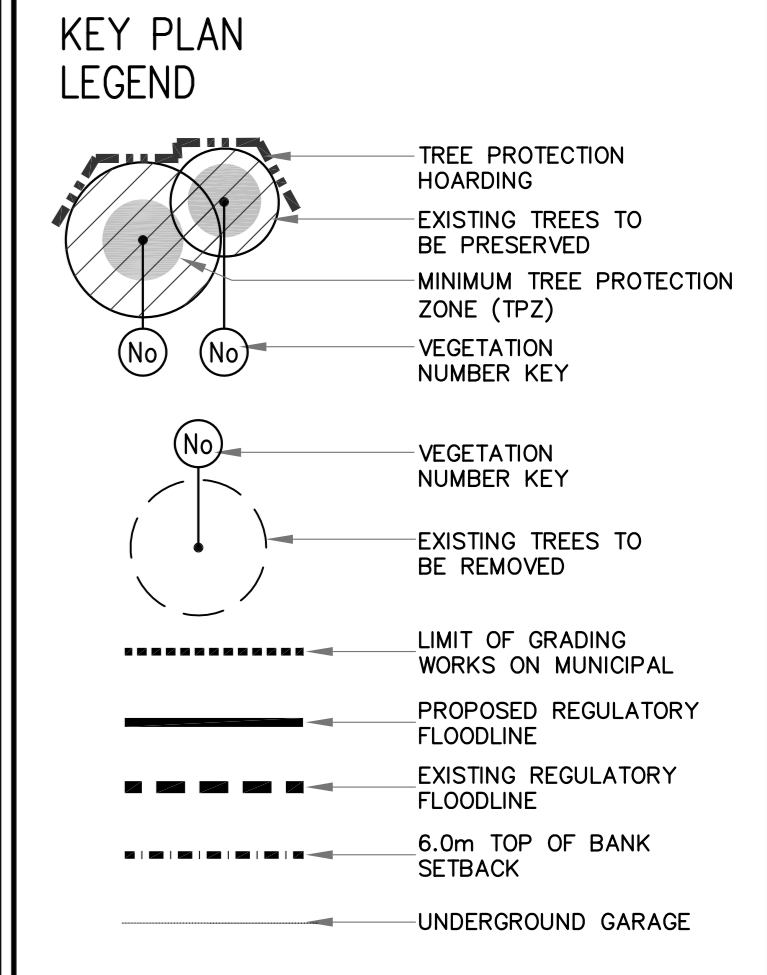
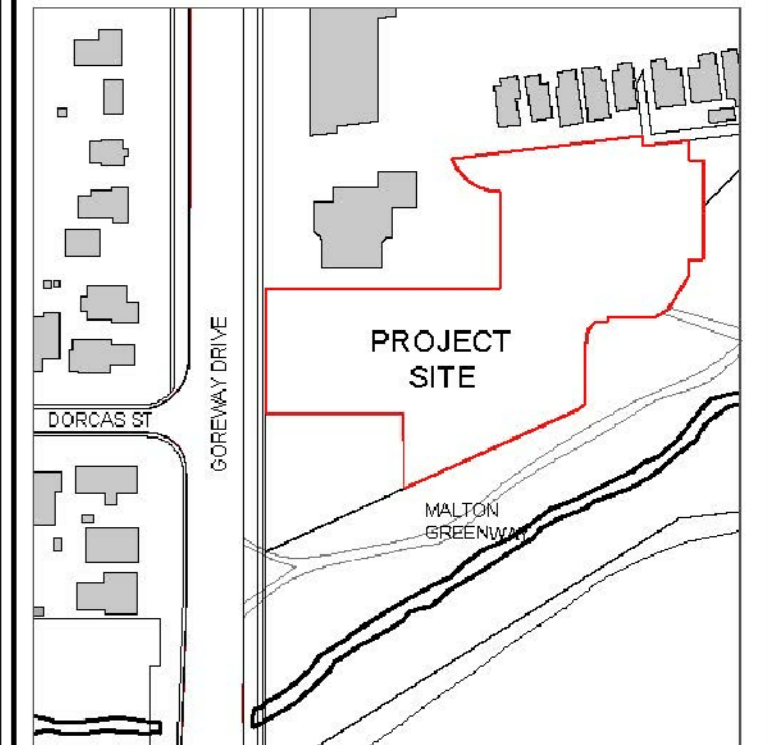
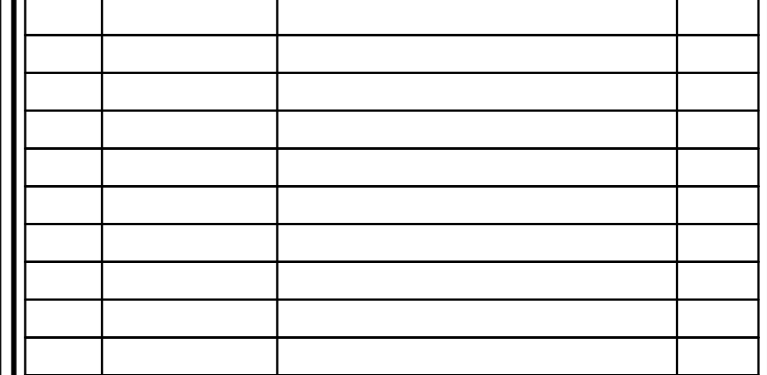


GENERAL NOTES
 VERIFY ALL DIMENSIONS.
 DO NOT SCALE DRAWINGS.
 REPORT ANY DISCREPANCIES, DISCOVERED ERRORS, OR OMISSIONS TO THE LANDSCAPE ARCHITECT BEFORE PROCEEDING.
 IT IS ADVISED THAT CONTRACTORS CONTACT THE LANDSCAPE ARCHITECT PRIOR TO CONSTRUCTION TO ENSURE THE USE OF THE LATEST REVISED DRAWINGS.
 DRAWINGS AND SPECIFICATIONS ARE THE PROPERTY OF THE LANDSCAPE ARCHITECT.

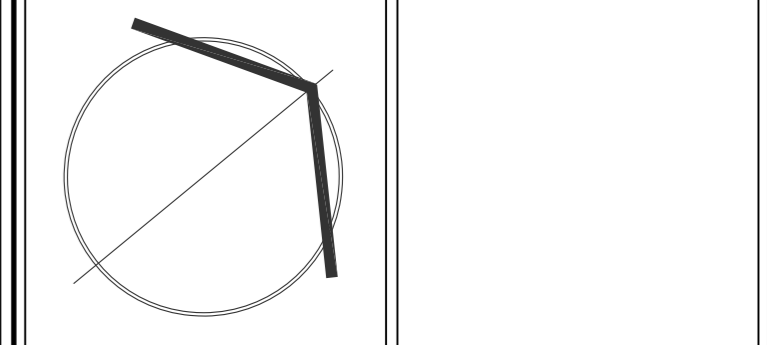


Matthew C. Oeffes
MATTHEW C. OEFFES
 International Society of Arboriculture
 Certified Arborist #CN-1144
 Date: MAY 09, 2020



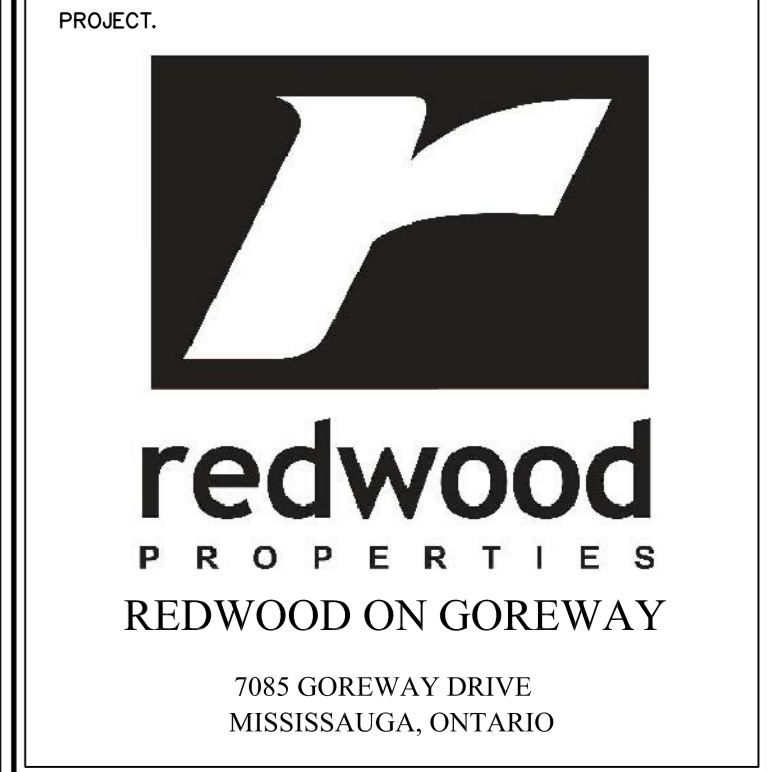
1 SEDIMENT CONTROL FENCE

It is the responsibility of the Contractor and/or Owner to ensure that the drawings with the latest revisions are used for construction.



SBK 5770 HURONTARIO STREET, SUITE 320
 MISSISSAUGA, ONTARIO, L5R 3S5
 T: 416.695.4949 F: 905.712.3101
 WWW.SBK905.COM

STRYBOS BARRON KING
 LANDSCAPE ARCHITECTURE



DRAWING TITLE:
EXISTING TREE INVENTORY AND PRESERVATION PLAN

SCALE: 1 : 250	PROJECT No. 20-5410
DATE: APRIL 2020	DRAWING No. V100
DRAWN BY: SS	CHECKED BY: MG

KEY	SPECIES	CALIPER	CROWN	HEALTH	STRUCTURE	COMMENTS	PRESERVATION	MIN. TPZ	KEY
1	NORWAY MAPLE	31.0	19.0	GOOD	GOOD FORM	HEALED FROST CRACK ON STEM	PRESERVE	2.4	1
2	NORWAY MAPLE	36.0	19.0	FAIR	DOUBLE LEADER	IRREGULAR FORM; SUCKER GROWTH AT BASE. INTERNAL CROWN DIEBACK	PRESERVE	1.8	2
3	RED MAPLE	10.0	4.0	FAIR	NARROW FORM	BASAL DECAY, FROST CRACK ON STEM	PRESERVE	1.8	3
4	RED MAPLE	12.0	5.0	GOOD	GOOD FORM		PRESERVE	1.8	4
5	RED MAPLE	11.0	5.0	GOOD	GOOD FORM	FROST CRACK ON STEM	PRESERVE	1.8	5
6	RUSSIAN OLIVE	40.0	12.0	POOR	DOUBLE LEADERS	BASAL DECAY, SUCKER GROWTH, DEADWOOD AND DIEBACK THROUGHOUT CROWN	PRESERVE	2.4	6
7	HONEYLOCUST	12.0	5.0	FAIR	GOOD FORM	MINOR TWIG TIP DIEBACK	REMOVE	1.8	7
8	HONEYLOCUST	12.0	5.0	FAIR	GOOD FORM	MINOR TWIG TIP DIEBACK	REMOVE	1.8	8
9	HONEYLOCUST	11.0	4.0	FAIR	GOOD FORM	SOME DIEBACK THROUGHOUT, SPARSE BRANCHING	REMOVE	1.8	9
10	HONEYLOCUST	16.5	6.0	FAIR	GOOD FORM	SUCKER GROWTH AT BASE	REMOVE	1.8	10
11	ASH	20.0	6.0	DEAD	GOOD FORM		REMOVE	1.8	11
12	ASH	26.0	8.0	POOR	IRREGULAR FORM	90% DEAD	REMOVE	1.8	12
13	ASH	33.0	10.0	POOR	BROAD FORM	DECLINING	REMOVE	2.4	13
14	HONEYLOCUST	11.0	5.0	GOOD	GOOD FORM	MINOR SUCKER GROWTH ON STEM	REMOVE	1.8	14
15	HONEYLOCUST	11.0	5.0	GOOD	ASYMMETRICAL FORM	MINOR SUCKER GROWTH ON STEM	REMOVE	1.8	15
16	HONEYLOCUST	12.0	5.0	GOOD	GOOD FORM	MINOR TWIG TIP DIEBACK	REMOVE	1.8	16
17	HONEYLOCUST	35.0	12.0	GOOD	ASYMMETRICAL FORM	CROWDED BY ADJACENT TREE; BROKEN LOWER LIMB, OPEN CROWN	REMOVE	2.4	17
18	HONEYLOCUST	27.5	11.0	GOOD	ASYMMETRICAL FORM	CROWDED BY ADJACENT TREE; DIEBACK ON LOWER BRANCHES	REMOVE	1.8	18
19	HONEYLOCUST	29.0	13.0	GOOD	ASYMMETRICAL FORM	CROWDED BY ADJACENT TREE; DIEBACK ON LOWER BRANCHES	REMOVE	1.8	19
20	HONEYLOCUST	32.0	12.0	FAIR	GOOD FORM	EPICORMIC GROWTH THROUGHOUT CROWN	REMOVE	2.4	20
21	HONEYLOCUST	40.0	11.0	GOOD	GOOD FORM	MINOR SUCKER GROWTH ON LOWER BRANCHES	REMOVE	2.4	21
22	AUSTRIAN PINE	23.5	4.0	FAIR	NARROW FORM	CROWDED BY ADJACENT TREE; CURVED DOUBLE STEM; DIEBACK ON LOWER BRANCHES	PRESERVE	1.8	22
23	SILVER MAPLE	20.0	7.0	GOOD	ONE SIDED FORM	CROWDED BY ADJACENT TREE; DIEBACK ON LOWER BRANCHES	PRESERVE	1.8	23
24	AUSTRIAN PINE	36.5	8.0	FAIR	DOUBLE LEADER	CURVED STEM; ADJACENT TREE; CROWDED BY ADJACENT TREE; BRANCHING TO GRADE	PRESERVE	2.4	24
25	AUSTRIAN PINE	45.0	6.0	FAIR	ONE SIDED FORM	CROWDED BY ADJACENT TREE; DIEBACK ON LOWER BRANCHES	PRESERVE	3	25
26	AUSTRIAN PINE	27.0	10.0	FAIR	MULTI-STEMMED	IRREGULAR FORM; CROWDED BY ADJACENT TREE; SPARSE BRANCHING	PRESERVE	1.8	26
27	COLORADO BLUE SPRUCE	33.0	7.0	GOOD	GOOD FORM	BRANCHING TO GRADE	PRESERVE	2.4	27
28	WHITE MULBERRY	10.0	6.0	FAIR	IRREGULAR FORM	MULTI-STEMMED; ELEVATED CROWN; CROWN VINE ENTANGLED	PRESERVE	1.8	28
29	MIXED NATURALIZED GROUPING	WHP-20	POOR	GOOD VARIETIES		IMMATURE, MIXED NATURALIZED GROUPING MAINLY COMPOSED OF DEAD OR OTHERWISE DECLINING AUSTRIAN PINE TREES. NEW REGENERATIVE GROWTH COMPOSED OF BUCKTHORN, SPINDLE, WHITE BIRCH, AND SILVER MAPLE. THIS GROUPING FORMS AN ISLAND OF VEGETATION BETWEEN MANICURED LAWN AREA AND AN ASPHALT MULTUSE TRAIL/ALLEYSIDE.	PRESERVE	1.8	29
30	SCOTS PINE	27.0	7.0	GOOD	GOOD FORM	HIGH CROWN; MINOR DIEBACK ON LOWER BRANCHES	REMOVE	1.8	30
31	HONEYLOCUST	16.0	7.0	GOOD	GOOD FORM	MINOR TWIG TIP DIEBACK	REMOVE	1.8	31
32	HONEYLOCUST	30.0	9.0	GOOD	GOOD FORM	MINOR INTERNAL DIEBACK	REMOVE	2.4	32
33	SCOTS PINE	33.0	6.0	GOOD	CO-DOMINANT LEADERS	HIGH CROWN, FUSED STEMS	REMOVE	2.4	33
34	SCOTS PINE	25.0	8.0	GOOD	GOOD FORM	DIEBACK ON LOWER BRANCHES	REMOVE	1.8	34
35	AUSTRIAN PINE	34.0	8.0	POOR	IRREGULAR FORM	DECLINING CROWN	REMOVE	2.4	35
36	AUSTRIAN PINE	34.0	8.0	GOOD	ASYMMETRICAL FORM	CROWDED BY ADJACENT TREE	REMOVE	2.4	36
37	AUSTRIAN PINE	30.0	7.0	GOOD	ASYMMETRICAL FORM	CROWDED BY ADJACENT TREE; ELEVATED CROWN	REMOVE	2.4	37
38	AUSTRIAN PINE	28.5	8.0	FAIR	IRREGULAR FORM	IRREGULAR FORM; NO CLEAR LEADER	REMOVE	1.8	38
39	AUSTRIAN PINE	27.0	6.0	FAIR	ONE SIDED FORM	CROWDED BY ADJACENT TREE; LEANING	REMOVE	1.8	39
40	AUSTRIAN PINE	29.0	6.0	POOR	ONE SIDED FORM	GROUNDED STEM; DECLINING	REMOVE	1.8	40
41	MANITOWA MAPLE	WHP-11	11.0	GOOD	MULTI-STEMMED	BROAD FORMED CLUSTER OF SEVERAL STEMS AT GRADE	REMOVE	1.8	41
42	AUSTRIAN PINE	32.0	7.0	GOOD	IRREGULAR FORM	MULTIPLE LEADERS; DIEBACK ON LOWER BRANCHES	PRESERVE	2.4	42
43	AUSTRIAN PINE	30.0	8.0	FAIR	IRREGULAR FORM	NO CLEAR LEADER; DIEBACK ON LOWER BRANCHES	PRESERVE	2.4	43
44	AUSTRIAN PINE	25.0	8.0	FAIR	IRREGULAR FORM	CURVED STEM; NO CLEAR LEADER	PRESERVE	1.8	44
45	AUSTRIAN PINE	42.0	8.0	GOOD	ONE SIDED FORM	CROWDED BY ADJACENT TREE; DIEBACK ON LOWER BRANCHES	PRESERVE	3	45
46	AUSTRIAN PINE	43.0	7.0	GOOD	ONE SIDED FORM	CROWDED BY ADJACENT TREE; DIEBACK ON LOWER BRANCHES	PRESERVE	3	46
47	AUSTRIAN PINE	44.0	12.0	GOOD	ASYMMETRICAL FORM	CROWDED BY ADJACENT TREE; BRANCHING TO GRADE	PRESERVE	3	47
48	AUSTRIAN PINE	51.0	9.0	GOOD	DOUBLE STEM	CROWDED BY ADJACENT TREE; STEMS FUSED TOGETHER; ONE SIDED FORM	PRESERVE	3.0	48
49	AUSTRIAN PINE	27.0	6.0	FAIR	ONE SIDED FORM	CROWDED BY ADJACENT TREE; DIEBACK ON LOWER BRANCHES	PRESERVE	1.8	49
50	AUSTRIAN PINE	32.0	7.0	GOOD	DOUBLE STEM	CROWDED BY ADJACENT TREE; ONE SIDED FORM	PRESERVE	2.4	50
51	AUSTRIAN PINE	34.0	8.0	GOOD	ASYMMETRICAL FORM	CROWDED BY ADJACENT TREE	PRESERVE	2.4	51
52	AUSTRIAN PINE	35.0	9.0	GOOD	ASYMMETRICAL FORM	CROWDED BY ADJACENT TREE	PRESERVE	2.4	52
53	HURONTARIO ASH	41.0	8.0	GOOD	ASYMMETRICAL FORM	LEANING STEM	PRESERVE	3	53
54	HONEYLOCUST	18.0	6.0	GOOD	GOOD FORM	MINOR DIEBACK ON LOWER BRANCHES	PRESERVE	1.8	54
55	HONEYLOCUST	20.0	6.0	GOOD	GOOD FORM	MINOR DIEBACK ON LOWER BRANCHES	PRESERVE	1.8	55
56	HONEYLOCUST	27.0	8.0	GOOD	ASYMMETRICAL FORM	MINOR DIEBACK ON LOWER BRANCHES	PRESERVE	1.8	56
57	HONEYLOCUST	20.0	7.0	GOOD	GOOD FORM	SOME DIEBACK IN CROWN	PRESERVE	1.8	57
58	HONEYLOCUST	25.0	7.0	GOOD	GOOD FORM	MINOR DIEBACK ON LOWER BRANCHES	PRESERVE	1.8	58
59	HONEYLOCUST	10.0	5.0	POOR	IRREGULAR FORM	STEM DECAY; DECLINING	REMOVE	1.8	59
60	HONEYLOCUST	14.0	5.0	POOR	IRREGULAR FORM	DECLINING	REMOVE	1.8	60
61	HONEYLOCUST	14.0	5.0	POOR	IRREGULAR FORM	DECLINING	REMOVE	1.8	61