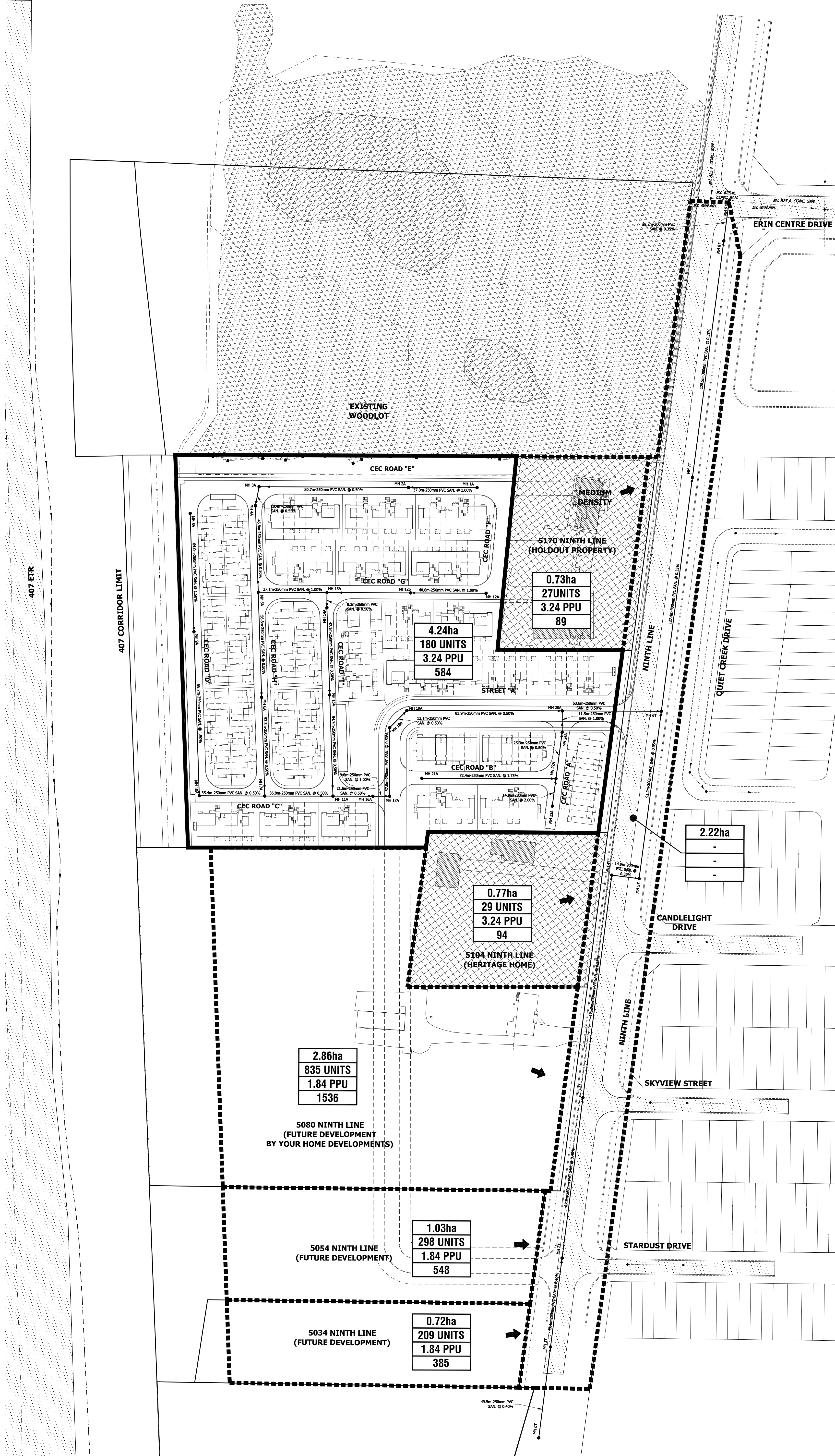


LEGEND

- PHASE 2 DEVELOPMENT (SUBJECT TO MTO TRANSITWAY CORRIDOR EA)
- HOLDOUT PROPERTY
- WOODLOT
- FUTURE SANITARY DRAINAGE DIRECTION
- SANITARY MANHOLE AND FLOW DIRECTION ARROW
- EXISTING SANITARY SEWER
- SANITARY DRAINAGE AREA BOUNDARY
- EXTERNAL SANITARY DRAINAGE AREA BOUNDARY

0.73ha	SANITARY DRAINAGE AREA (HECTARES)
27UNITS	NUMBER OF PROPOSED UNITS
3.24 PPU	DENSITY (PEOPLE PER UNIT)
89	POPULATION



2.86ha
835 UNITS
1.84 PPU
1536

5080 NINTH LINE
 (FUTURE DEVELOPMENT
 BY YOUR HOME DEVELOPMENTS)

1.03ha
298 UNITS
1.84 PPU
548

5054 NINTH LINE
 (FUTURE DEVELOPMENT)

0.72ha
209 UNITS
1.84 PPU
385

5034 NINTH LINE
 (FUTURE DEVELOPMENT)

4.24ha
180 UNITS
3.24 PPU
584

0.73ha
27UNITS
3.24 PPU
89

5170 NINTH LINE
 (HOLDOUT PROPERTY)

0.77ha
29 UNITS
3.24 PPU
94

5104 NINTH LINE
 (HERITAGE HOME)

2.22ha
 .
 .
 .

urbantech
 Urbantech Consulting, A Division of Leighton-Zec Ltd.
 3760 14th Avenue, Suite 301, Markham, Ontario L3R 3T7
 Tel: 905.946.9461 Fax: 905.946.9995
 www.urbantech.com

5150 NINTH LINE
MEDIUM DENSITY BLOCK

Region of Peel
Working for you

MISSISSAUGA

SANITARY DRAINAGE PLAN

PROJECT No.	DATE	SCALE	DWG No.
19-608	OCT. 2019	1:1000	6