

CITY OF MISSISSAUGA – PUBLIC INFORMATION CENTRE

Municipal Class Environmental Assessment Study: Applewood Creek Erosion Control Project – Lakeview Golf Course (Dixie Outlet Mall to CN Rail)

WHAT?

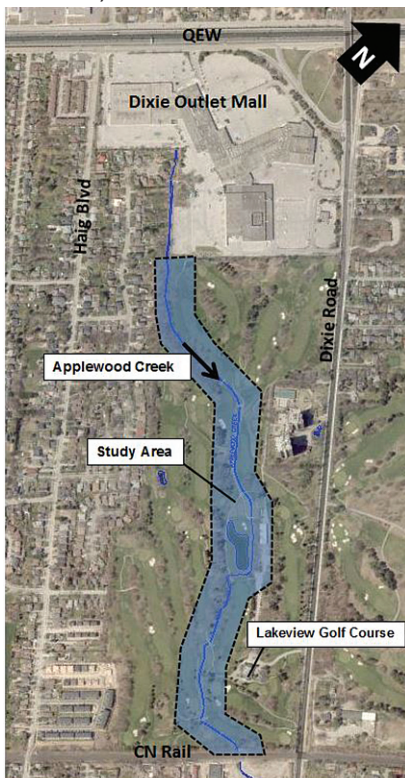
- The City of Mississauga is undertaking a Schedule B Class Environmental Assessment (Class EA) Study to control erosion and restore the section of Applewood Creek through the Lakeview Golf Course.

WHY?

- Through its ongoing erosion monitoring program, the City of Mississauga recognizes that this section of Applewood Creek is in need of rehabilitation to address existing erosion and safety issues.

HOW?

- The study is examining the creek and associated natural resources to identify existing erosion problems, potential future risks, and opportunities for restoration and environmental enhancement.
- Through the Class EA process, multiple alternative solutions are being evaluated by the Study Team and will be refined through public and agency consultation (see below). The Study Team will then select a Preferred Alternative and proceed with design of the recommended works.
- At the end of the study, a Project File, documenting the study process will be available for public review.



PUBLIC CONSULTATION

- Consultation is an important part of the Class EA process. Public input and comment are invited for incorporation into the planning and design of this project.
- A Public Information Centre (PIC) has been scheduled to present the study findings to date, review the alternative solutions being considered, and to answer any questions you may have. The location and date for the PIC are listed below:

DATE: Thursday November 7th, 2019

TIME: 4:00 pm to 7:00 pm

LOCATION: Lakeview Golf Course – Heritage Room
190 Dixie Road, Mississauga, Ontario, L5E 2P4

- The PIC will be an “open house” drop-in format with poster board displays illustrating the existing conditions of the study area, the problems, and conceptual designs of alternative solutions that are being considered, including potential impacts to the golf course.
- We invite you to share your input with City staff and the study consultants and designers who will be available to discuss the project and answer your questions.
- If you have any questions or comments regarding the study, require additional information, or wish to be added or removed from the study mailing list, please contact:

Greg Frew, P.Eng.

Project Manager

City of Mississauga

201 City Centre Dr., Suite 800

Mississauga, ON L5B 2T4

(905) 615-3200, ext. 3362

greg.frew@mississauga.ca

Robert Amos, P.Eng.

Consultant Project Manager

Aquafor Beech Ltd.

2600 Skymark Avenue, Unit 6-201

Mississauga, Ontario

(905) 629-0099, ext. 294

amos.r@aquaforb企业.com

This notice was issued October 24th, 2019.

The study is being undertaken in accordance with the planning and design process for Schedule 'B' projects, as outlined in the "Municipal Class Environmental Assessment" document (October 2000, amended in 2015), which is approved under the Ontario Environmental Assessment Act.

Personal information is collected under the authority of the Environmental Assessment Act and will be used in the assessment process. With exception of personal information, all comments shall become part of the public records. Questions about this collection should be directed to the Project Manager listed above.