

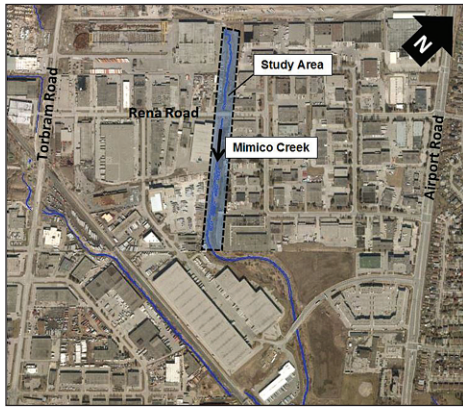
CITY OF MISSISSAUGA – NOTICE OF STUDY COMMENCEMENT

Municipal Class Environmental Assessment Study:

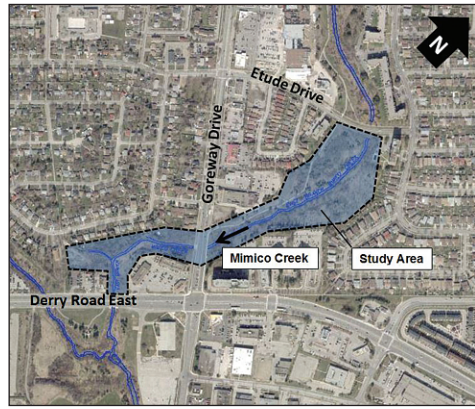
Mimico Creek Erosion Control Project- at Rena Road & Etude Dr. to Derry Rd. E.

WHAT?

- The City of Mississauga is undertaking a Schedule B Class Environmental Assessment (Class EA) Study for erosion control and restoration at two sites on Mimico Creek:



Mimico Creek at Rena Road



Mimico Creek from Etude Dr. to Derry Rd. E.

WHY?

- Through its ongoing erosion monitoring program, the City of Mississauga recognizes that these sections of Mimico Creek are in need of rehabilitation to address existing erosion issues.

HOW?

- The study will examine the creek and associated natural resources to identify existing erosion problems, potential future risks, and opportunities for restoration and environmental enhancement.
- Through the Class EA process, multiple alternative solutions will be developed and evaluated by the Study Team and refined through public and agency consultation (see below). The Study Team will then select a Preferred Alternative and proceed with design of the recommended works.
- At the end of the study, a Project File, documenting the study process will be available for public review.

GET INVOLVED!

- Consultation is an important part of the Class EA process. Public input and comment are invited, for incorporation into the planning and design of this project.
- A Public Information Centre (PIC) will be held to present the study findings, the alternative solutions being considered, and to answer any questions you may have. Details regarding the PIC will be advertised publicly as the study progresses.
- If you have any questions or comments regarding the study, wish to provide input on the proposed solutions, or wish to be added or removed from the study mailing list, please contact:

Greg Frew, P.Eng.

Project Manager

City of Mississauga

201 City Centre Dr,

Suite 800

Mississauga, ON L5B 2T4

(905) 615-3200, ext. 3362

greg.frew@mississauga.ca

Brian Bishop, P.Eng.

Consultant Project Manager

Wood Environment &

Infrastructure Solutions

3450 Harvester Road, Suite 100

Burlington, ON L7N 3W5

(905)335-2353

brian.bishop@woodplc.com

This notice was issued October 24th, 2019.

This notice signals the commencement of the Class EA, a study which will define the problem, identify/evaluate alternative solutions, and determine a preferred design in consultation with regulatory agencies and the public. The study is being undertaken in accordance with the planning and design process for Schedule 'B' projects, as outlined in the "Municipal Class Environmental Assessment" document (October 2000, amended in 2015), which is approved under the Ontario Environmental Assessment Act.

Personal information is collected under the authority of the Environmental Assessment Act and will be used in the assessment process. With exception of personal information, all comments shall become part of the public records. Questions about this collection should be directed to the Project Manager listed above.