

CITY OF MISSISSAUGA – PUBLIC INFORMATION CENTRE: Southdown District Stormwater Servicing and Environmental Management Plan

WHAT?

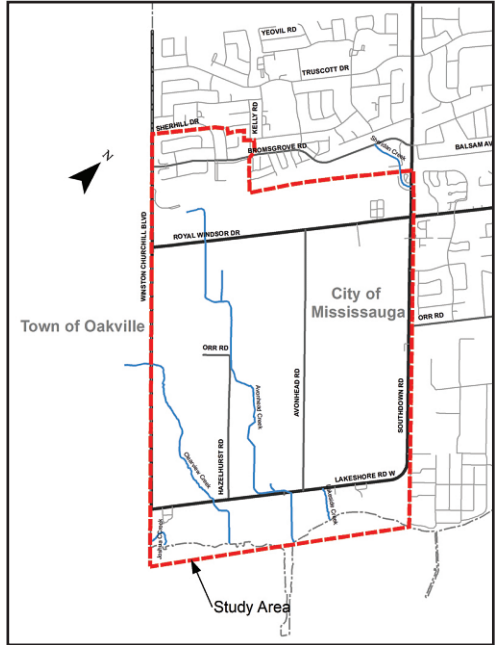
The City of Mississauga is developing a stormwater servicing and environmental management plan that will protect, maintain and enhance the existing streams, groundwater, and natural environmental resources of the Southdown study area as future urban development and re-development takes place.

The study is being conducted in accordance with the Municipal Class Environmental Assessment (EA) process, following a Master Plan approach.

WHY?

The stormwater drainage system in the Southdown area was last investigated in 2000 as part of the “Southdown Master Drainage Plan”. Since that time, stormwater management criteria and standard practices have evolved, and there have been considerable changes to the local, regional and provincial policies.

For that reason, the City is conducting a new study to establish updated stormwater management requirements to minimize flooding, erosion, water quality degradation and water balance impacts from urban development, and to identify stream restoration opportunities within the existing drainage system.



HOW?

The study will:

- Examine the stormwater drainage system within the study area, including the existing creeks, storm sewers, bridges, and culverts;
- Identify drainage deficiencies and provide direction on future infrastructure needs to meet City of Mississauga standards under the current and future conditions;
- Identify stormwater management facility requirements and associated targets/criteria to treat stormwater runoff from future urban development areas;
- Provide recommendations with respect to stormwater management, ecological restoration/enhancement opportunities within the study area watersheds;

Through the Municipal Class EA process, multiple alternative solutions will be developed and evaluated by the Study Team and refined through public and agency consultation (see below). The Study Team will then select a Preferred Alternative to identify future recommended works.

At the end of the study, a Project File, documenting the study process will be available for public review.

Public Consultation

Consultation is an important part of the EA process. Public input and comment are invited for incorporation into the planning and design of this project.

Two Public Information Centres (PICs) will be held to present the study findings, the alternative solutions being considered, and to answer any questions you may have. The first PIC is scheduled for **Tuesday June 11, 2019** to provide members of the public with an opportunity to meet the project team, review the study background, existing conditions, problems and opportunities, alternative solutions, and next steps in the study. The PIC will be held as follows:

DATE: 11 June, 2019
TIME: 6:00 pm to 8:00 pm
LOCATION: Clarkson Community Centre, Lower Lobby
 2475 Truscott Dr.

The PIC will be an “open house” drop-in format with poster board displays illustrating the existing conditions of the study area, the problems, and optional solutions that are being considered. City staff and the study consultant will be available to discuss the project and answer questions.

If you have any questions or comments regarding the study, require additional information, or wish to be added or removed from the study mailing list, please contact:

Greg Frew, P.Eng.
Project Manager
 City of Mississauga
 201 City Centre Dr., Suite 800
 Mississauga, ON L5B 2T4
 (905) 615-3200, ext. 3362
greg.frew@mississauga.ca

Steve Hollingworth, P.Eng.
Consultant Project Manager
 The Municipal Infrastructure Group
 8800 Dufferin St., Suite 200
 Vaughan, ON L4K 0C5
 (905) 738-5700, ext. 359
shollingworth@tmig.ca