

# CITY OF MISSISSAUGA – NOTICE OF STUDY COMMENCEMENT: Southdown District Stormwater Servicing and Environmental Management Plan

## WHAT?

The City of Mississauga is developing a stormwater servicing and environmental management plan that will protect, maintain and enhance the existing streams, groundwater, and natural environmental resources of the Southdown study area as future urban development and re-development takes place.

The study is being conducted in accordance with the Municipal Class Environmental Assessment (EA) process, following a Master Plan approach.

## WHY?

The stormwater drainage system in the Southdown area was last investigated in 2000 as part of the “Southdown Master Drainage Plan”. Since that time, stormwater management criteria and standard practices have evolved, and there have been considerable changes to the local, regional and provincial policies.

For that reason, the City is conducting a new study to establish updated stormwater management requirements to minimize flooding, erosion, water quality degradation and water balance impacts from urban development, and to identify stream restoration opportunities within the existing drainage system.

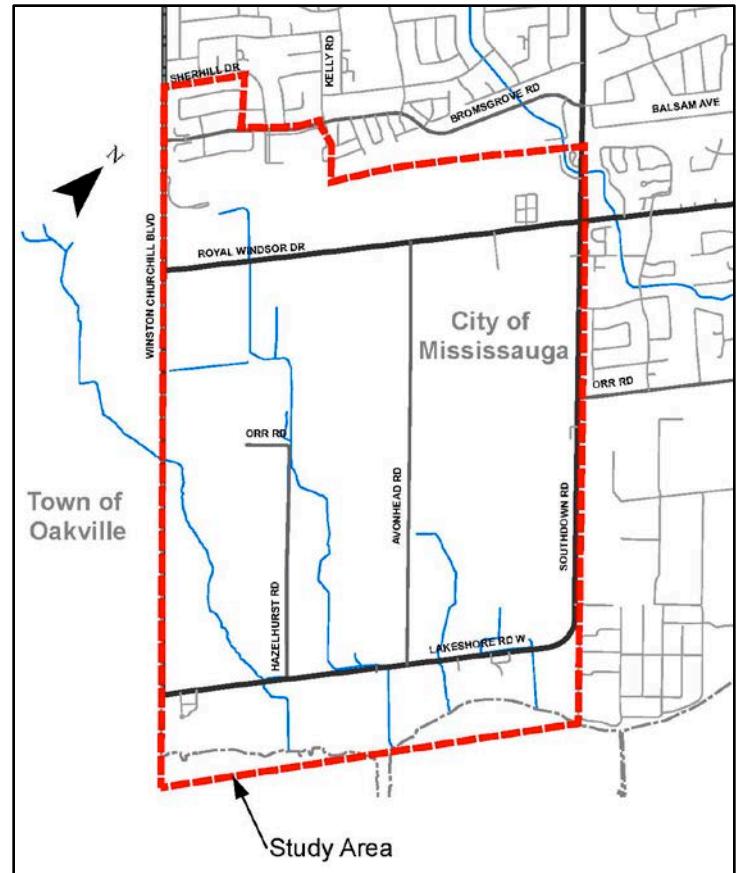
## HOW?

The study will:

- examine the stormwater drainage system within the study area, including the existing creeks, storm sewers, bridges, and culverts;
- identify drainage deficiencies and provide direction on future infrastructure needs to meet City of Mississauga standards under the current and future conditions;
- Identify stormwater management facility requirements and associated targets/criteria to treat stormwater runoff from future urban development areas;
- Provide recommendations with respect to stormwater management, ecological restoration/enhancement opportunities within the study area watersheds;

Through the Municipal Class EA process, multiple alternative solutions will be developed and evaluated by the Study Team and refined through public and agency consultation (see below). The Study Team will then select a Preferred Alternative to identify future recommended works.

At the end of the study, a Project File, documenting the study process will be available for public review.



## GET INVOLVED!

Consultation is an important part of the EA process. Public input and comment are invited for incorporation into the planning and design of this project.

Two Public Information Centres (PICs) will be held to present the study findings, the alternative solutions being considered, and to answer any questions you may have. Details regarding these upcoming PICs will be advertised publicly as the study progresses.

If you have any questions or comments regarding the study, wish to provide input on the proposed solutions, or wish to be added or removed from the study mailing list, please contact:

**Greg Frew, P.Eng.**  
Project Manager  
City of Mississauga  
201 City Centre Dr., Suite 800  
Mississauga, ON L5B 2T4  
(905) 615-3200, ext. 3362  
[greg.frew@mississauga.ca](mailto:greg.frew@mississauga.ca)

**Steve Hollingworth, P.Eng.**  
Consultant Project Manager  
The Municipal Infrastructure Group  
8800 Dufferin St., Suite 200  
Vaughan, ON L4K 0C5  
(905) 738-5700, ext. 359  
[shollingworth@tmig.ca](mailto:shollingworth@tmig.ca)

This notice signals the commencement of the Class EA, a study which will define the problem, identify/evaluate alternative solutions, and determine a preferred solution in consultation with regulatory agencies and the public. The study is being undertaken as a Master Plan, as outlined in the “Municipal Class Environmental Assessment” document (October 2000, amended in 2007, 2011, and 2015), which is approved under the Ontario *Environmental Assessment Act*.

Personal information is collected under the authority of the Environmental Assessment Act and will be used in the assessment process. With exception of personal information, all comments shall become part of the public records. Questions about this collection should be directed to the Project Manager listed above.