



Chris Reed . Stoss landscape Urbanism

Mark Sterling . Sweeny Sterling Finlayson &Co. Architects, Inc.

Inspiration Port Credit |

Mark Sterling . Sweeny Sterling Finlayson &Co. Architects, Inc.

Green Development

Sustainable Community Planning

Transit Oriented Corridor Urban Design / Complete Streets

Mark Sterling . Sweeny Sterling Finlayson &Co. Architects, Inc.

Green Development

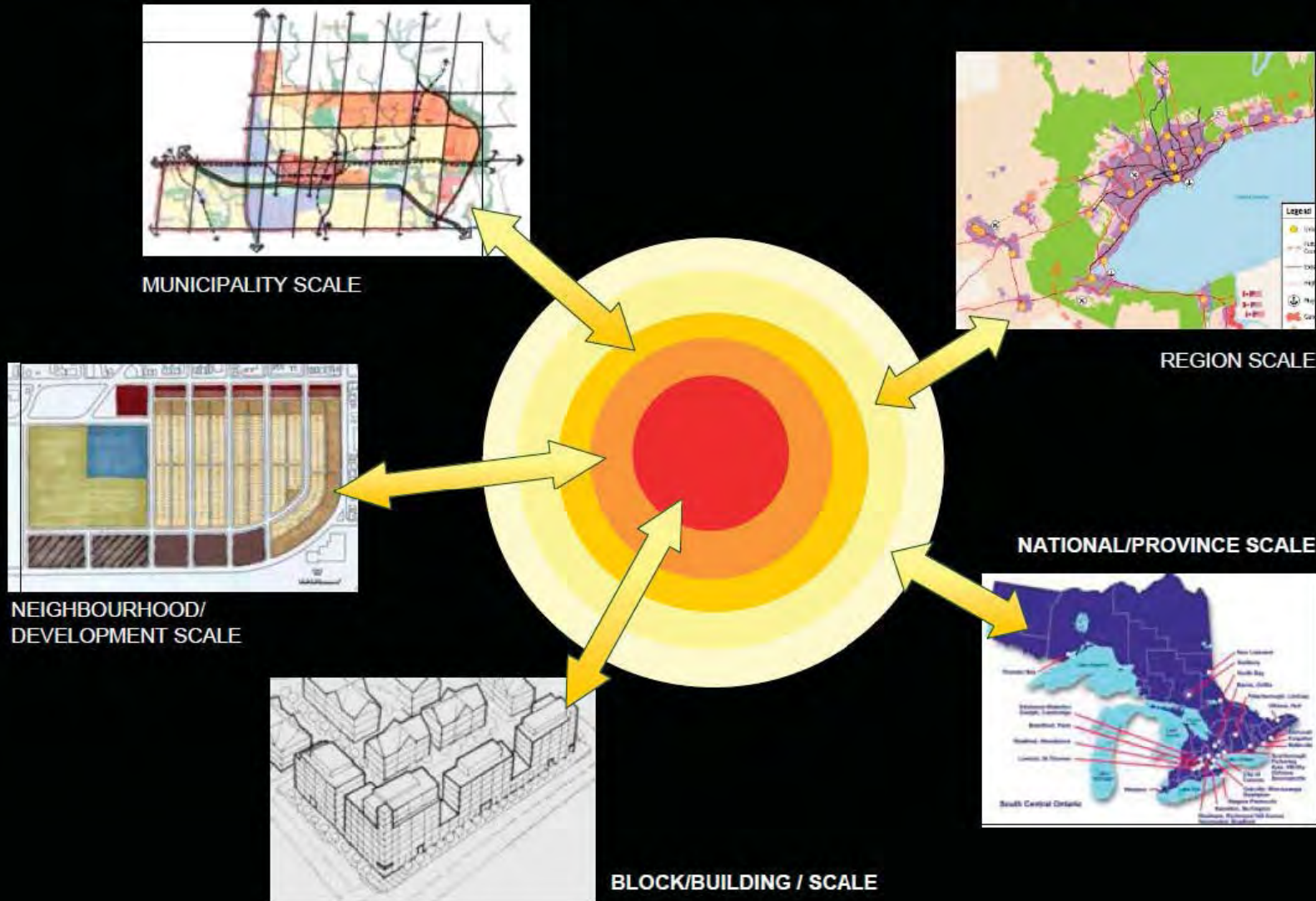
What Is Green Development?

Neighbourhood Scale

Streets and Blocks Scale

Site and Building Scale

Scales of Sustainability



What is Green Development?

Port Credit . Mississauga . Canada . 2012

Mark Sterling . Sweeny Sterling Finlayson &Co. Architects, Inc.

Green Development

What Is Green Development?

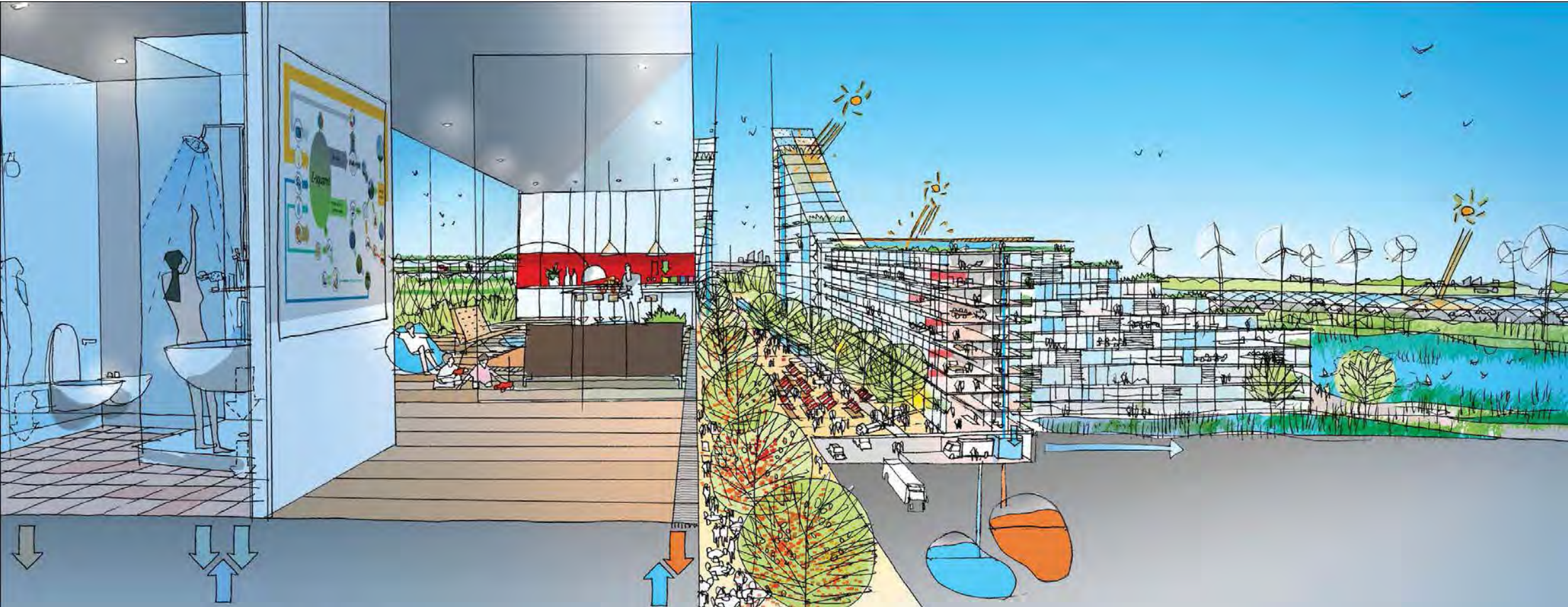
Neighbourhood Scale

Streets and Blocks Scale

Site and Building Scale

What kinds of features to build into a neighbourhood plan?

Density and Mixed Use



Neighbourhood Scale

Port Credit . Mississauga . Canada . 2012

What kinds of features to build into a neighbourhood plan?

Pedestrian Environment



Neighbourhood Scale

Port Credit . Mississauga . Canada . 2012

What kinds of features to build into a neighbourhood plan?

Cycling Environment



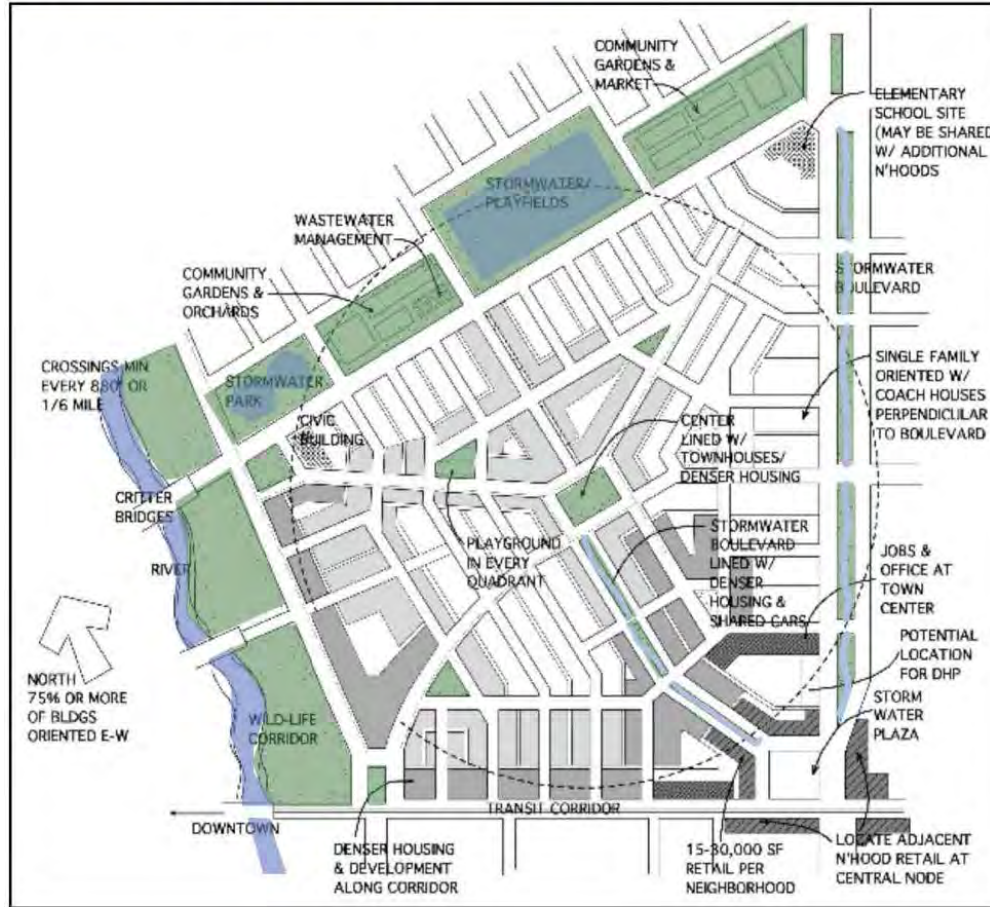
Neighbourhood Scale

Port Credit . Mississauga . Canada . 2012

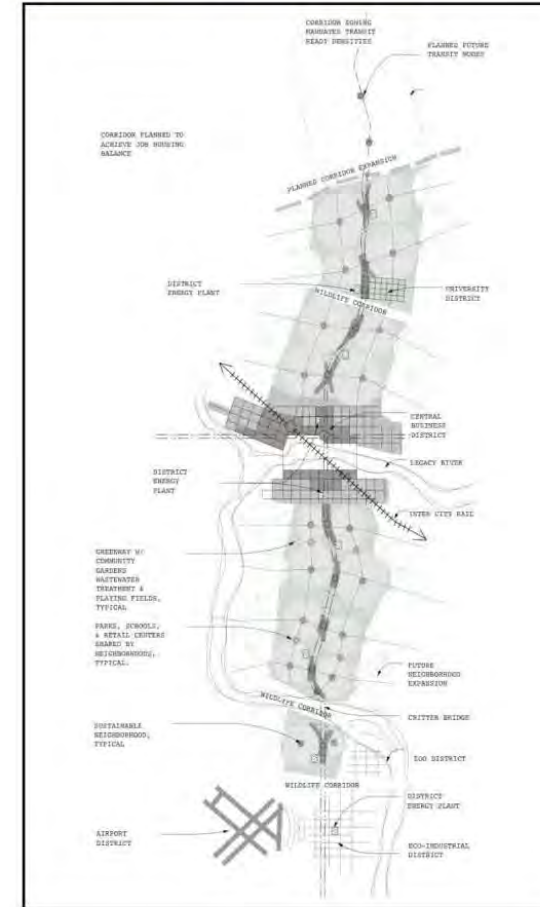
What kinds of features to build into a neighbourhood plan?

Support for Transit

Walking in the neighborhood



Transit in the corridor



What kinds of features to build into a neighbourhood plan?

Parking Management



Neighbourhood Scale

Port Credit . Mississauga . Canada . 2012

What kinds of features to build into a neighbourhood plan?

Transit Integration



What kinds of features to build into a neighbourhood plan?

Green Networks



Neighbourhood Scale

Port Credit . Mississauga . Canada . 2012

What kinds of features to build into a neighbourhood plan?

Public Space



Mark Sterling . Sweeny Sterling Finlayson &Co. Architects, Inc.

Green Development

What Is Green Development?

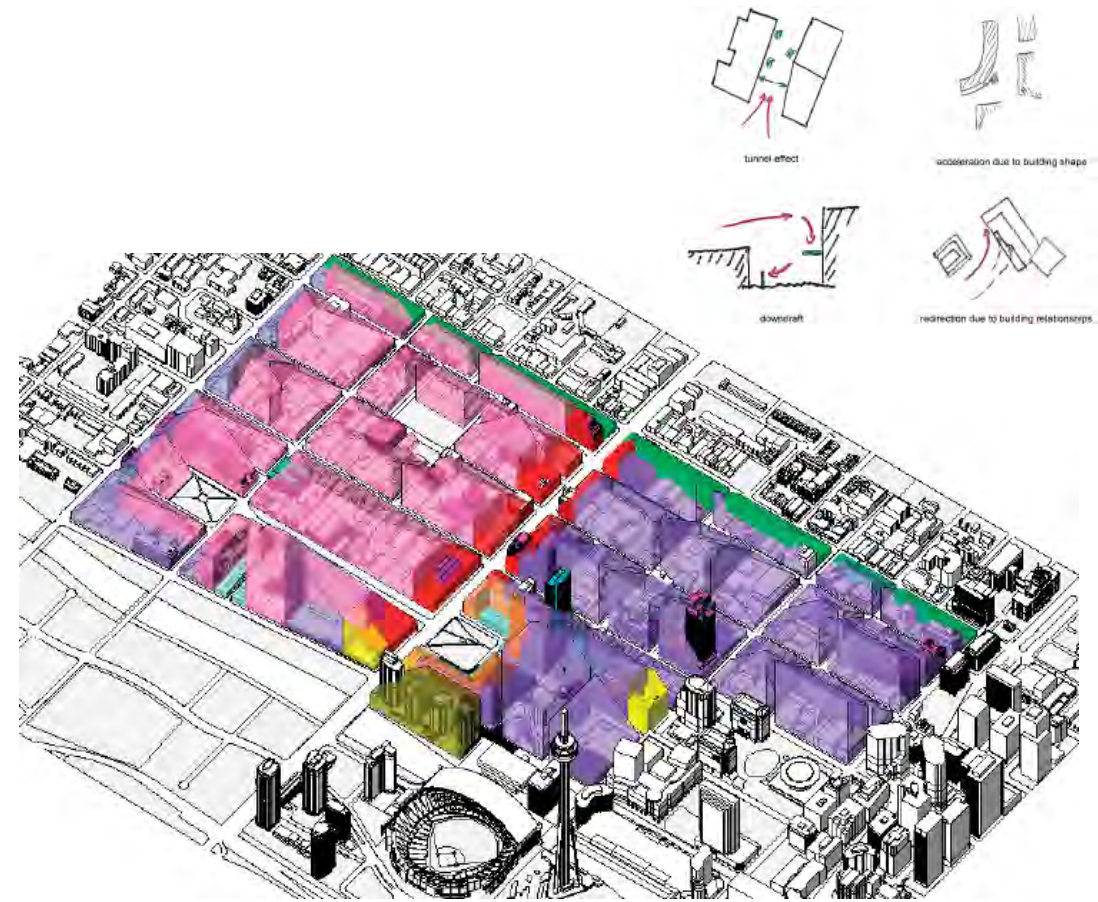
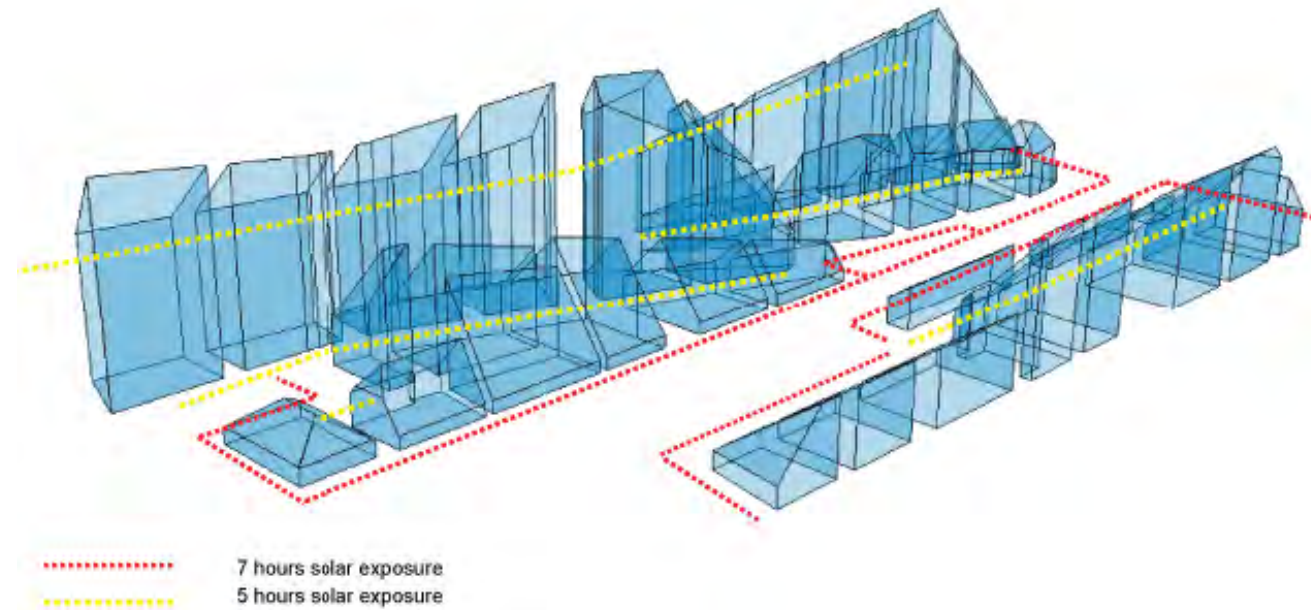
Neighbourhood Scale

Streets and Blocks Scale

Site and Building Scale

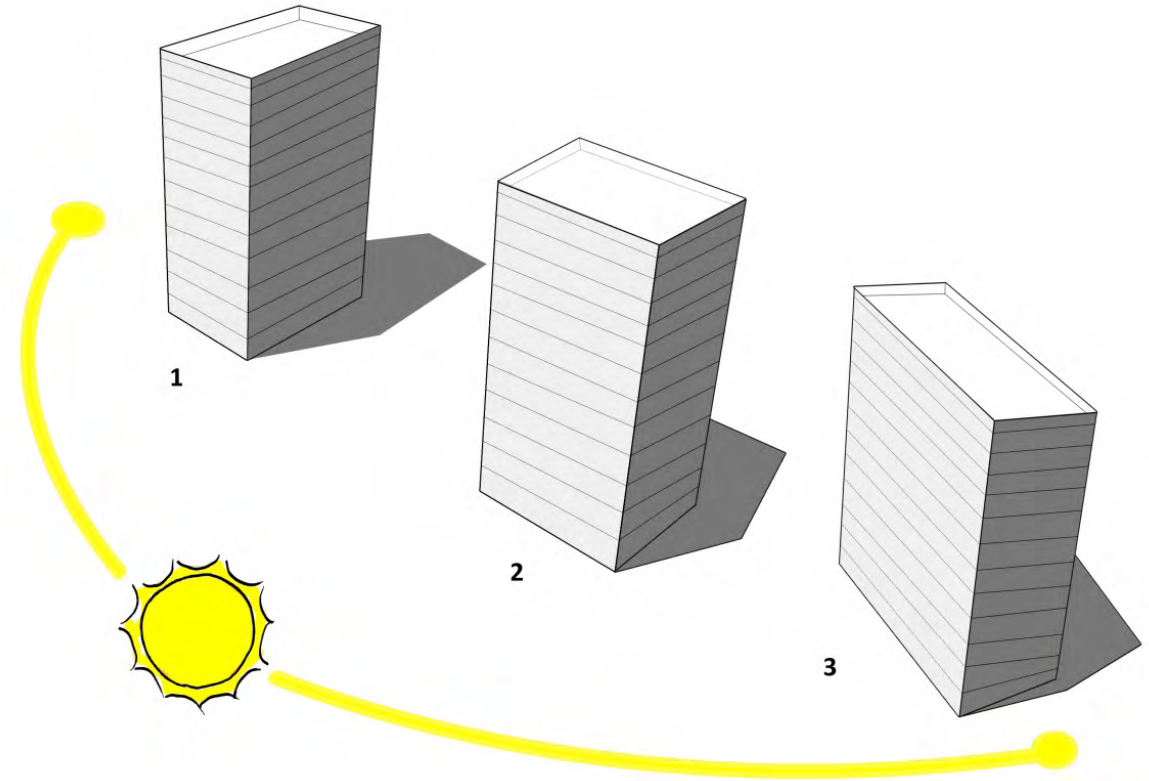
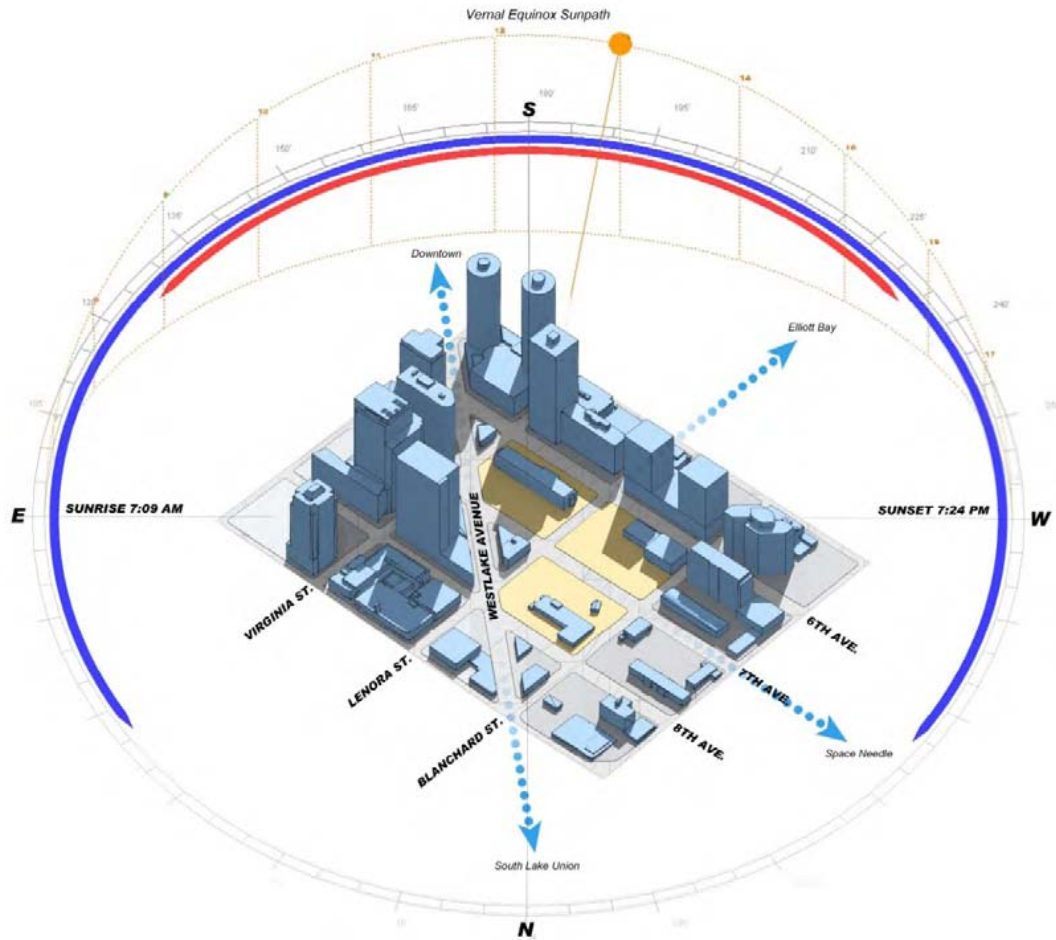
What about streets and blocks?

Block Scale: Protecting pedestrian comfort on key streets



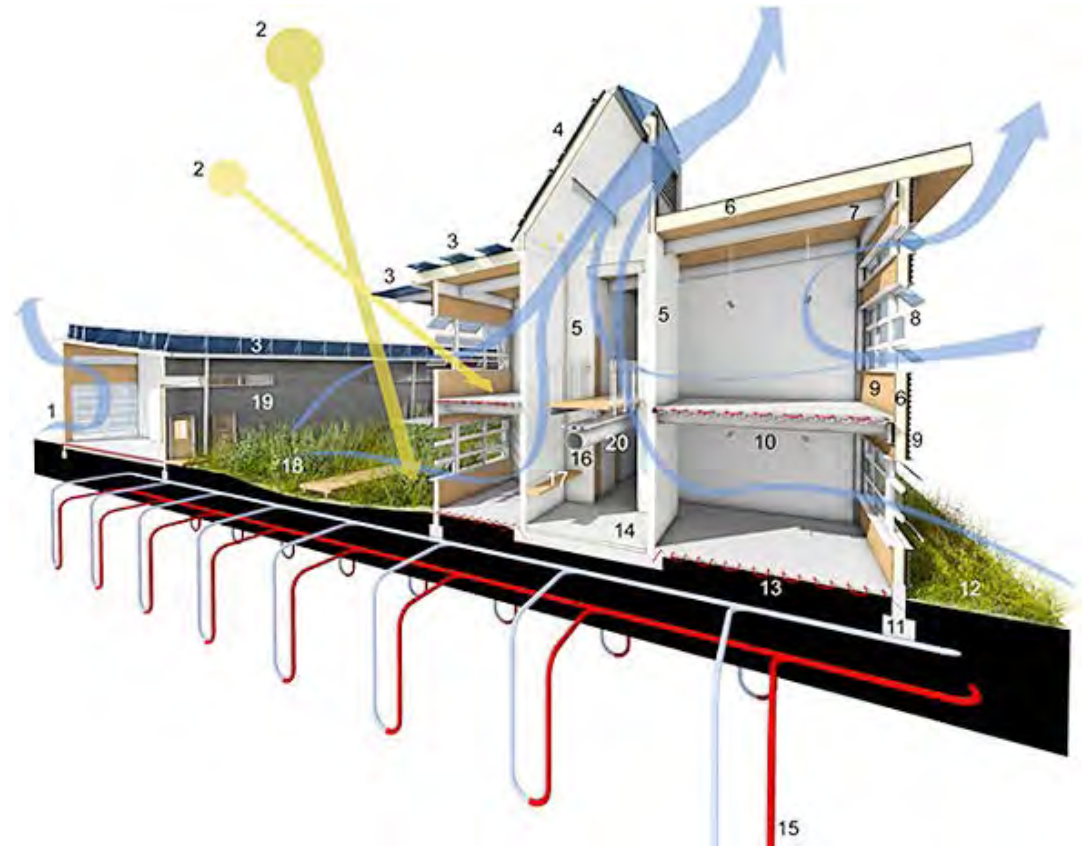
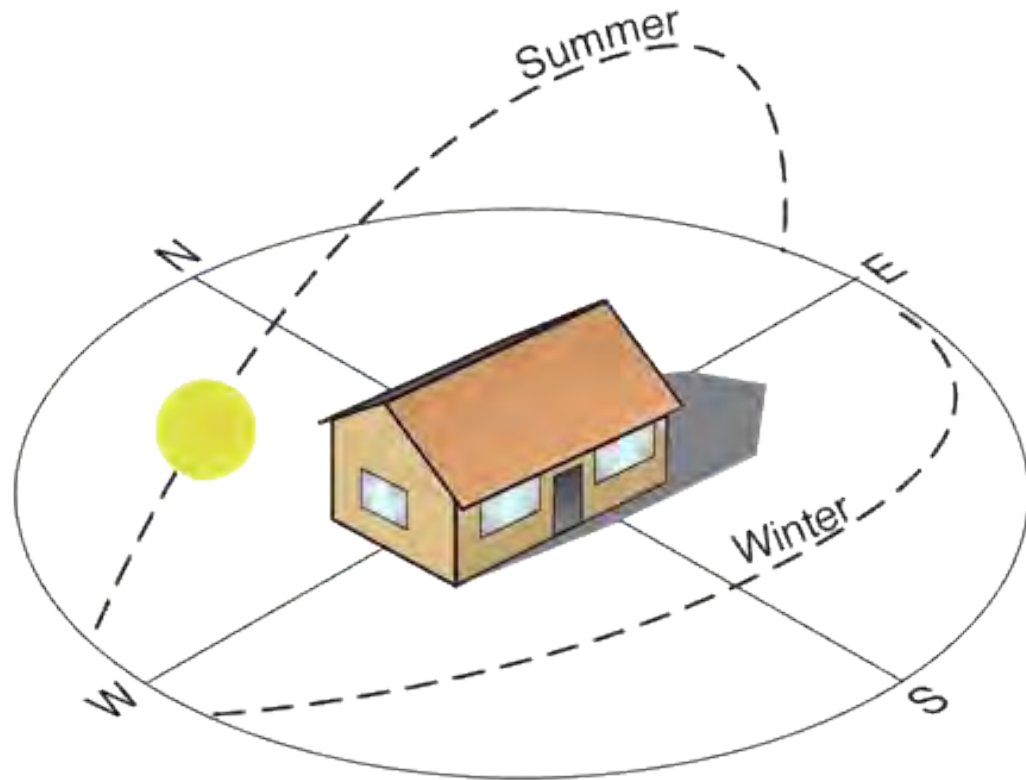
What about streets and blocks?

Block Scale: Solar Orientation and Screening



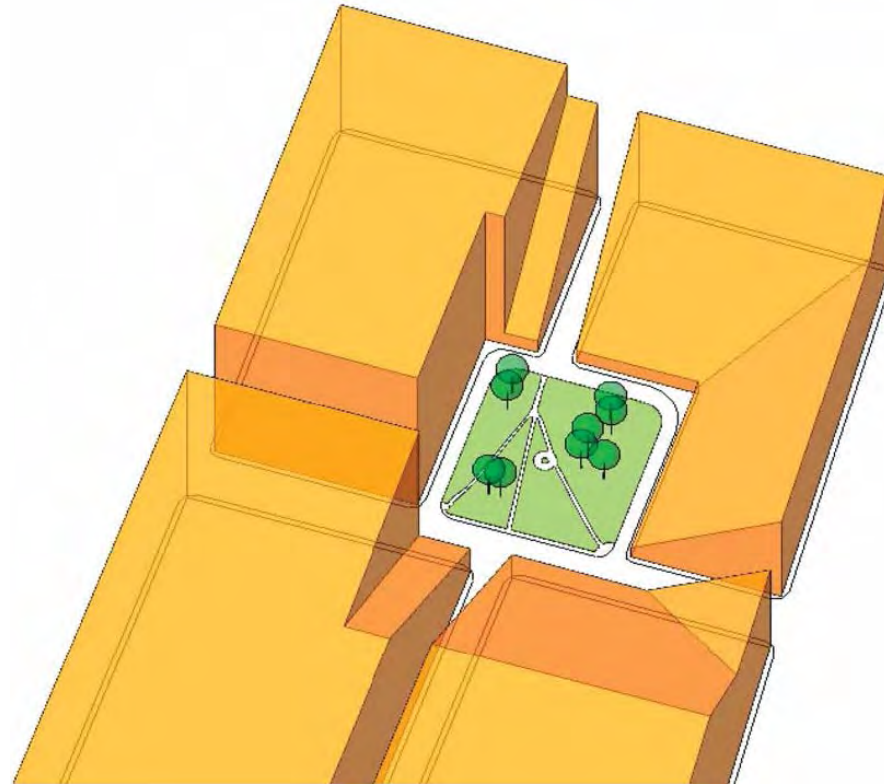
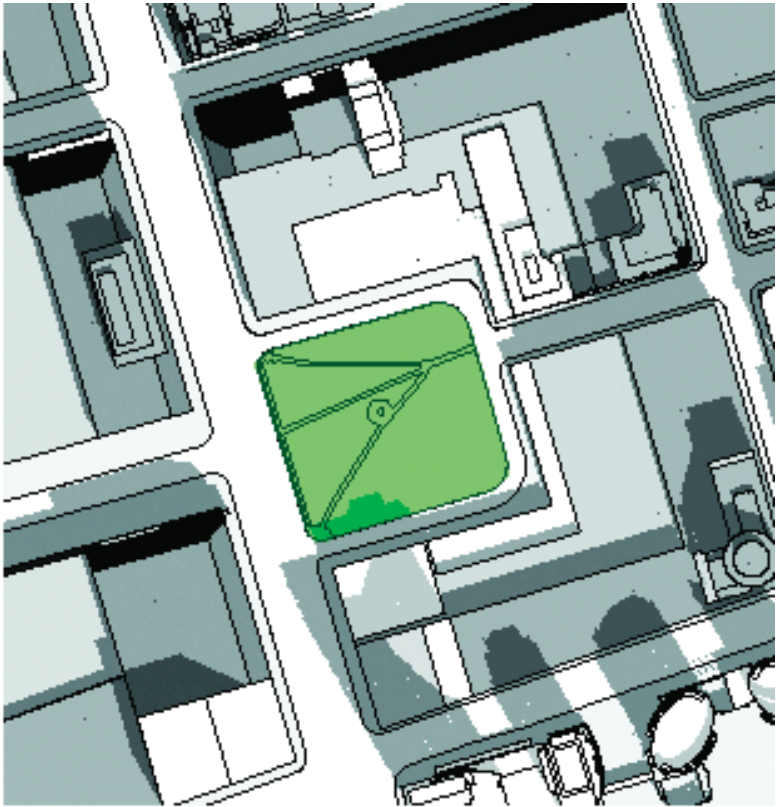
What about streets and blocks?

Block Scale: Solar Orientation and Screening

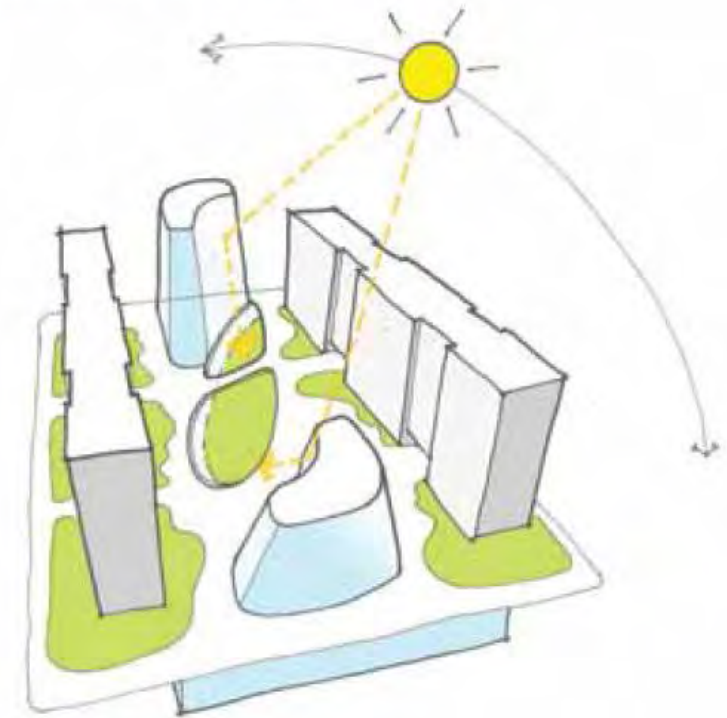


What about streets and blocks?

Block Scale: Sunlight standards for key parks and open spaces



Fine tune for light and air



Street Blocks and Scale

Port Credit . Mississauga . Canada . 2012

Mark Sterling . Sweeny Sterling Finlayson &Co. Architects, Inc.

Green Development

What Is Green Development?

Neighbourhood Scale

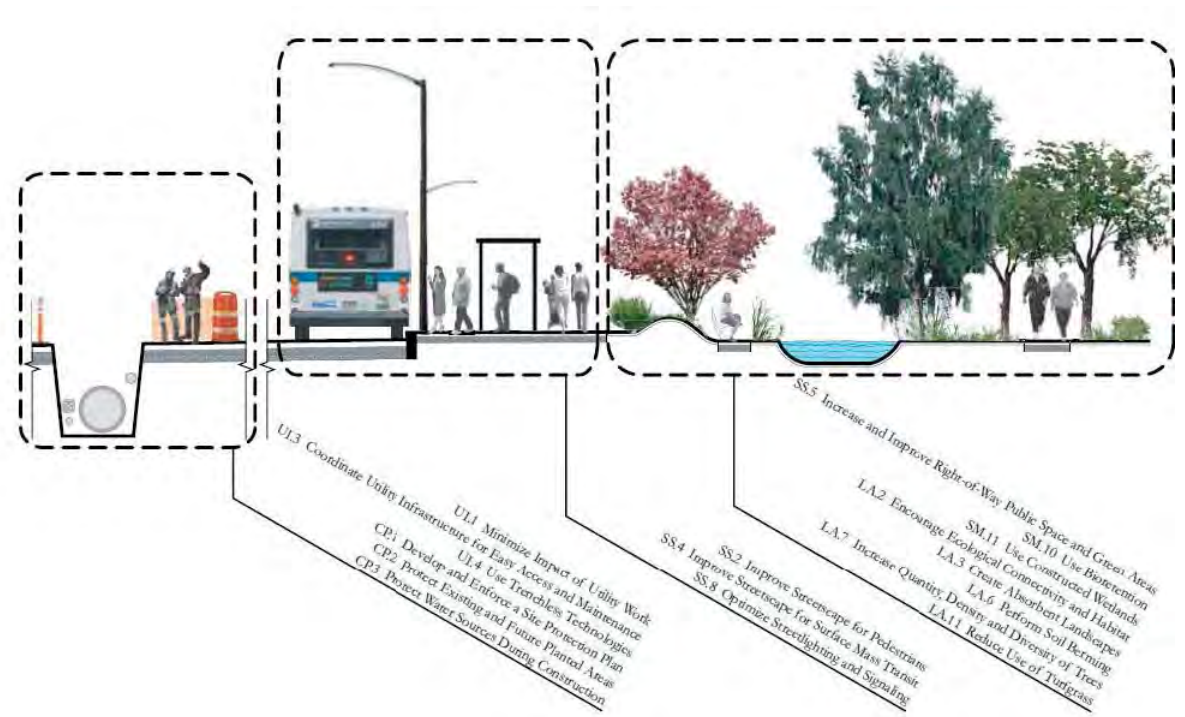
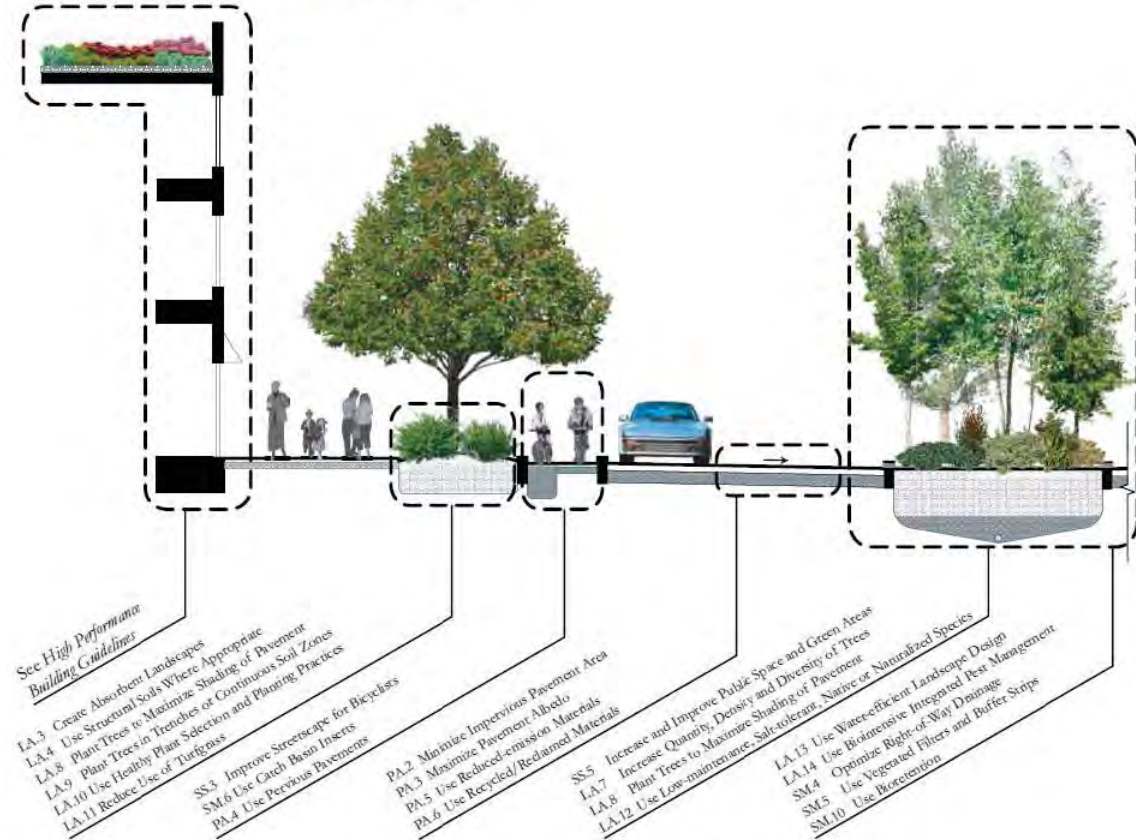
Streets and Blocks Scale

Site and Building Scale

What about the individual buildings?

Site Scale: Water Management

INTEGRATION OF BEST MANAGEMENT PRACTICES



Site and Building Scale

Port Credit . Mississauga . Canada . 2012

What about the individual buildings?

Building Scale: Green Roofs and Water Management



Site and Building Scale

Port Credit . Mississauga . Canada . 2012

What about the individual buildings?

Building Scale: Using Wind Power



Site and Building Scale

Port Credit . Mississauga . Canada . 2012

What about the individual buildings?

Details, Details

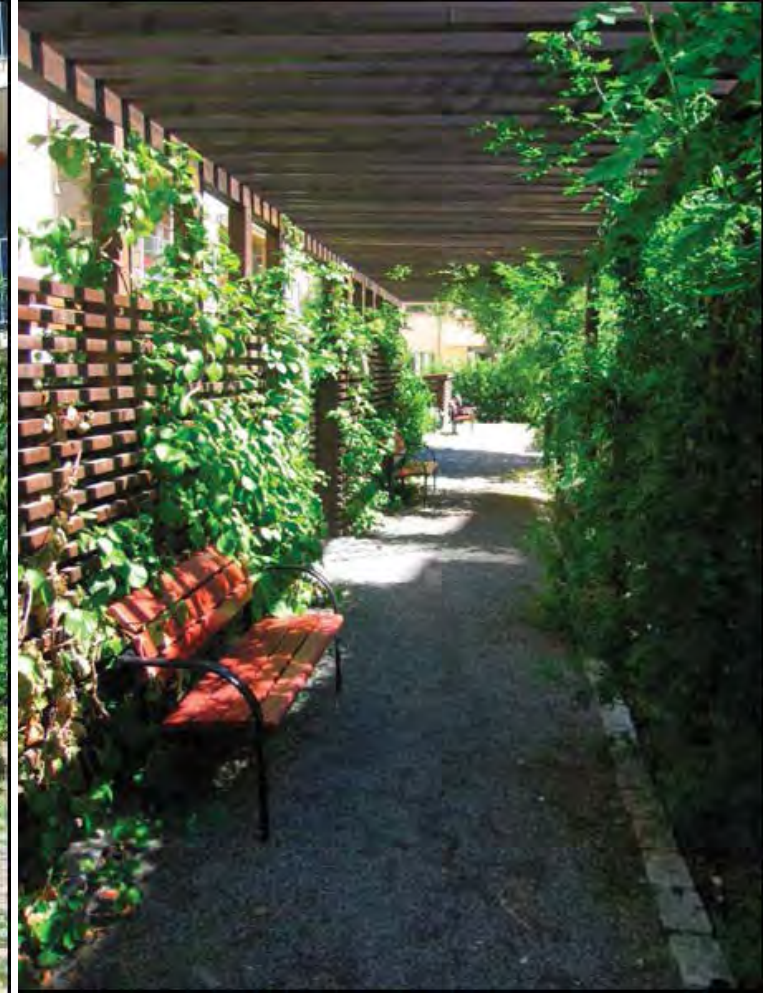


Site and Building Scale

Port Credit . Mississauga . Canada . 2012

What about the individual buildings?

Details, Details



Site and Building Scale

Port Credit . Mississauga . Canada . 2012

Mark Sterling . Sweeny Sterling Finlayson &Co. Architects, Inc.

Sustainable Community Planning

Amsterdam – KNSM/Java/Borneo/Ijburg

Stockholm – Hammarby Sjostad

Victoria – Dockside Green

West Don Lands Neighbourhood, Toronto (&Co)



KNSM / Java / Borneo-Sporenburg / Ijburg
Amsterdam . Netherlands. Various Departments and Designers. Ongoing (Ijburg)



KNSM / Java / Borneo-Sporenburg / Ijburg

Amsterdam . Netherlands. Various Departments and Designers. Ongoing (Ijburg)



KNSM / Java / Borneo-Sporenburg / Ijburg

Amsterdam . Netherlands. Various Departments and Designers. Ongoing (Ijburg)



KNSM / Java / Borneo-Sporenburg / Ijburg |
Amsterdam . Netherlands. Various Departments and Designers. Ongoing (Ijburg)

Mark Sterling . Sweeny Sterling Finlayson &Co. Architects, Inc.

Sustainable Community Planning

Amsterdam – KNSM/Java/Borneo/Ijburg

Stockholm – Hammarby Sjostad

Victoria – Dockside Green

West Don Lands Neighbourhood, Toronto (&Co)



Hammarby Sjöstad

Stockholm . Sweden . City Planning Bureau . 2004



Hammarby Sjostad
Stockholm . Sweden . City Planning Bureau



Hammarby Sjostad
Stockholm . Sweden . City Planning Bureau



Mark Sterling . Sweeny Sterling Finlayson &Co. Architects, Inc.

Sustainable Community Planning

Amsterdam – KNSM/Java/Borneo/Ijburg

Stockholm – Hammarby Sjostad

Victoria – Dockside Green

West Don Lands Neighbourhood, Toronto (&Co)



Dockside Green

Victoria . Canada . Busby – Perkins & Will. Ongoing



Dockside Green
Victoria . Canada . Busby – Perkins & Will



Dockside Green
Victoria . Canada . Busby – Perkins & Will



Dockside Green
Victoria . Canada . Busby – Perkins & Will

Mark Sterling . Sweeny Sterling Finlayson &Co. Architects, Inc.

Sustainable Community Planning

Amsterdam – KNSM/Java/Borneo/Ijburg

Stockholm – Hammarby Sjostad

Victoria – Dockside Green

West Don Lands Neighbourhood, Toronto (&Co)



West Don Lands |
Toronto . Canada . Various Designers, &Co

Mark Sterling . Sweeny Sterling Finlayson &Co. Architects, Inc.

Transit Oriented Corridor Urban Design / Complete Streets

TCAT Complete Streets Study (&Co)

Mississauga New Official Plan (&Co)

Dundas West BIA Urban Design Study, Toronto (&Co)

Lake Shore Boulevard, Long Branch (&Co)



TCAT Complete Streets Study
Toronto . Canada . &Co. 2011



TCAT Complete Streets Study

Toronto . Canada . &Co



TCAAT Complete Streets Study

Toronto . Canada . &Co

Mark Sterling . Sweeny Sterling Finlayson &Co. Architects, Inc.

Transit Oriented Corridor Urban Design / Complete Streets

TCAT Complete Streets Study (&Co)

Mississauga New Official Plan (&Co)

Dundas West BIA Urban Design Study, Toronto (&Co)

Lake Shore Boulevard, Long Branch (&Co)



New Official Plan |
Mississauga . Canada . &Co. Ongoing



New Official Plan

Mississauga . Canada . &Co.



New Official Plan

Mississauga . Canada . &Co.

Mark Sterling . Sweeny Sterling Finlayson &Co. Architects, Inc.

Transit Oriented Corridor Urban Design / Complete Streets

TCAT Complete Streets Study (&Co)

Mississauga New Official Plan (&Co)

Dundas West BIA Urban Design Study, Toronto (&Co)

Lake Shore Boulevard, Long Branch (&Co)



Dundas West BIA Urban Design Study



Dundas West Business Improvement Area
Sweeny Sterling Finlayson & Co Architects Inc.

December, 2010

Dundas West BIA Urban Design Study

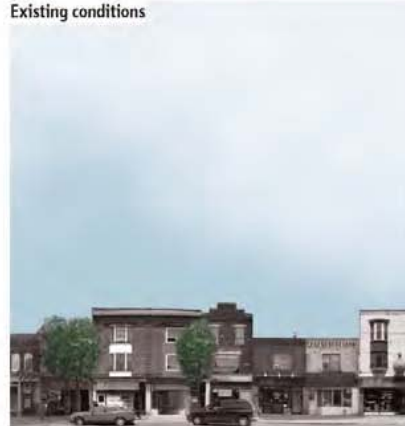
Toronto . Canada . & Co . 2010



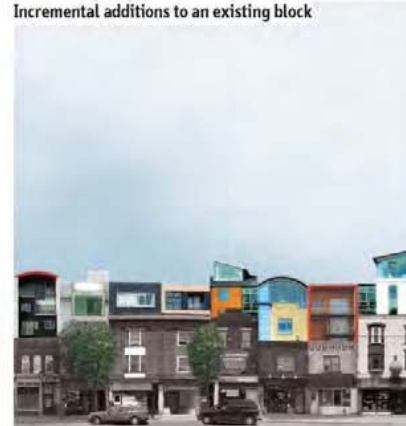
Site 6 Today



Site 6 illustrating Proposed Alternative Solution



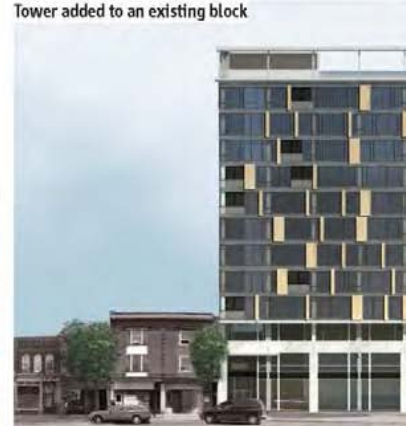
Existing conditions



Incremental additions to an existing block



Mid-rise replacement to an existing block



Tower added to an existing block

7.1.1 Incremental additions to an existing block

- * No, looks really cheap & junky
- * Depends on it's done. The current picture does not look like it matches with old buildings well
- * I like the intent of this – to avoid the stretch looking monotonous.

7.1.2 Mid-rise replacement to an existing block

- * Yes, increase the density but keep things to scale. Eg. 6 storey beside 3 story rather than 10 storey, etc
- * Where is Dundas West?
- * Replacement need it here
- * No, would rather the Tower or no change
- * My business couldn't afford the rent

7.1.3 Tower added to an existing block

- * Yes, In some places this could work
- * Yes, if it has retail on the main/ground floor
- * Only on selected sites, but am not opposed to this.
- * Yes, if we save some of the older shops

Mark Sterling . Sweeny Sterling Finlayson &Co. Architects, Inc.

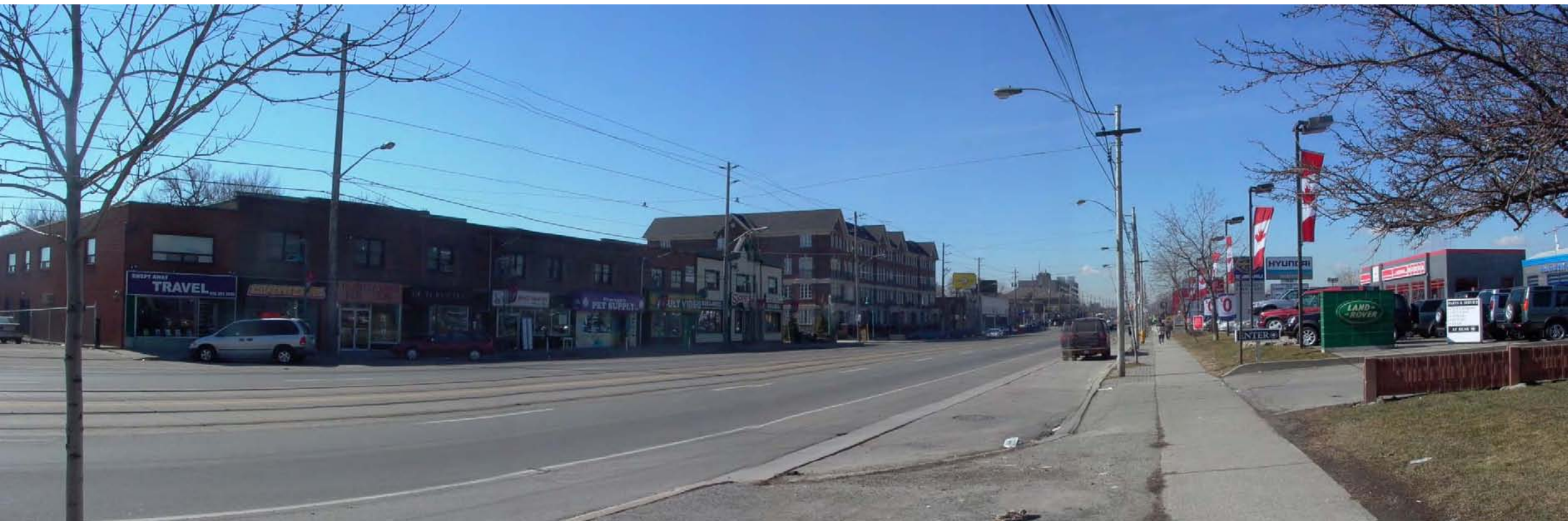
Transit Oriented Corridor Urban Design / Complete Streets

TCAT Complete Streets Study (&Co)

Mississauga New Official Plan (&Co)

Dundas West BIA Urban Design Study, Toronto (&Co)

Lake Shore Boulevard, Long Branch (&Co)



Lake Shore Boulevard Avenue Study

Toronto (Long Branch) . Canada . &Co . 2006



Lake Shore Boulevard Avenue Study

Toronto (Long Branch) . Canada . &Co



Lake Shore Boulevard Avenue Study

Toronto (Long Branch) . Canada . &Co



Lake Shore Boulevard Avenue Study

Toronto (Long Branch) . Canada . &Co